



Analysis of the day-ahead market and the intraday market operating for August 2022

*Market Surveillance Department
Surveillance division
09.09.2022*

THE MAIN INDICATORS OF DAM AND IDM



The main indicators of DAM and IDM for August 2022

DAY-AHEAD MARKET

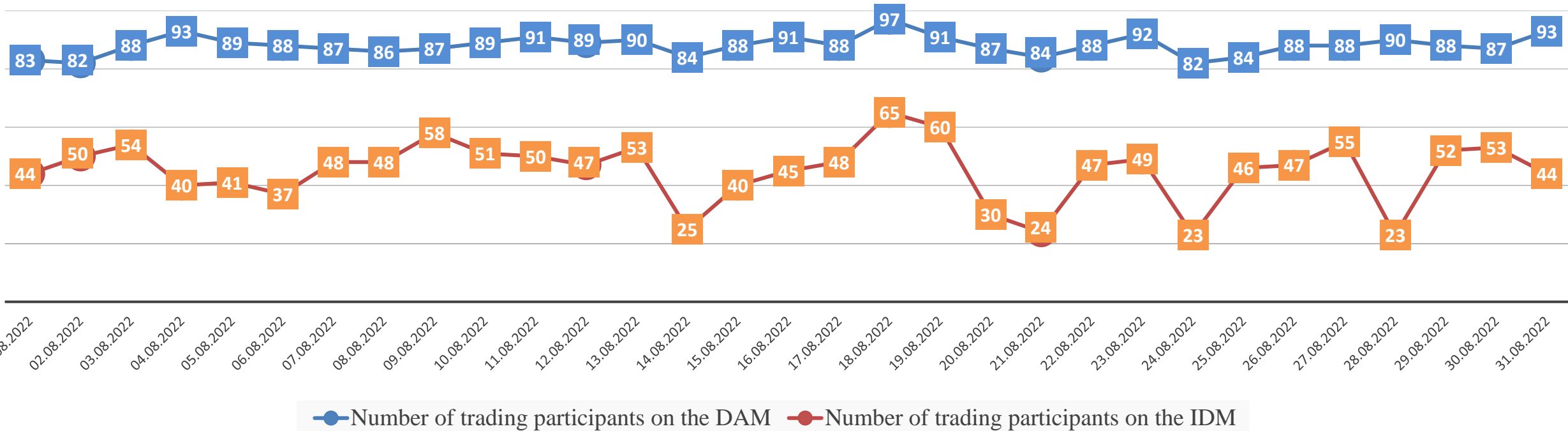
Indicator	August 2022	July 2022	Change, %	August 2021	Change, %
Base index (IPS), UAH/MWh	2 864,08	2 554,71	↑ + 12,11%	1 958,64	↑ + 46,23%
Peak index (IPS), UAH/MWh	3 157,95	2 782,25	↑ + 13,50%	2 181,46	↑ + 44,76%
Off-peak index (IPS), UAH/MWh	2 570,22	2 327,18	↑ + 10,44%	1 735,83	↑ + 48,07%
Base index (BEI), UAH/MWh	-	-	-	1 655,62	-
Peak index (BEI), UAH/MWh	-	-	-	2 003,93	-
Off-peak index (BEI), UAH/MWh	-	-	-	1 307,30	-
DAM weighted average price, UAH/MWh	2 993,06	2 640,45	↑ + 13,35%	2 034,63	↑ + 47,11%
DAM weighted average price (IPS), UAH/MWh	2 993,06	2 640,45	↑ + 13,35%	2 076,95	↑ + 44,11%
DAM weighted average price (BEI), UAH/MWh	-	-	-	1 705,85	-
DAM volume of purchase and sale, MWh	788 429,8	664 400,7	↑ + 18,67%	2 715 434,8	↓ - 70,96%
DAM volume of purchase and sale (IPS), MWh	788 429,8	664 400,7	↑ + 18,67%	2 405 768,0	↓ - 67,23%
DAM volume of purchase and sale (BEI), MWh	-	-	-	309 666,8	-
DAM average daily volume of trades, MWh	25 433,2	21 432,3	↑ + 18,67%	87 594,7	↓ - 70,96%

INTRADAY MARKET

Indicator	August 2022	July 2022	Change, %	August 2021	Change, %
IDM weighted average price, UAH/MWh	3 002,54	2 724,34	10,21%	2 976,69	↑ + 0,87%
IDM weighted average price (IPS), UAH/MWh	3 002,54	2 724,34	10,21%	2 984,13	↑ + 0,62%
IDM weighted average price (BEI), UAH/MWh	-	-	-	1 851,95	-
IDM volume of purchase and sale, MWh	49 444,2	43 798,2	12,89%	185 807,8	↓ - 73,39%
IDM volume of purchase and sale (IPS), MWh	49 444,2	43 798,2	12,89%	184 587,7	↓ - 73,21%
IDM volume of purchase and sale (BEI), MWh	-	-	-	1 220,1	-
IDM average daily volume of trades, MWh	1 595,0	1 412,8	12,90%	5 993,8	↓ - 73,39%

Information on the DAM/IDM participants

Number of the DAM/IDM participants who submitted orders on the DAM and the IDM during August 2022



● Number of trading participants on the DAM ● Number of trading participants on the IDM

12 new DAM/IDM participants were registered in August 2022. As of 31.08.2022, there were 573 agreements on participation in the DAM and the IDM. There are 37 electricity producers, 31 distribution system operators (DSOs), 469 electricity suppliers, 29 traders, 5 consumers, the Transmission system operator and the Guaranteed Buyer is also among the participants of the DAM/IDM.

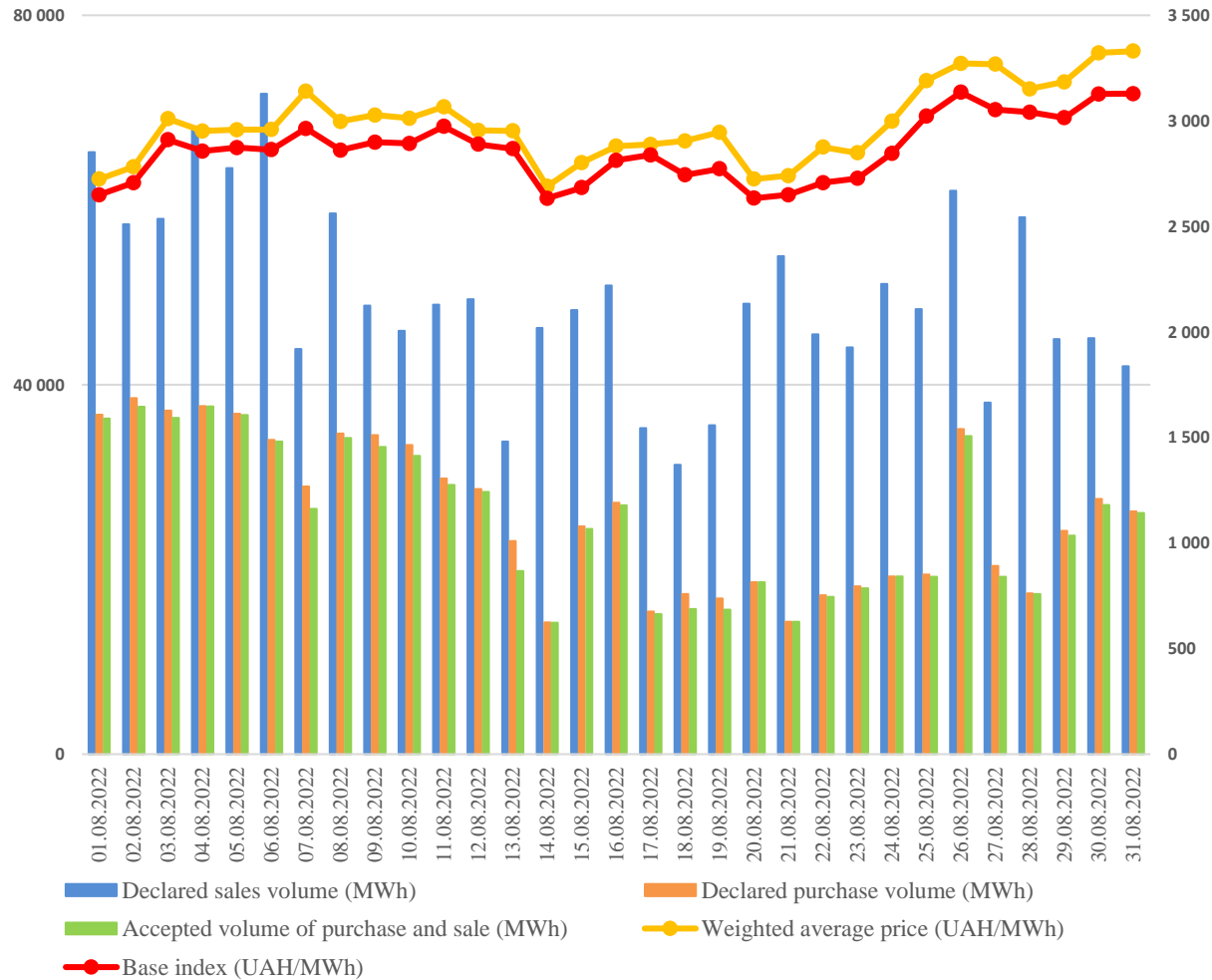
The participation of 10 participants has been suspended on the DAM/IDM, for 9 of them - due to repeated violation of the DAM/IDM Rules during the year, and for another 1 - due to the penalties non-payment.

The participation of 7 participants was terminated on the DAM/IDM in August 2022, for 5 of which – on the basis of the respective statements, for 2 – due to the fact that the violations, led to the suspension of participation on the DAM/IDM (non-payment for the market operator services), were not eliminated within 11 months.

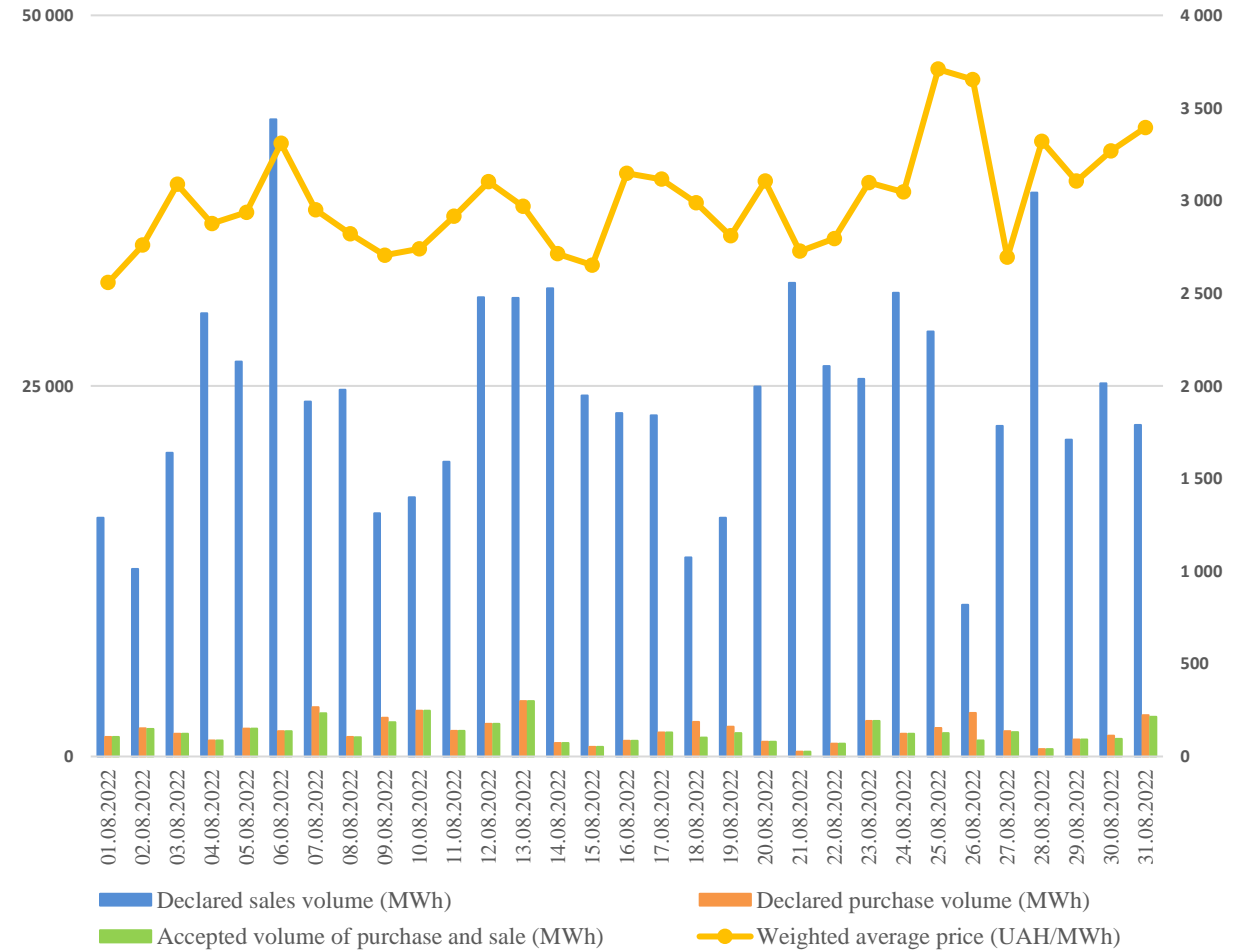
Orders.

Consolidated orders for sale and purchase on the DAM and IDM

Day-ahead market



Intraday market



Orders.

Demand and supply on the DAM and IDM in the IPS of Ukraine

Day-ahead market

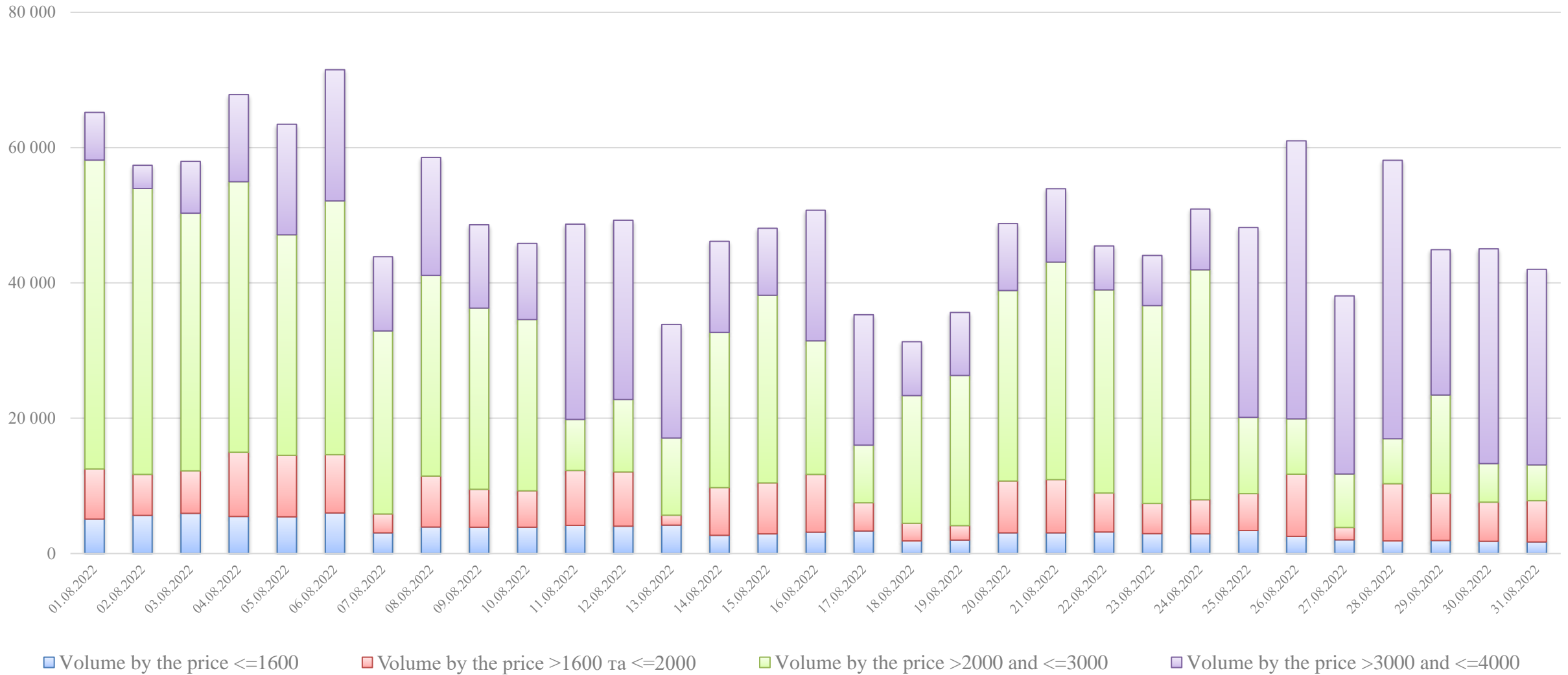
Дата	1	2	3	4	5	6	7	8	9	10	11	12	13	14	15	16	17	18	19	20	21	22	23	24
01.08.2022	174,8	667,6	700,6	866,3	856,8	714,9	221,1	1694,0	1507,5	1548,9	1909,3	2236,3	2362,2	2315,8	2173,0	2107,1	1813,1	1647,0	933,7	696,3	650,5	443,9	610,6	-422,5
02.08.2022	-50,1	535,0	517,6	626,4	677,8	513,6	-32,7	1472,2	771,1	846,2	1383,2	1941,0	2247,0	2244,8	1839,8	1639,2	1259,6	1049,9	205,6	6,9	-40,1	-25,2	-100,0	-458,5
03.08.2022	168,3	623,6	600,1	722,3	729,1	610,9	257,0	299,3	279,7	568,8	1609,3	2366,1	2803,7	2928,2	2411,0	1902,8	1315,2	369,1	355,6	53,5	56,5	-46,3	114,6	-331,3
04.08.2022	443,5	930,1	942,4	1076,4	1041,5	936,6	541,8	693,7	775,2	1979,6	2454,2	2855,4	3028,0	2851,3	2756,1	2358,8	1893,6	1069,4	570,4	313,3	221,1	91,5	329,7	-6,6
05.08.2022	437,3	821,9	796,8	918,8	916,9	797,7	437,2	751,2	899,5	1257,0	1932,9	2385,7	2610,8	2434,2	2237,5	1809,4	1369,8	1405,1	841,6	419,4	353,0	303,8	507,1	-32,3
06.08.2022	241,2	789,9	842,8	983,0	1016,2	958,0	710,5	1241,2	1621,9	2173,0	2750,1	3266,0	3358,7	3282,8	3071,7	2631,2	1918,7	1905,5	1266,2	836,5	799,7	772,3	952,2	89,7
07.08.2022	-118,2	100,4	-110,3	-51,3	-1,6	24,4	-77,4	550,8	888,0	1296,4	1631,6	2149,4	2334,4	2357,0	2088,3	1665,6	962,4	968,1	190,8	-126,6	-199,5	-231,9	-223,5	-1175,9
08.08.2022	120,2	570,1	582,3	734,5	740,7	676,0	241,7	864,7	1064,6	1523,3	1756,5	1683,6	2025,5	2015,2	1804,1	1408,0	1373,9	1537,4	686,4	648,3	757,5	679,6	771,3	-415,9
09.08.2022	-220,3	263,8	282,3	357,3	382,3	303,0	-110,2	576,0	677,6	1008,4	1362,4	1299,0	1557,8	1489,3	1206,6	1373,8	753,2	980,8	247,0	214,0	297,0	247,2	327,7	-847,7
10.08.2022	-172,5	290,7	278,9	389,6	410,9	239,7	-163,1	422,8	515,4	835,1	1287,0	1199,6	1449,8	1342,6	1042,4	644,5	678,0	880,1	234,5	319,4	360,6	297,3	336,4	-769,5
11.08.2022	273,3	721,1	724,3	808,9	831,9	709,6	252,5	758,3	824,6	1069,7	1291,7	1233,6	1514,5	1396,8	1110,2	729,6	745,4	835,5	499,1	666,7	663,0	715,5	838,8	-371,5
12.08.2022	228,4	663,3	723,6	781,7	777,0	674,2	165,9	487,6	533,2	864,2	1546,8	1518,2	1805,7	1760,1	1617,3	1283,0	1028,3	782,2	655,5	653,1	692,0	717,0	898,1	-291,7
13.08.2022	84,0	163,2	-90,8	21,5	50,1	-27,3	-350,0	501,4	630,1	1008,9	1468,2	1629,2	1933,3	1902,6	1837,9	1339,4	831,1	482,4	105,4	-336,7	-307,5	-391,6	-489,3	-1216,2
14.08.2022	410,5	632,7	651,1	750,2	816,5	782,7	587,6	1083,4	1464,1	1882,5	2249,0	2197,9	2388,3	2460,7	2728,9	2314,1	1716,1	1385,8	901,7	1106,3	1133,2	1093,8	1158,6	10,3
15.08.2022	260,3	608,1	617,0	743,2	782,7	684,2	209,4	573,4	777,7	1205,2	1700,5	1908,3	2262,0	2235,0	1956,4	1526,6	1015,3	680,3	791,4	784,3	672,8	534,4	1125,5	-226,8
16.08.2022	316,6	698,4	681,3	735,8	734,5	694,3	274,6	389,4	435,9	760,4	1344,2	1730,6	2039,7	2075,0	1813,7	1504,8	1093,1	944,1	1104,0	1034,6	978,6	892,2	1319,8	-53,4
17.08.2022	118,3	474,5	467,0	551,8	591,8	500,6	27,3	634,3	689,4	703,4	1453,1	2235,0	1960,9	1734,3	1371,2	695,5	713,8	921,5	578,9	496,3	540,6	813,3	96,1	-96,1
18.08.2022	-535,5	92,8	154,1	188,2	88,8	183,6	8,3	222,9	506,0	1021,1	1672,1	1919,6	2157,6	1874,1	1594,7	1234,9	874,7	745,9	601,9	65,3	-74,9	-186,5	353,8	-793,6
19.08.2022	-405,1	101,8	89,1	128,8	16,5	92,5	-22,9	189,6	503,4	1225,4	2247,8	2541,0	2817,6	2613,6	2257,0	1730,4	1447,1	781,0	505,7	176,2	-58,4	-95,2	498,6	-608,7
20.08.2022	401,1	804,3	825,5	941,3	825,7	963,8	628,0	748,3	1174,6	1670,4	2411,8	2636,7	2798,1	2690,8	2409,3	2128,1	1560,4	804,6	592,2	671,7	803,1	702,5	893,6	89,9
21.08.2022	505,3	895,0	914,9	1049,6	1041,4	1089,3	874,4	1056,9	1594,8	2335,3	2905,8	3445,5	3718,1	3724,8	3516,8	3050,4	2315,7	1401,0	666,1	863,9	817,6	766,4	838,7	183,6
22.08.2022	423,9	740,6	711,5	805,5	703,5	815,9	428,9	624,5	1056,0	1663,1	2523,4	2789,8	3137,8	2819,7	2668,2	2127,9	1403,5	913,9	187,2	510,3	594,8	477,3	304,8	-159,1
23.08.2022	188,5	482,0	434,2	524,3	424,1	437,1	123,4	371,5	785,0	1348,0	2223,4	2903,2	3228,0	2918,3	2752,0	2187,9	1443,5	724,3	214,0	694,0	576,0	423,7	194,0	-194,0
24.08.2022	260,1	590,6	541,7	667,2	548,2	571,8	305,9	546,3	1321,3	1930,8	2760,6	3115,4	3500,7	3386,5	3080,6	2465,5	1781,0	1101,9	512,9	643,7	640,9	686,4	615,7	81,3
25.08.2022	477,0	768,7	681,5	640,6	677,9	697,4	393,7	372,5	1193,2	1735,2	2438,6	2916,4	3172,3	2970,7	2809,3	2174,1	1294,3	932,6	346,6	641,2	505,5	518,4	519,4	-137,4
26.08.2022	348,9	455,5	471,8	635,0	643,8	556,5	9,1	521,5	709,7	1438,4	2033,8	2703,1	2931,0	2851,3	2489,0	1917,3	1058,6	1153,1	706,4	679,1	432,1	467,4	819,5	-237,8
27.08.2022	-238,4	-87,1	-141,9	-21,9	20,4	72,7	-116,9	-106,3	588,9	1196,2	1874,2	2399,0	2728,4	2727,0	2437,0	1963,3	1205,8	738,3	77,1	207,0	115,1	176,5	348,9	-466,6
28.08.2022	612,6	722,7	682,5	781,2	832,5	872,4	773,2	1414,1	2109,3	2926,2	3501,0	3833,7	3801,6	3507,9	2990,3	2262,2	1946,0	1184,9	1245,1	1131,5	1142,8	1302,2	383,5	37,7
29.08.2022	592,1	579,0	500,4	614,7	645,3	670,8	222,5	368,3	701,7	1308,2	1923,8	2141,5	2376,0	2228,3	1954,5	1393,4	578,8	475,9	306,1	438,1	211,5	230,2	557,1	-267,8
30.08.2022	21,3	332,6	354,0	433,3	443,7	330,9	-89,4	57,4	209,1	845,1	1470,6	2161,9	2442,6	2364,0	2073,7	1496,6	492,6	829,0	296,8	399,9	149,0	156,1	575,4	-432,0
31.08.2022	309,6	427,1	374,8	449,2	480,5	378,0	-34,9	89,7	378,4	1035,7	1447,1	1989,3	2250,7	1930,1	1554,6	1017,3	181,0	389,6	132,5	297,1	78,5	147,4	559,1	-152,6

Intraday market

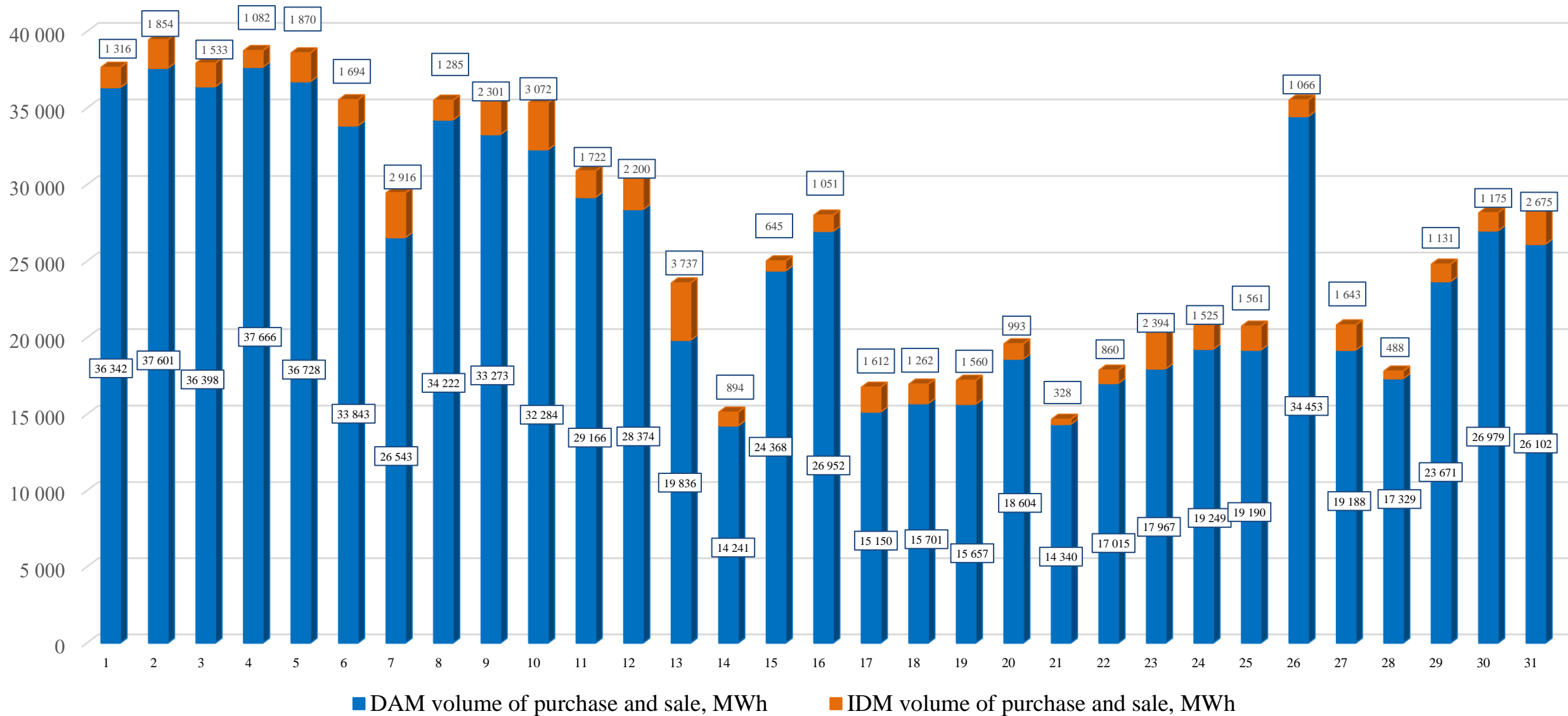
Дата	1	2	3	4	5	6	7	8	9	10	11	12	13	14	15	16	17	18	19	20	21	22	23	24
01.08.2022	196,7	937,1	996,4	841,7	842,1	670,8	176,6	320,5	216,4	396,7	636,7	904,4	1020,6	986,5	934,3	870	586,3	381,8	852,8	524,1	480,6	424	588,8	1,8
02.08.2022	40,6	584,3	592,3	724	780	598,3	65,5	145	84,8	276,7	623,2	940,5	1093,2	1008,7	814,5	628,4	425,3	161	407,7	241,6	215,5	83,7	242,3	-25
03.08.2022	249	930,4	896,9	1067,1	1080,7	879,5	368,1	455,3	469,1	921,3	1136,6	1543,6	1767,1	1684,9	1475,4	1179,5	781	622,5	552,3	147,2	187,3	260,5	189,5	97,8
04.08.2022	879,6	1855,7	1408,5	1594,8	1559,4	1403,1	1076	983,6	996,3	1246,2	1705,2	2140,9	2341	2143,8	1888,8	1487,1	1000,3	1346,8	715,6	114,7	301,1	146,8	468	8,9
05.08.2022	425,8	815,5	790,6	815,9	793,8	653,7	307,7	952	1094	1446,8	1887,7	2319,2	2481	2280,8	2089,6	1684,8	1226,7	1484,8	455,5	207,3	98,6	100,5	353,2	5,8
06.08.2022	361,5	1184,1	1265,2	1474,8	1524,9	1435,8	1064,9	1601,5	1923,2	2816,7	3415,2	3900,8	3365,4	3273	3010,1	2524,4	1878,3	2036,2	765,7	530,2	564,2	565,2	683,2	134
07.08.2022	-123,7	89,7	80,2	51,6	58,6	1,6	-93,7	325	911,8	1361,6	1576,2	2049,7	2229,8	2254,8	1980,3	1559,1	845,1	1411,4	635,4	674,3	1426,8	749,8	754,1	-193,2
08.08.2022	116,7	566,6	578,8	730,4	736,3	671,8	236	664,2	860,9	1310	1827,2	1709,3	2071,9	2053,5	1850,7	1438,7	1407,5	746,6	709,3	766,3	814,5	833,1	752,3	-35,3
09.08.2022	-107,4	243,1	268,8	344,1	367,4	266,9	-176,4	175	314,5	617,1	1276,9	1129,1	1407,4	1377,3	1047,1	1264	802	309,5	247,8	316,6	636,5	647	659,5	375,3
10.08.2022	199,3	276,1	266,9	356,8	369,5	201,4	184,5	338,9	348,8	642,6	1303,3	1138,5	1448	1262,1	978,6	606,9	632,4	609	615	708,7	636,8	629,9	653,4	-0,5
11.08.2022	245,6	693,8	683	764,2	786,6	663,8	207,3	723,4	653	914,2	1381,3	1352,2	1601,8	1490,1	1200,8	824,2	842	622,6	523,6	565,6	537,6	527,8	357	-1,1
12.08.2022	432,1	1255,5	1377,3	1499,5	1490	1310,6	313,4	1092,5	978	1333,8	2067,3	1796,1	2074,2	2002,7	1835,3	1437,4	1434,2	1185,3	960,8	853,8	824,6	737	490,3	6,9
13.08.2022	266,3	773	780,7	887	916,9	841,5	540,6	1043,8	1262	1665,5	1951,4	2036,5	2245,7	2203,6	2455,4	1880	1438,3	934,7	697,2	650,5	657,7	600,3	475,6	0,9
14.08.2022	356,7	696,9	709,7																					

Orders.

DAM volumes of sale orders, ranking by the price in August 2022, MWh



Volume of trades on the DAM and the IDM in August 2022



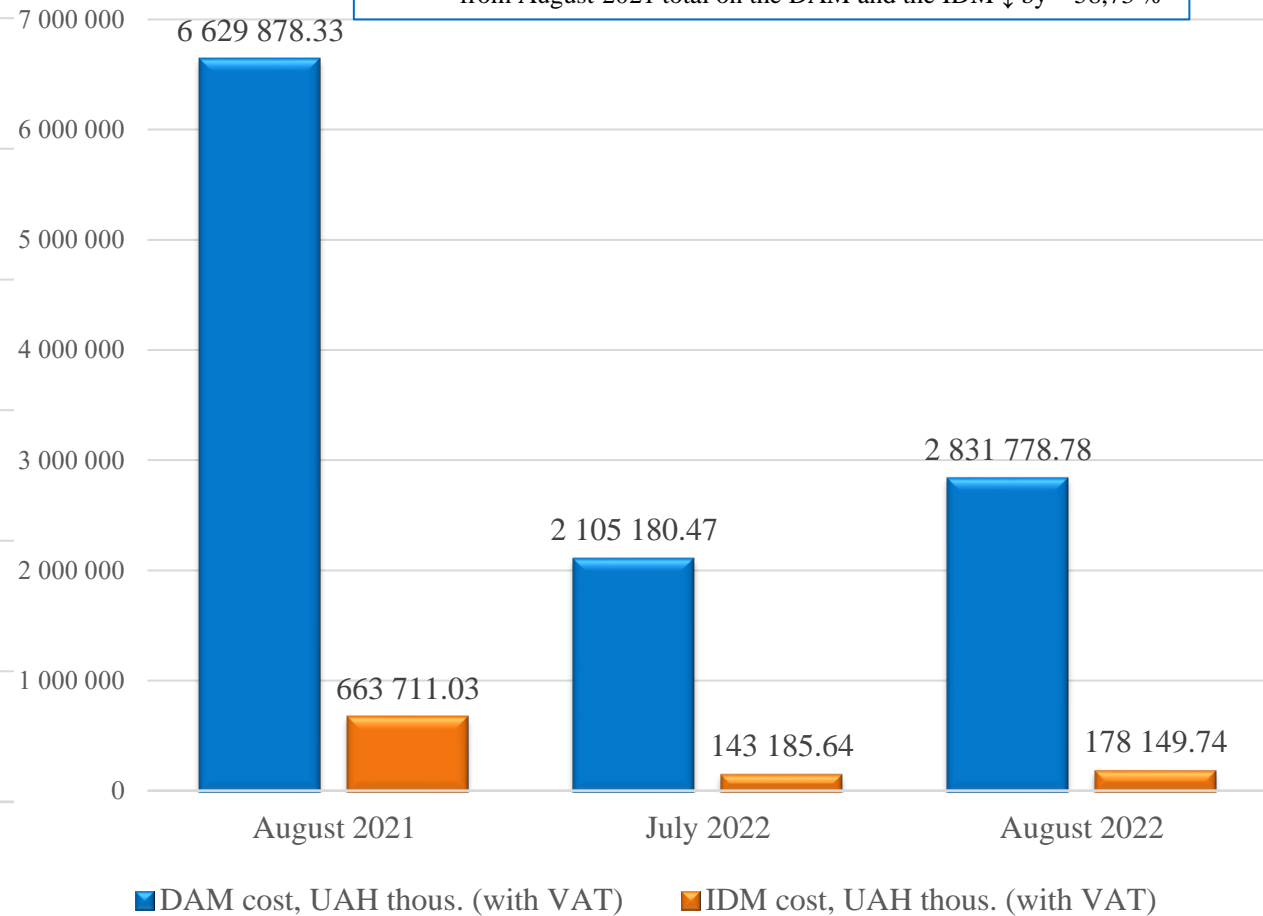
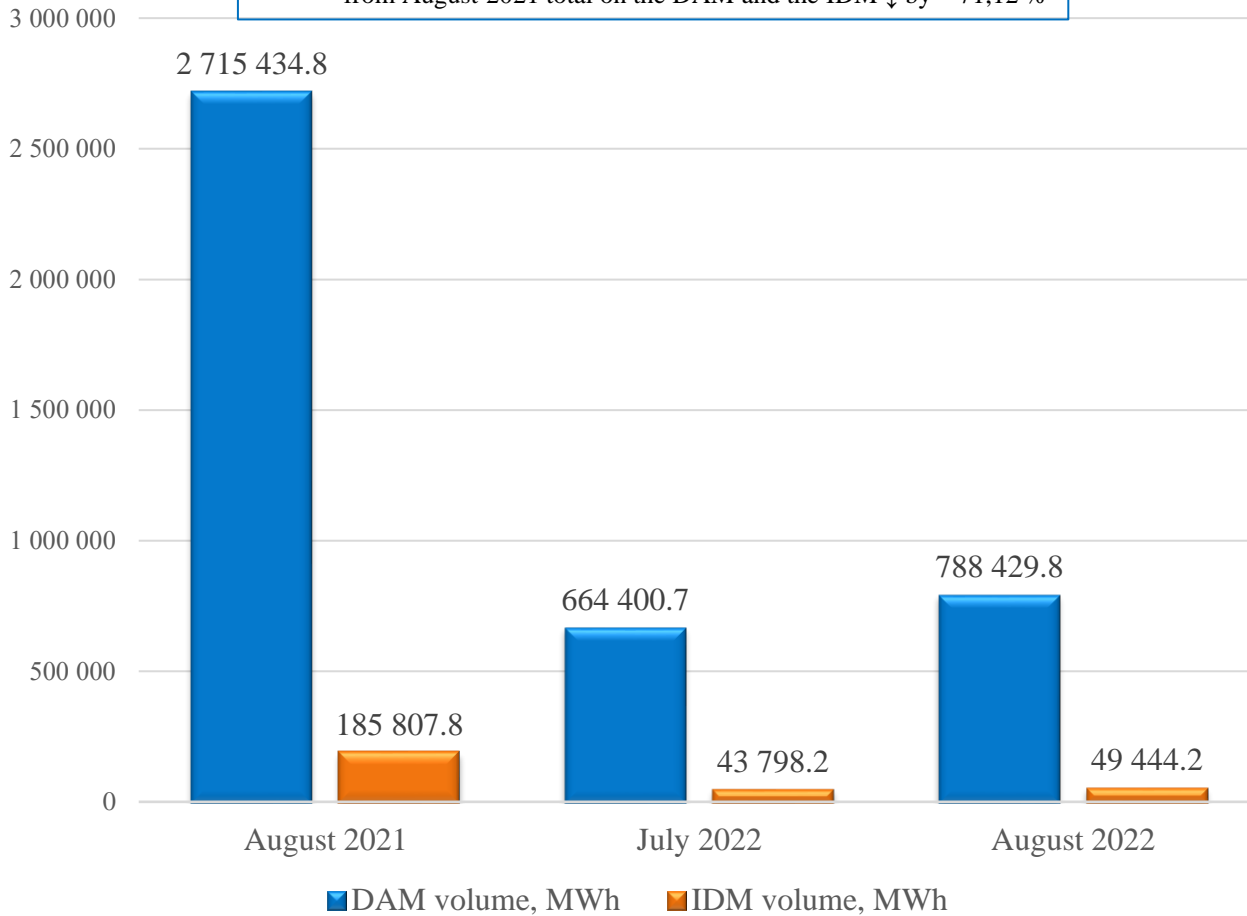
Comparison of volume and cost of electricity purchase and sale for July, August 2022 and August 2021

Volume of trades

Cost

Deviation: from July 2022 total on the DAM and the IDM ↑ by + 18,31 %
from August 2021 total on the DAM and the IDM ↓ by – 71,12 %

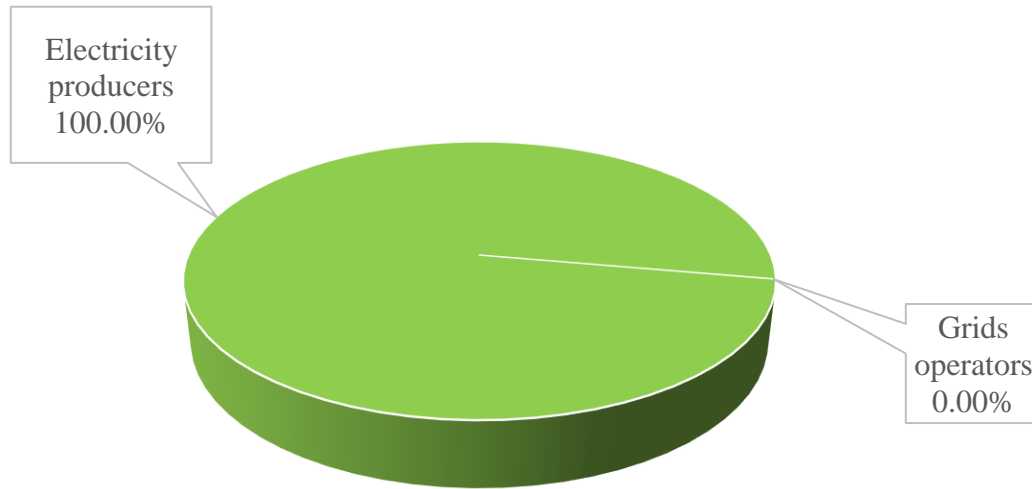
Deviation: from July 2022 total on the DAM and the IDM ↑ by + 33,87 %
from August 2021 total on the DAM and the IDM ↓ by – 58,73 %



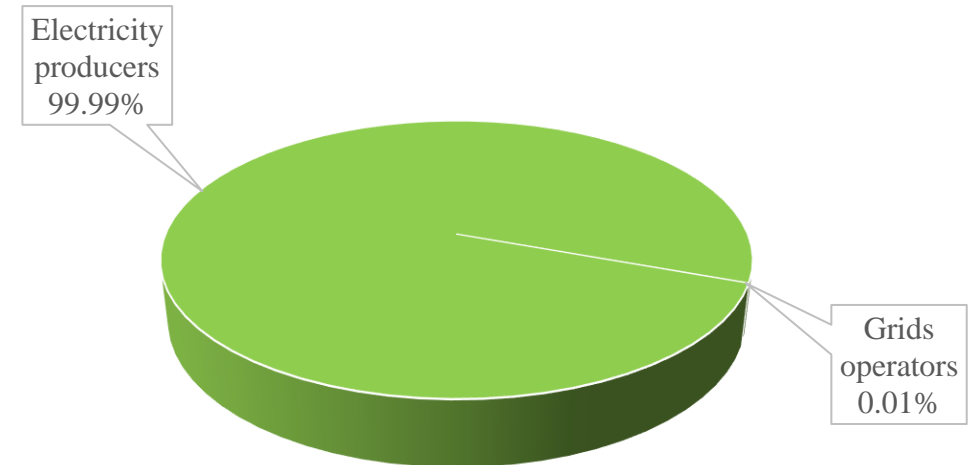
Structure of DAM and IDM sale volumes for August 2022 by activity types, %

Day-ahead market

Declared volumes

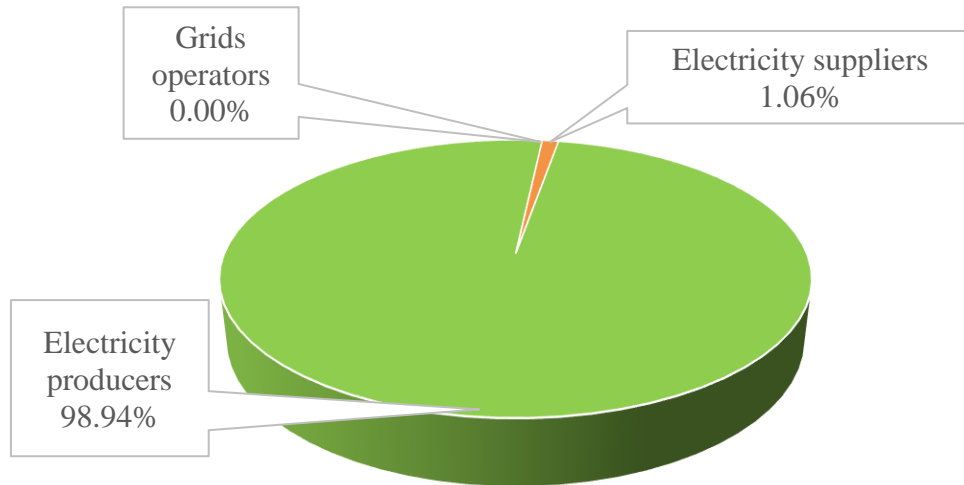


Accepted volumes

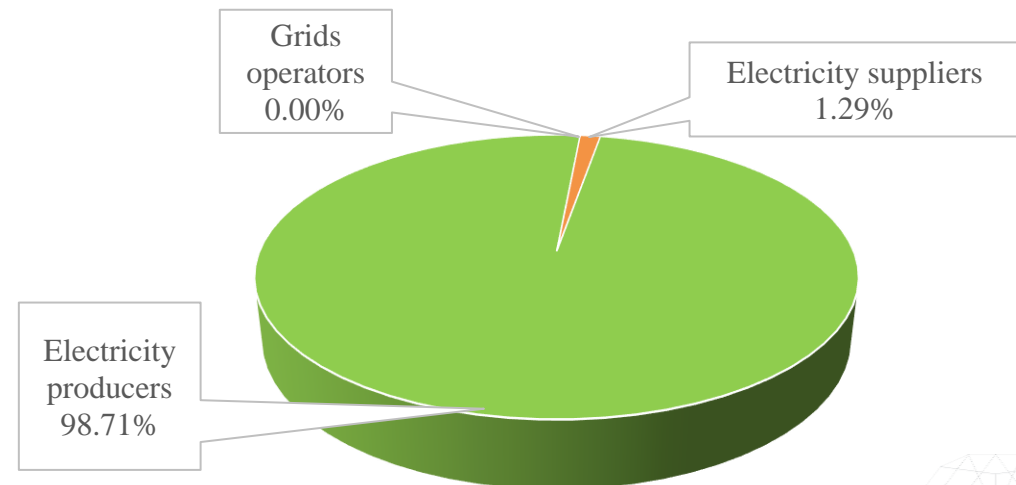


Intraday market

Declared volumes



Accepted volumes

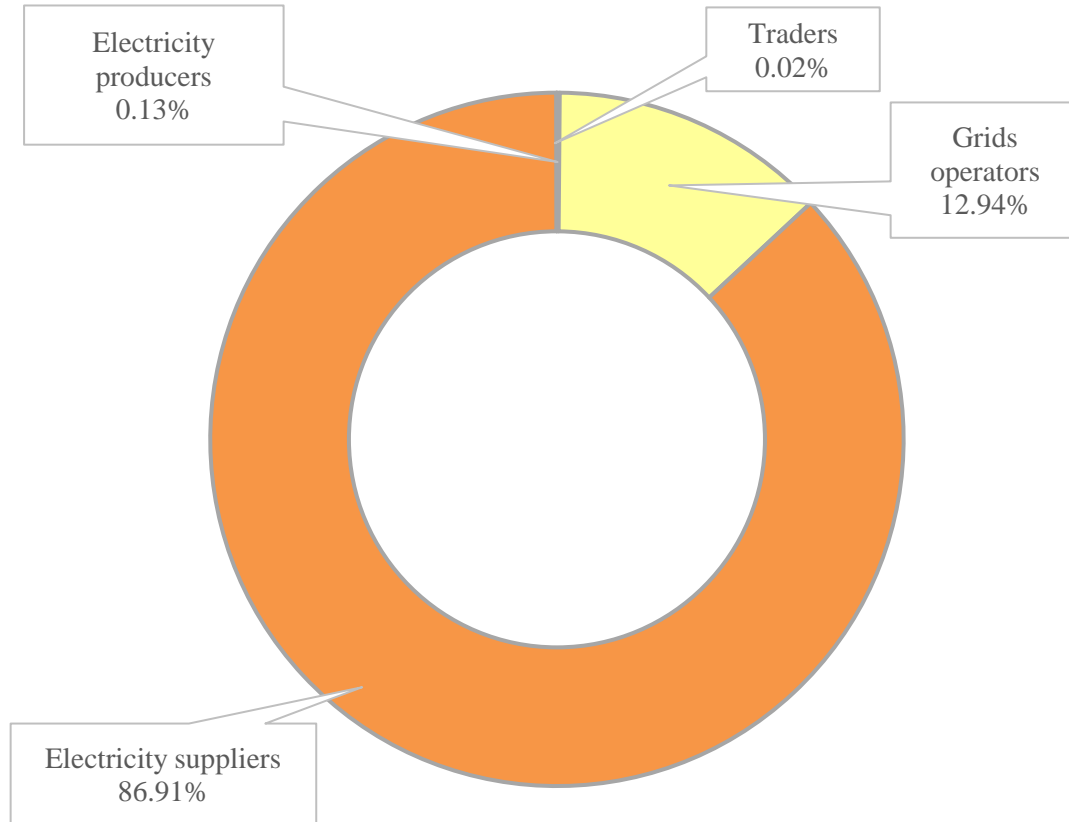


*Guaranteed Buyers' sale volumes are included in the producers' sale volumes.

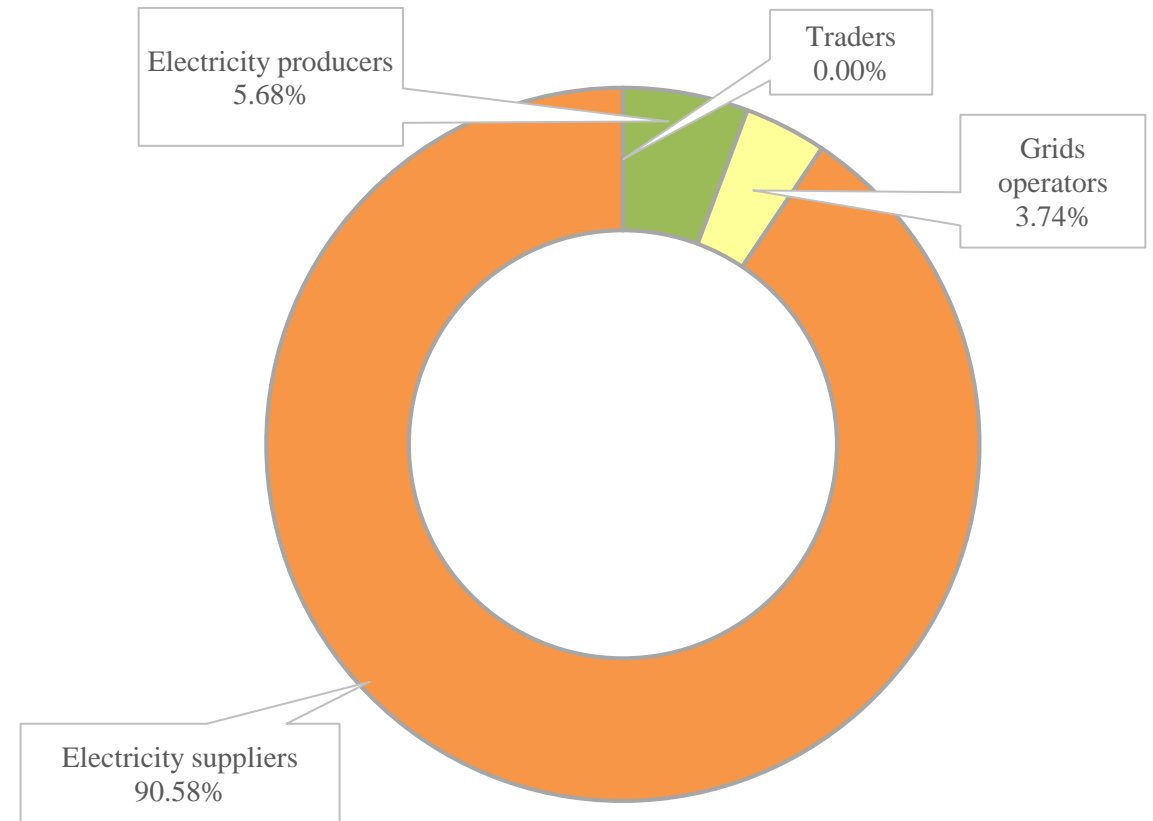
**The amount of interest may differ from 100% due to rounding to 2 decimal places.

Structure of DAM and IDM purchase volumes for August 2022 by activity types, %

Day-ahead market



Intraday market



* Guaranteed Buyers' purchase volumes are included in the electricity suppliers' purchase volumes.

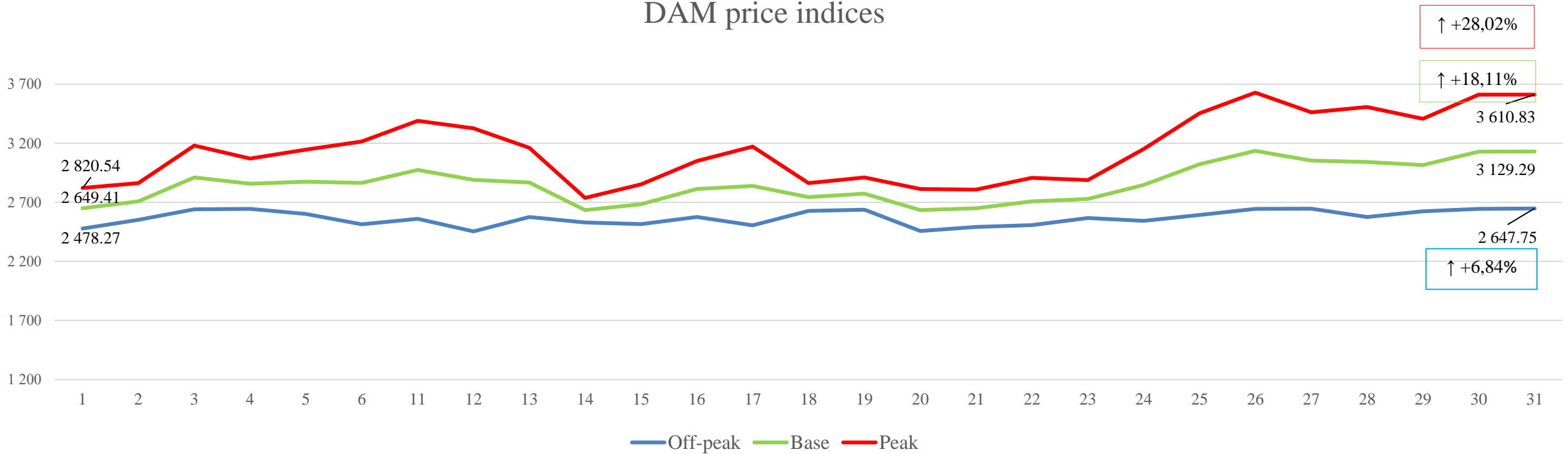
** The amount of interest may differ from 100% due to rounding to 2 decimal places.

DAM price indices for August 2022, UAH/MWh

Trading zone: IPS of Ukraine

Price indices	Trading zone: IPS of Ukraine				
	01-10 of August 2022	11-20 of August 2022	Change,%	21-31 of August 2022	Change,%
Base	2 847,89	2 785,25	↓ - 2,20%	2 950,46	↑ + 5,93%
Peak	3 119,53	3 027,15	↓ - 2,96%	3 311,78	↑ + 9,40%
Off-peak	2 576,25	2 543,36	↓ - 1,28%	2 589,14	↑ + 1,80%

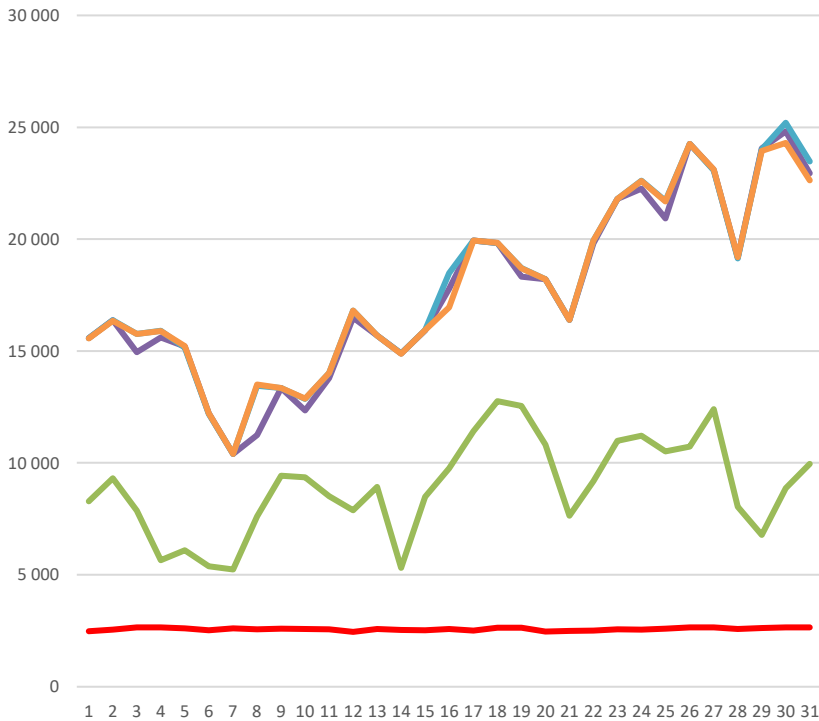
DAM price indices



DAM price indices.

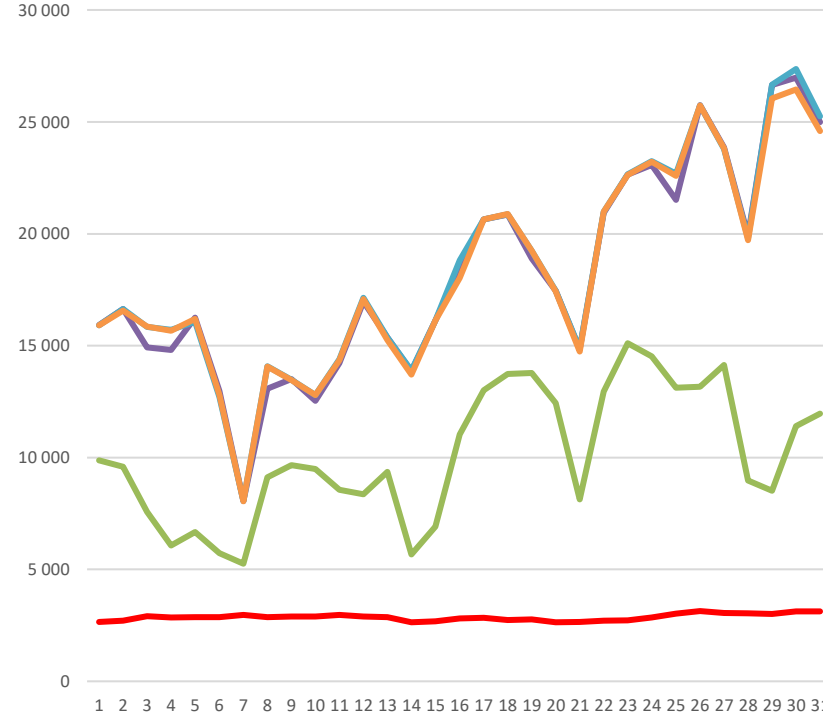
Comparison with price indices of European countries for August 2022, UAH/MWh

Period Off-peak



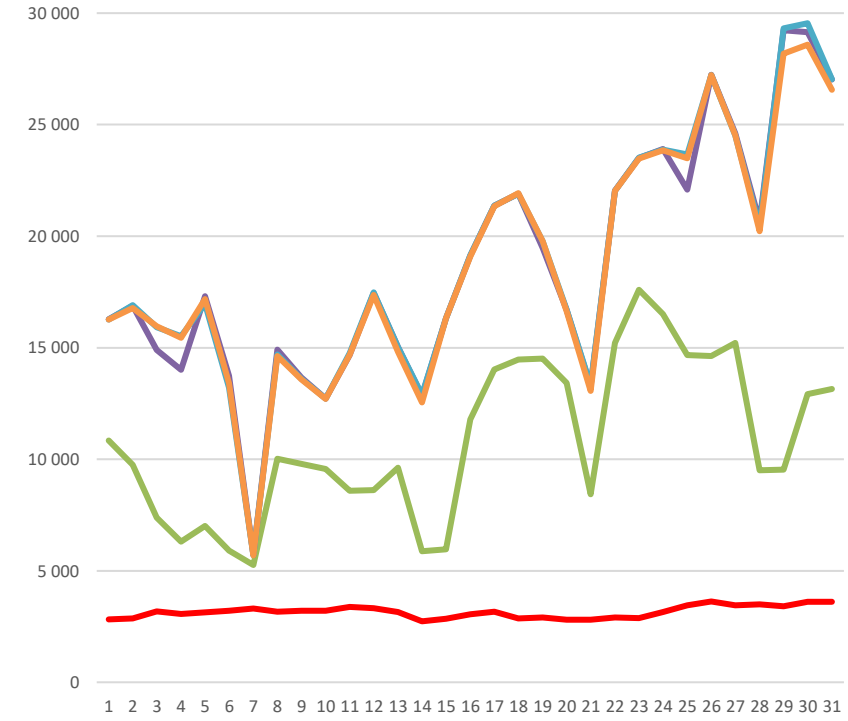
— Ukraine, IPS
 — Poland
 — Romania
— Hungary
 — Slovakia

Period Base



— Ukraine, IPS
 — Poland
 — Romania
— Hungary
 — Slovakia

Period Peak



— Ukraine, IPS
 — Poland
 — Romania
— Hungary
 — Slovakia

Prices. Comparison with prices in Europe for August 2022

		DAM		Comparison with other countries						
		UA	PL	RO		HU		SK		
Prices:			IPS/PL	IPS/RO	IPS/HU	IPS/SK				
BASE	UAN/MWh	2 864,08	10 124,13 ▼ -71,7%	18 151,86 ▼ -84,2%	18 331,72 ▼ -84,4%	18 214,65 ▼ -84,3%				
PEAK	UAN/MWh	3 157,95	10 844,42 ▼ -70,9%	18 637,07 ▼ -83,1%	18 756,91 ▼ -83,2%	18 624,93 ▼ -83,0%				
OFFPEAK	UAN/MWh	2 570,22	8 932,28 ▼ -71,2%	17 666,63 ▼ -85,5%	17 906,52 ▼ -85,6%	17 804,33 ▼ -85,6%				

The DAM average prices in August 2022 remain lower than the corresponding figures of neighboring countries by 71,7%-84,4%.

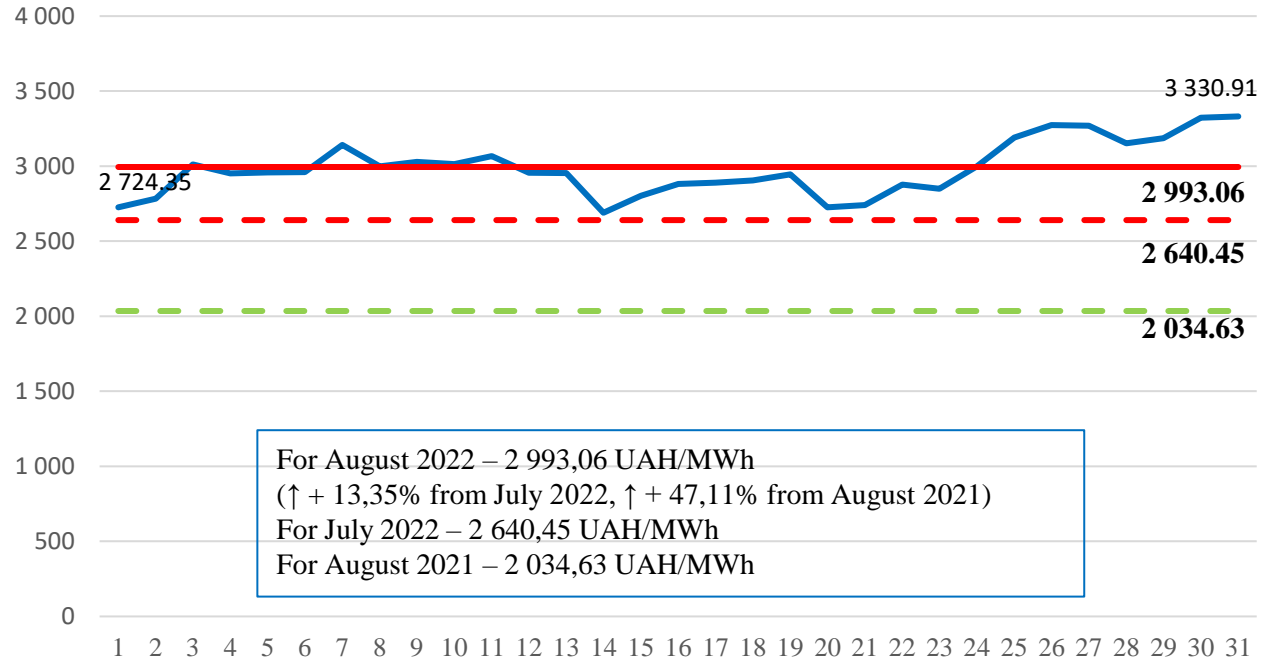
		IDM	Comparison with other countries		
		UA	SK	CZ	
Price:			IPS/SK	IPS/CZ	
Weighted average	UAN/MWh	3 002,54	19 433,48 ▼ -84,5%	16 530,92 ▼ -81,8%	

The IDM weighted average prices in August 2022 are lower than the corresponding figures of the European countries by 81,8%-84,5%.

Prices.

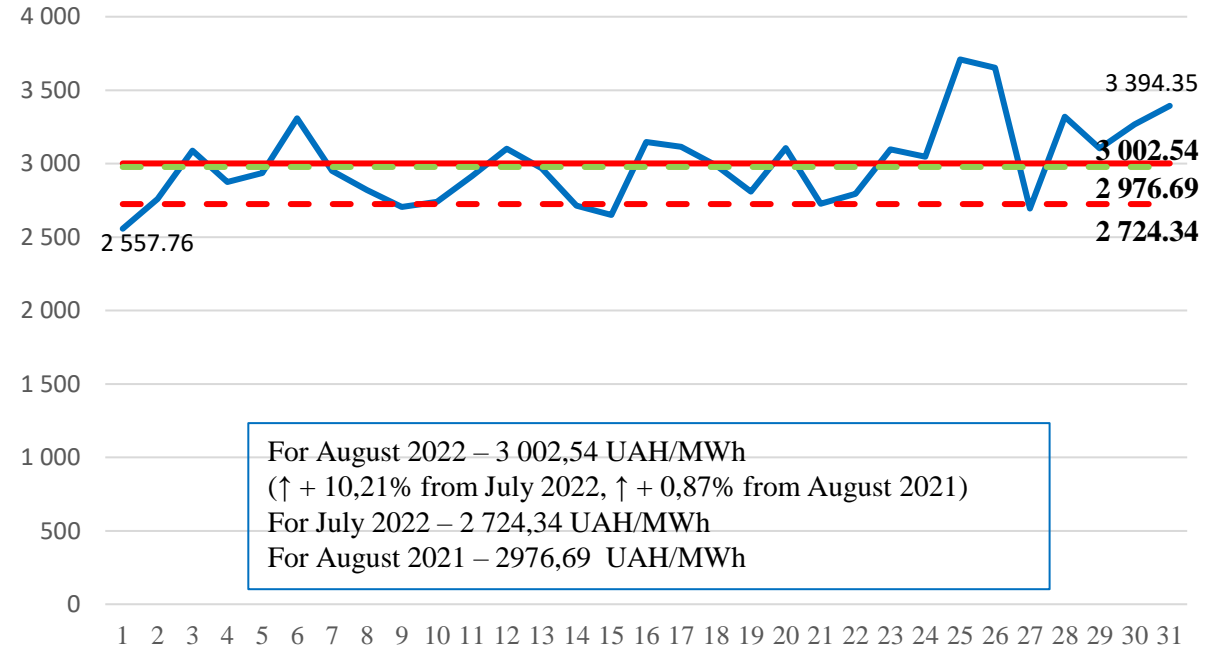
Weighted average prices of electricity purchase and sale

Day-ahead market



- DAM weighted average price, UAH/MWh
- DAM weighted average price for August 2022, UAH/MWh
- - DAM weighted average price for July 2022, UAH/MWh
- - DAM weighted average price for August 2021, UAH/MWh

Intraday market



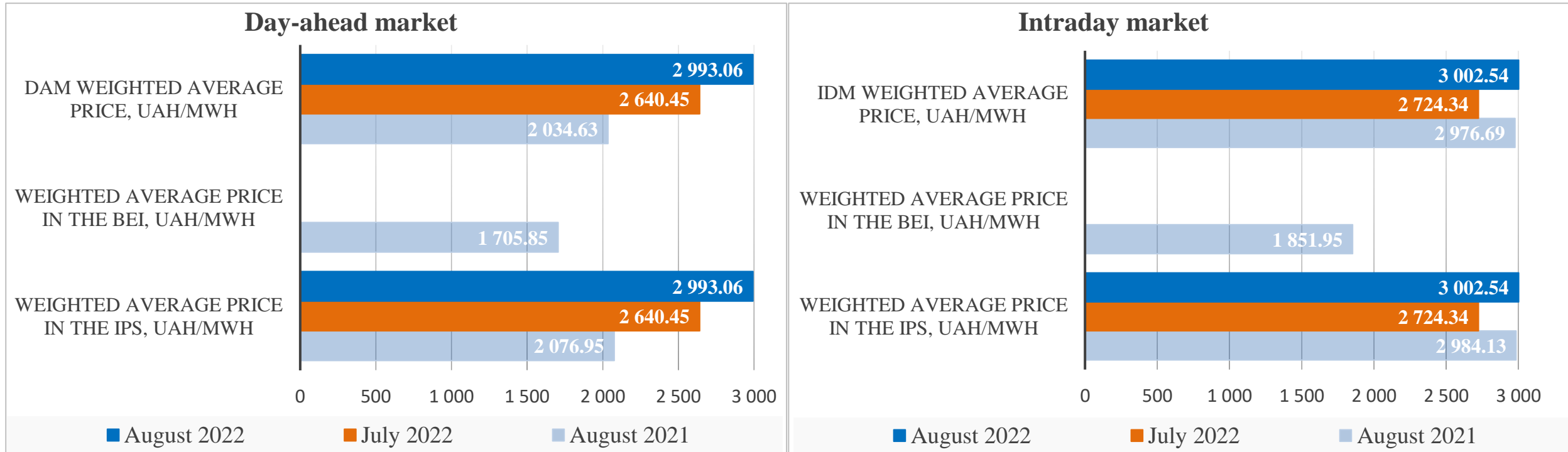
- IDM weighted average price, UAH/MWh
- IDM weighted average price for August 2022, UAH/MWh
- - IDM weighted average price for July 2022, UAH/MWh
- - IDM weighted average price for August 2021, UAH/MWh

* - All prices are net of VAT

10-days` analysis of DAM and IDM weighted average prices for August 2022

Indicator	August 01.08-10.08	August 11.08-20.08	Change,%	August 21.08-31.08	Change,%
DAM weighted average price, UAH/MWh	2 949,10	2 894,87	↓ - 1,84%	3 144,19	↑ + 8,61%
IDM weighted average price, UAH/MWh	2 869,23	2 975,41	↑ + 3,70%	3 201,12	↑ + 7,59%

Comparison of DAM and IDM weighted average prices for August, July 2022 and August 2021

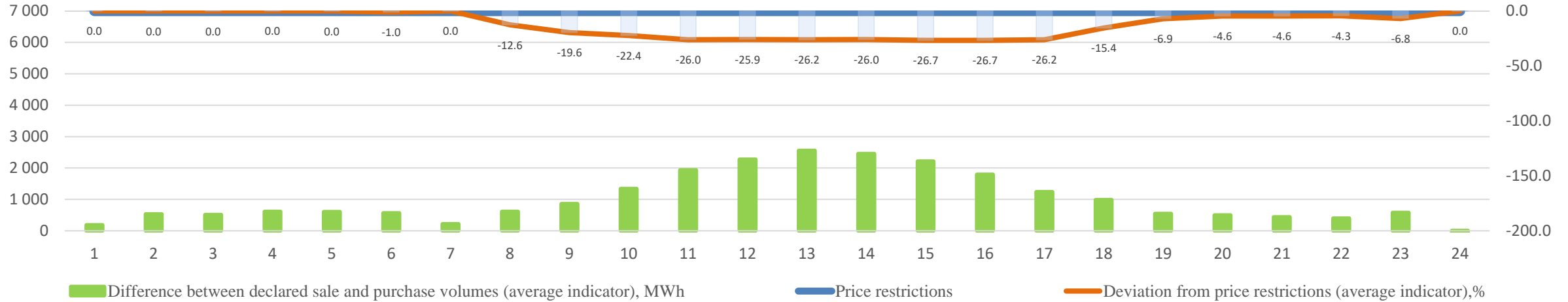


* - All prices are net of VAT

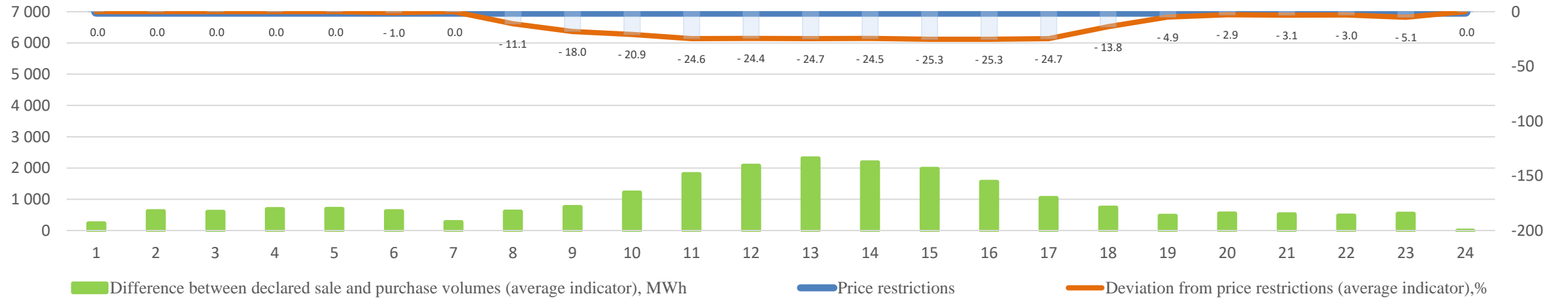
Prices.

Deviation of average hourly prices from price restrictions in August 2022

Deviation of average hourly prices from price restrictions on the DAM

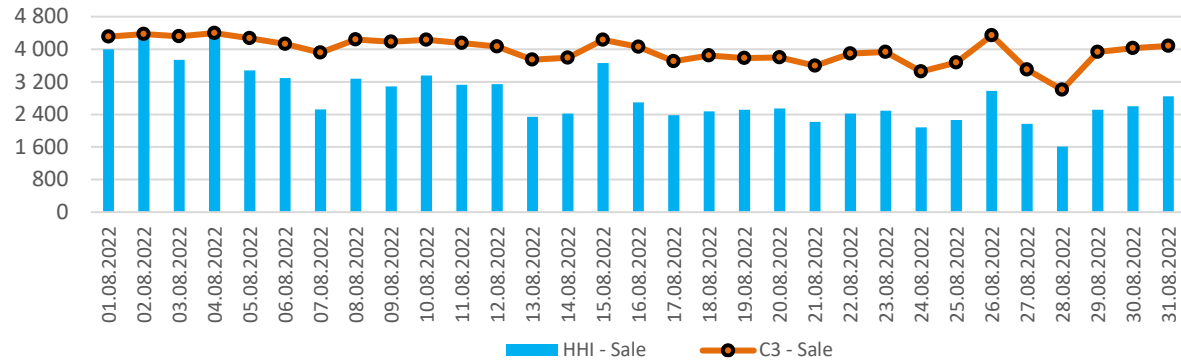


Deviation of average hourly prices from price restrictions on the IDM

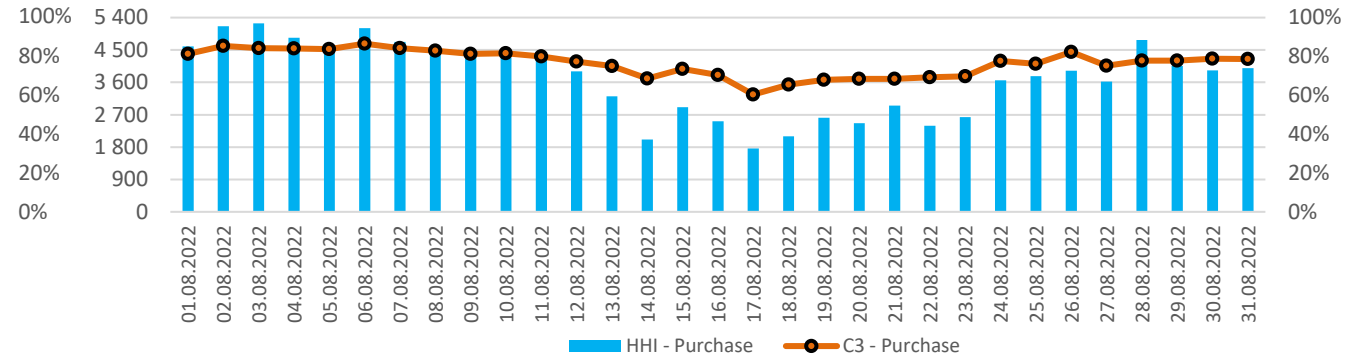


Herfindahl-Hirschman Index (HHI) and Market Concentration Ratio (C3)

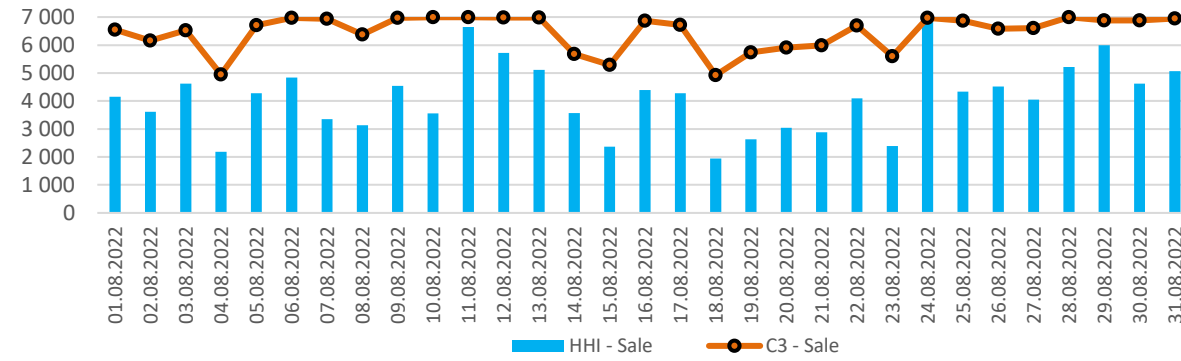
Market concentration indices (DAM, sale)



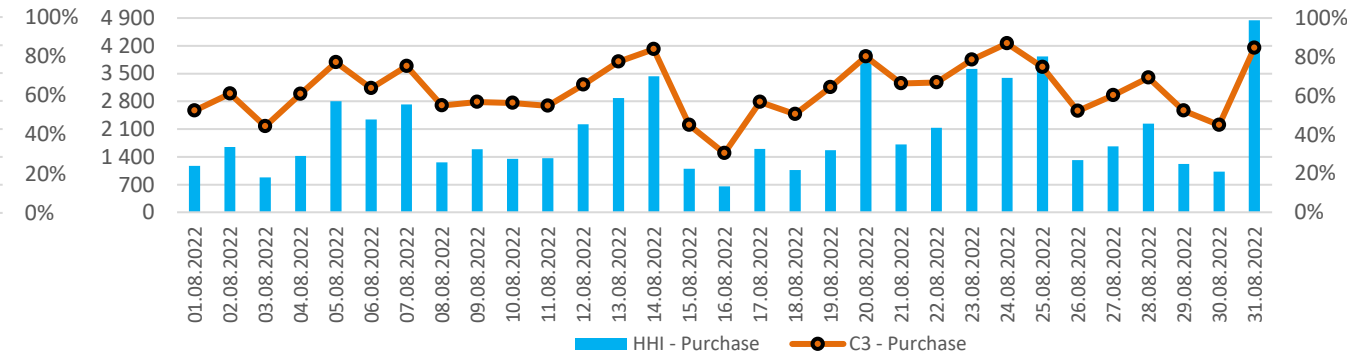
Market concentration indices (DAM, purchase)



Market concentration indices (IDM, sale)



Market concentration indices (IDM, purchase)



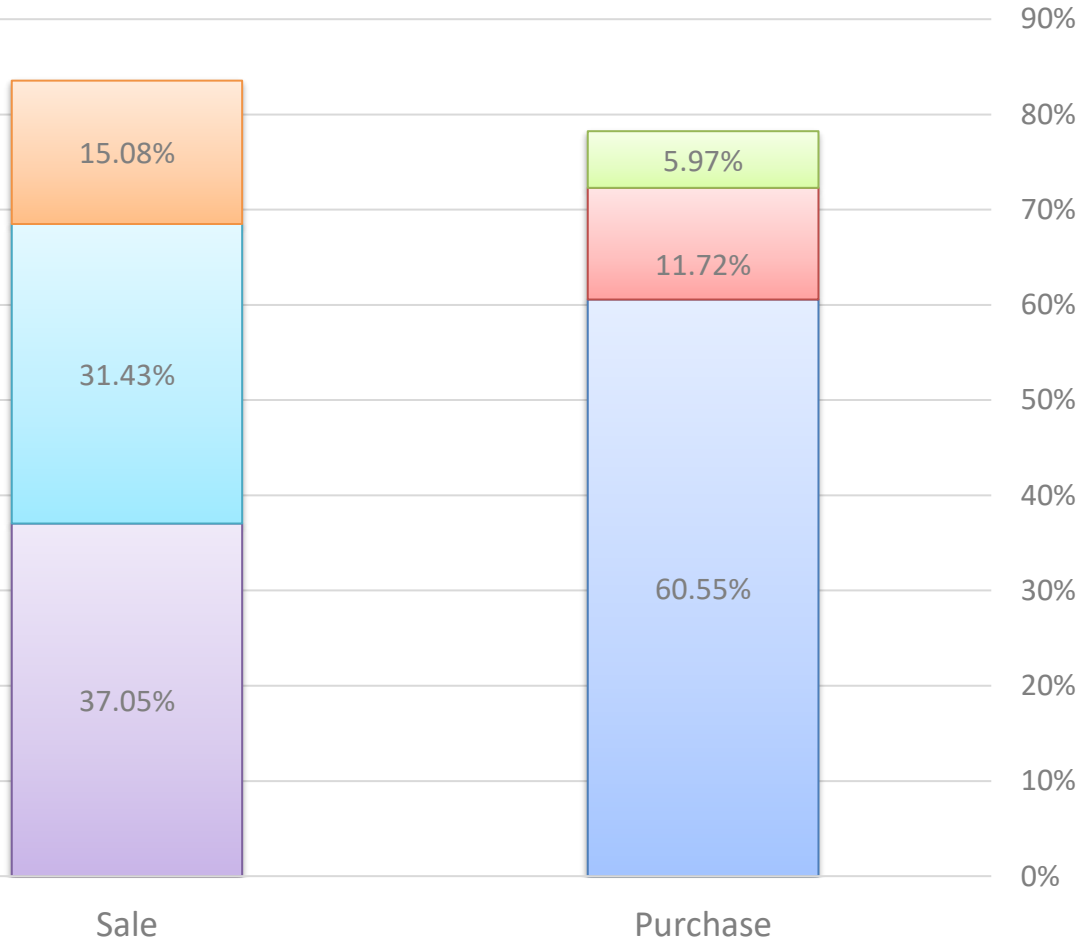
Indicator	Concentration		
	Low	Average	High
Market Concentration Index (C3)	less 45 %	45% - 70%	70% - 100%
Herfindahl-Hirschman Index (HHI)	less 1 000	1 000 – 1 800	1 800

The Herfindahl-Hirschman Index (HHI) is the sum of the market share squares of the participants during the purchase/sale transactions. Competition reacts to the share of each market participant during the analysis takes place. The higher the Herfindahl-Hirschman index is (higher concentration), the weaker the competition in the market.

The Market Concentration Ratio (C3) represents the percentage of the market share of the top three participants with the highest purchase/sale volumes. The higher the indicator is, the higher market concentration and the weaker the competition are.

Share in the volume of purchase and sale of the three largest DAM and IDM participants

Day-ahead market



Intraday market

