



# Analysis of the day-ahead market and the intraday market for April 2022

*Market Surveillance Department  
Surveillance division  
06.05.2022*

# THE MAIN INDICATORS OF DAM AND IDM



# The main indicators of DAM and IDM for April 2022

## DAY-AHEAD MARKET

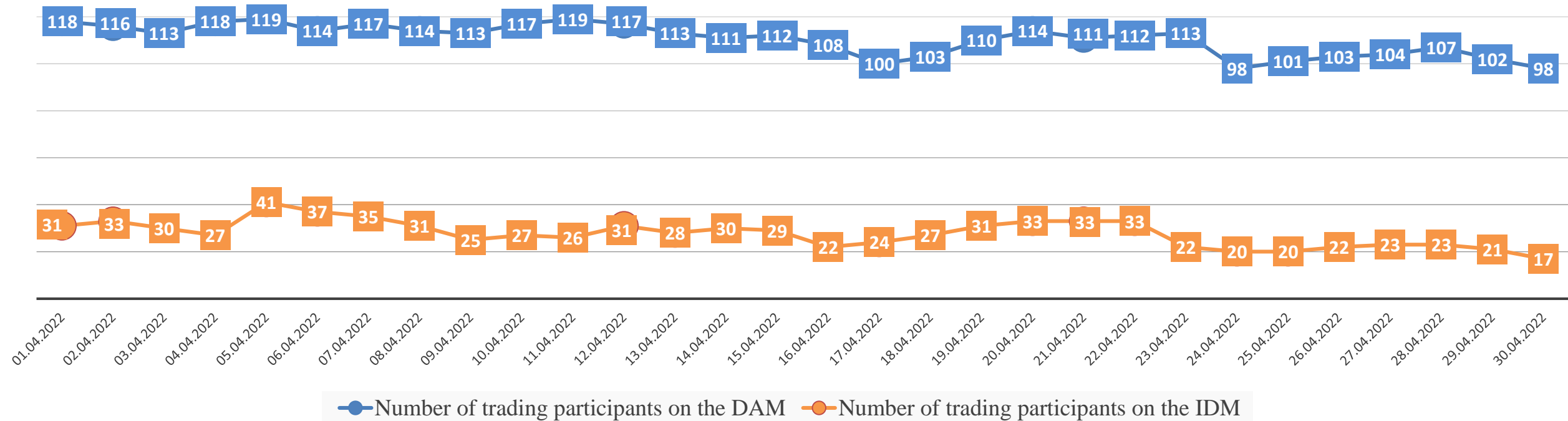
Indicator	April 2022	March 2022	Change,%	April 2021	Change,%
Base index (IPS), UAH/MWh	2 223,82	2 225,01	↓ - 0,05%	1 394,41	↑ + 59,48%
Peak index (IPS), UAH/MWh	2 646,25	2 646,25	0,00%	1 512,54	↑ + 74,95%
Off-peak index (IPS), UAH/MWh	1 801,40	1 802,64	↓ - 0,07%	1 276,28	↑ + 41,15%
Base index (BEI), UAH/MWh	-	-	-	1 620,23	-
Peak index (BEI), UAH/MWh	-	-	-	1 929,54	-
Off-peak index (BEI), UAH/MWh	-	-	-	1 310,92	-
DAM weighted average price, UAH/MWh	2 330,00	2 299,33	↑ + 1,33%	1 474,43	↑ + 58,03%
DAM weighted average price (IPS), UAH/MWh	2 330,00	2 299,33	↑ + 1,33%	1 450,22	↑ + 60,66%
DAM weighted average price (BEI), UAH/MWh	-	-	-	1 655,17	-
DAM volume of purchase and sale, MWh	752 135,9	1 188 573,0	↓ - 36,72%	2 786 182,1	↓ - 73,00%
DAM volume of purchase and sale (IPS), MWh	752 135,9	1 188 573,0	↓ - 36,72%	2 457 038,2	↓ - 69,39%
DAM volume of purchase and sale (BEI), MWh	-	-	-	329 143,9	-
DAM average daily volume of trades, MWh	25 071,2	38 341,1	↓ - 34,61%	92 872,7	↓ - 73,00%

## INTRADAY MARKET

Indicator	April 2022	March 2022	Change,%	April 2021	Change,%
IDM weighted average price, UAH/MWh	2 562,62	2 687,75	↓ - 4,66%	1 408,25	↑ + 81,97%
IDM weighted average price (IPS), UAH/MWh	2 562,62	2 687,75	↓ - 4,66%	1 407,09	↑ + 82,12%
IDM weighted average price (BEI), UAH/MWh	-	-	-	1 710,15	-
IDM volume of purchase and sale, MWh	20 007,8	55 273,4	↓ - 63,80%	674 596,5	↓ - 97,03%
IDM volume of purchase and sale (IPS), MWh	20 007,8	55 273,4	↓ - 63,80%	672 025,3	↓ - 97,02%
IDM volume of purchase and sale (BEI), MWh	-	-	-	2 571,2	-
IDM average daily volume of trades, MWh	666,9	1 783,0	↓ - 62,60%	22 486,6	↓ - 97,03%

# Information on the DAM/IDM participants

Number of the DAM/IDM participants who submitted orders on the DAM and the IDM during April 2022



Three new DAM/IDM participants were registered in April 2022. As of April 30, 2022, there were 555 agreements on participation in the DAM and the IDM. There are 36 electricity producers, 31 distribution system operators (DSO), 452 electricity suppliers, 29 traders, 5 consumers, the Transmission system operator and the Guaranteed Buyer are also among the participants of the DAM/IDM.

There were no suspensions of participation in the DAM and the IDM in April 2022.

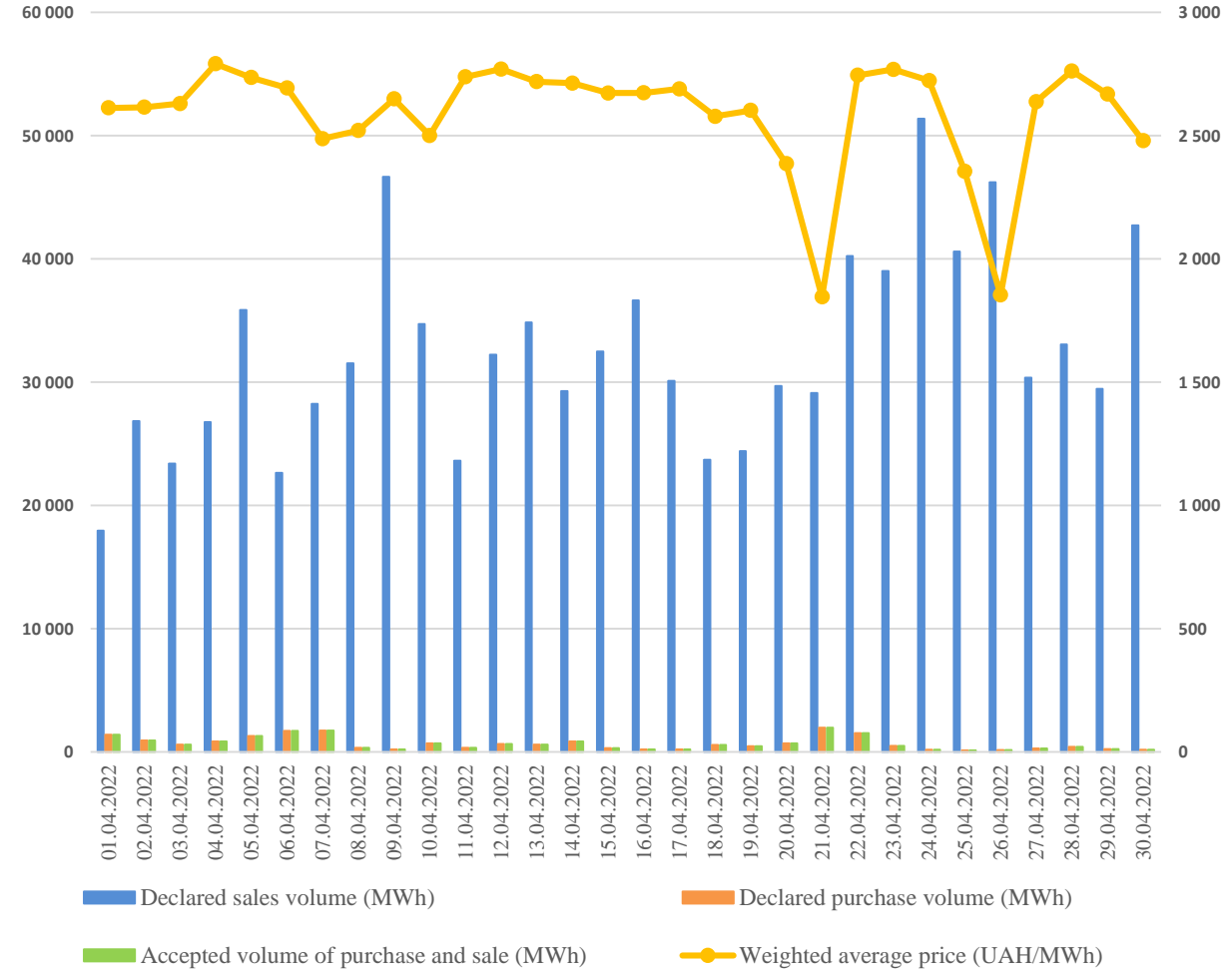
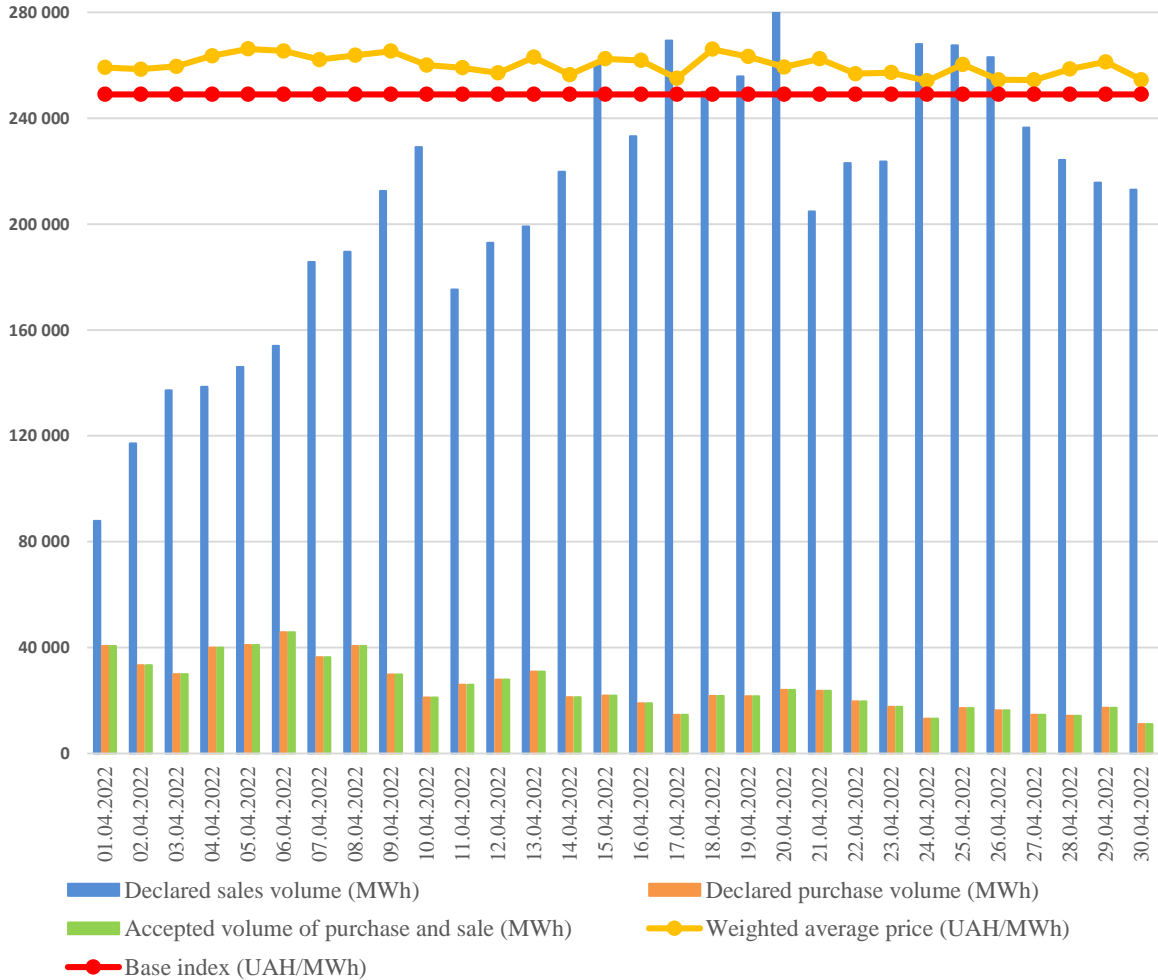
The participation of 1 participant in the DAM/IDM was terminated due to the termination of the agreement on the settlement of electricity imbalances with the Transmission system operator in April 2022.

# Orders.

## Consolidated orders for sale and purchase on the DAM and IDM

### Day-ahead market

### Intraday market



# Orders.

## Demand and supply on the DAM and IDM in the IPS of Ukraine

### Day-ahead market

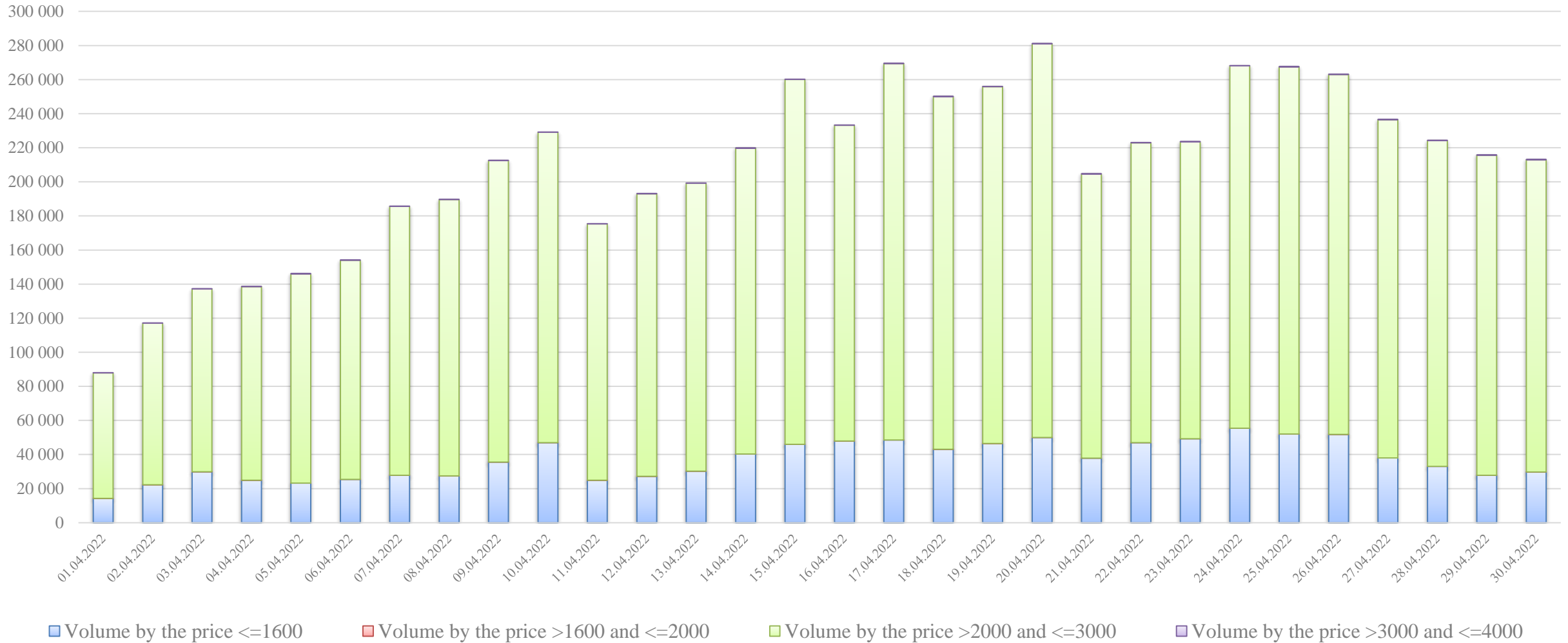
Дата	1	2	3	4	5	6	7	8	9	10	11	12	13	14	15	16	17	18	19	20	21	22	23	24
01.04.2022	453,1	583,1	648,0	722,7	629,2	449,7	32,3	2187,3	1931,0	2238,8	2938,3	3724,4	4279,1	4481,1	4376,6	3986,4	3358,5	2341,0	1773,8	1329,4	1235,9	1501,0	2005,0	101,2
02.04.2022	1473,4	1716,9	1689,1	1800,9	1822,1	1652,6	1443,1	3883,6	3803,8	4031,8	4611,3	5348,0	5661,2	5758,1	5764,6	5287,2	4894,3	4116,4	3475,2	3156,3	3168,0	3445,0	3985,2	1743,3
03.04.2022	2399,4	2805,4	2831,1	2978,5	2892,6	2894,6	2569,0	5771,2	5160,6	4942,5	5206,8	5689,0	6011,2	6187,0	6161,7	5804,4	5540,0	5180,1	4464,2	4271,7	4420,3	4834,8	5493,8	2700,7
04.04.2022	1663,5	2021,7	2085,2	2269,8	2185,9	2194,7	1784,0	5021,6	4632,5	4715,5	5466,7	6208,0	6626,9	6645,2	6468,8	6120,2	5635,7	4860,5	4050,5	3748,2	3677,5	4102,2	4824,6	1505,4
05.04.2022	1403,4	1725,7	1860,4	2020,6	2142,8	2229,8	1741,2	5442,6	5243,4	5452,3	6140,7	6641,2	6895,4	6876,1	6738,7	6432,6	5892,6	5027,6	4600,7	4524,6	4501,5	4746,1	5344,5	1396,7
06.04.2022	1654,9	1992,7	2104,8	2220,0	2405,3	2289,9	1549,9	5374,5	5157,2	5276,5	6192,0	6942,7	7467,9	7412,8	7236,4	6923,3	6244,7	5254,1	4544,8	4391,1	4357,2	4742,5	5289,7	1230,3
07.04.2022	1932,7	2548,2	2554,4	2565,2	2718,2	2573,5	2244,3	7490,3	7599,0	7709,2	8701,6	9562,6	10196,3	10243,1	10129,4	9648,3	8788,5	7594,0	6636,9	6348,2	6057,5	6397,2	7149,0	1849,4
08.04.2022	1782,5	2363,7	2538,9	2614,5	2683,9	2589,0	1814,7	7775,5	7603,1	7118,7	7882,9	8742,7	9449,4	9645,1	9808,9	9658,4	9382,7	8166,1	7424,6	7106,2	6648,5	6693,0	7814,4	1709,1
09.04.2022	2981,1	3744,9	3926,2	4107,8	4149,2	4161,9	3323,6	9517,1	9604,7	9183,4	9570,1	10216,7	10749,9	10877,5	10916,3	10662,3	10297,2	9424,4	8527,0	8423,3	8209,5	8342,7	9104,1	2703,4
10.04.2022	4510,1	5348,9	5805,6	5875,4	5797,6	5700,4	5054,4	10487,4	10648,2	10113,2	10605,4	11079,2	11276,0	11320,8	11330,9	11034,6	10862,0	10111,2	9376,8	9501,5	9392,9	9440,5	9857,5	3512,9
11.04.2022	2039,5	2221,9	2314,1	2392,2	2251,2	2502,7	2193,7	7787,7	7860,4	7615,4	7993,4	8740,1	8871,7	8806,6	8828,7	8695,5	8798,7	8488,3	7771,8	7806,7	7615,9	7611,8	8000,8	2191,5
12.04.2022	2337,6	2612,9	2727,5	2757,5	2596,4	2621,0	2057,8	8002,6	8540,7	8649,3	9561,6	10395,5	10729,4	10648,2	10500,6	10259,8	10096,8	9496,2	8119,7	7677,9	7293,1	7602,2	8039,7	1746,9
13.04.2022	2744,5	3086,0	3220,0	3228,8	2994,4	2963,8	2449,8	8306,8	8680,1	8222,2	8770,9	9648,4	10374,0	10296,6	10274,0	10242,5	10072,7	9536,0	8219,9	8076,4	7902,8	8165,0	8524,6	2222,2
14.04.2022	3513,2	4404,0	5106,9	5163,9	4854,9	4542,3	3832,6	9610,7	9550,6	9040,8	9888,6	11202,0	12532,8	12415,1	12299,2	12397,5	11839,8	10645,1	8684,0	8255,6	8043,4	8253,0	9557,1	2924,8
15.04.2022	4850,8	5396,9	5642,1	5592,4	5314,7	5189,1	4501,8	11921,0	12343,0	12244,3	12454,5	12801,2	14267,8	14185,5	14107,6	14073,7	13441,1	12755,4	10539,5	10501,3	10595,7	10485,3	10768,6	4323,0
16.04.2022	5045,3	5780,2	6027,3	6344,6	5748,7	5487,0	4750,6	12345,1	11263,7	9706,3	9802,0	10521,4	10734,8	11084,3	10806,7	10954,9	10884,8	10425,1	10131,4	10037,9	10482,3	11726,2	4135,5	3222,2
17.04.2022	5035,1	5657,2	5684,1	6287,8	5982,3	5373,3	4739,9	14390,8	14706,8	11952,0	12059,2	12432,4	12564,9	13271,0	13330,0	14910,6	14690,9	13602,2	12170,5	11836,4	11758,3	12522,0	14294,5	5086,8
18.04.2022	3996,7	4639,6	4742,2	5494,2	5193,1	4887,3	4469,8	10381,9	9723,1	9996,5	10761,3	11858,2	12340,3	12624,2	13406,3	13791,9	13811,1	12310,2	11889,1	11629,9	11002,7	13132,8	5529,0	5289,7
19.04.2022	4691,5	5153,8	5449,5	6029,1	5825,0	5258,1	4187,4	11612,8	11160,4	10572,3	11087,1	11676,1	11968,0	12112,9	12331,8	12624,7	13346,4	13386,3	11667,4	11753,4	12274,1	11773,1	13462,6	4859,3
20.04.2022	4882,1	5345,7	6234,0	6949,9	6759,9	5641,7	4465,6	12635,3	12222,3	11991,3	12497,1	13275,5	13915,1	13877,2	14225,5	14405,4	14360,0	14528,5	12952,9	13367,5	12987,8	12930,0	13126,9	3471,7
21.04.2022	3625,0	3800,6	4303,7	4721,1	4615,8	3858,7	3337,0	10077,6	9548,7	8711,7	8876,4	9180,9	9348,1	9487,7	9759,1	10501,3	10171,2	10632,0	8961,5	8610,6	7718,6	8020,2	9207,0	3985,2
22.04.2022	4746,9	4904,7	5552,7	6908,9	7077,1	5390,8	3484,6	10581,1	10182,2	9753,6	10326,3	10796,4	11324,7	11674,8	11675,0	12363,8	11178,9	10067,3	8810,9	8455,4	7692,8	7923,4	9090,4	3397,6
23.04.2022	4894,9	5347,0	6442,9	7216,4	7422,2	5951,3	4255,9	12409,1	11838,4	11302,8	10198,6	10073,8	10135,7	10376,0	10399,5	10654,8	10079,6	9350,9	8233,2	9544,3	8528,8	8820,1	9730,6	2870,0
24.04.2022	3824,4	5246,4	7053,5	9152,4	9181,6	8387,7	5258,2	15002,4	13399,9	13152,5	13407,4	13770,4	14595,8	14488,8	14087,9	13908,1	13512,0	11866,4	10332,7	10508,2	10685,3	10165,2	10584,4	3359,6
25.04.2022	4181,7	5643,2	7065,9	8693,8	8209,8	5953,1	4001,6	12988,9	14102,7	12742,3	12639,4	13467,4	13366,4	13568,2	13562,9	14535,2	14698,8	13582,1	10816,3	10724,1	10436,7	10291,3	11199,4	3894,4
26.04.2022	4486,0	5660,8	6025,2	7634,4	7199,0	6250,7	5695,6	14282,7	13823,1	13173,7	11999,7	13290,0	13710,4	13268,7	13455,0	13835,8	13601,6	12472,7	11391,7	9984,4	10299,1	9902,2	11263,6	4007,6
27.04.2022	5493,8	4727,5	3788,9	4105,9	3980,5	3799,7	3929,8	12867,9	13003,1	11791,1	12282,9	12592,6	12631,4	12485,7	12267,7	11927,7	11328,7	10798,2	11577,7	10658,5	10813,8	10267,1	10932,5	3821,4
28.04.2022	3813,4	3688,1	3529,6	3752,2	3805,9	3755,3	3451,6	11614,1	10981,2	11646,5	11406,6	11765,2	11680,7	11610,5	11387,0	11042,8	10623,5	10469,0	11353,8	11224,1	11607,9	11207,9	13492,3	3492,3
29.04.2022	2895,9	2943,6	2989,9	3037,4	2925,5	3013,9	2859,9	10487,3	10232,0	11948,9	11481,9	11748,9	11677,3	11505,7	11282,6	11064,1	10681,1	10314,5	10629,4	10846,7	10934,5	10561,6	10553,3	2894,2
30.04.2022	3274,8	3286,1	3281,1	3372,3	3370,2	3259,7	3375,4	9770,8	10502,4	11386,6	11939,6	12120,2	12112,1	12085,4	11866,3	11469,0	10888,3	10148,4	10541,3	10240,7	10436,5	10039,5	9900,7	3250,2

### Intraday market

Дата	1	2	3	4	5	6	7	8	9	10	11	12	13	14	15	16	17	18	19	20	21	22	23	24
01.04.2022	57,9	40	44,5	394,6	370,1	309,6	329,5	404,2	630	965,7	1454,9	1671,4	1458,2	1343,1	1357	1281,7	1122,6	801,4	457,4	427,1	430,5	395,7	454,7	343,9
02.04.2022	640,3	748,4	636,6	730	772,8	736,1	829,2	1179,3	1518,4	1807,1	2206,1	2022,6	1642,3	1425,5	1227,7	1098,3	992,2	966,8	867	862,9	881,6	733,7	754,9	637,9
03.04.2022	483	678	540,3	519,2	455,7	501,7	561,2	786,1	996,5	1328,3	1548,9	1760,6	1905,9	1880,7	1668,9	1473,1	1182	961,3	642	518,3	531,3	586,6	725,4	571,7
04.04.2022	601,2	745,8	653,3	669,7	687,9	707,4	647,3	1141,1	1105	1439,3	1958,5	1855,3	1487,8	1389,8	1317,9	1187,1	1124,3	1059,2	1021,9	1098,4	1088,7	1158,5	1189,6	586,6
05.04.2022	892,6	1035,5	874,5	923,9	980	1029,8	972,5	1512,7	1522,6	1785,6	2220,2	2033,7	1979,4	2030,1	1967,8	1863,1	1506,4	1306,9	1250,9	1514,6	1499,1	1514,4	1572,6	769,1
06.04.2022	522,3	581,1	489,7	481,6	492,1	403,9	419,6	1050,9	1130,8	1339,7	1361,3	1280,9	1402,2	1393,3	1265,5	1296,6	974,9	824,1	709,7	794	791,7	856,5	846,7	236
07.04.2022	704,6	882,6	752,7	804,5	797,8	866,7	840,5	1251,4	1175,8	972,2	1043,3	1163,7	1519,5	1618	1632,7	1590	1477,2	1144,7	1110,6	1002,2	920,1	1049	1342,5	854,3
08.04.2022	545,3	658,5	580	588,6	578,5	627,1	616,7	1326,7	1458,6	1814,2	2302,3	2280,4	2122,6	2141,2	2095	1969,2	1778,4	1582,2	1422,2	1193,6	1007,2	979,1	1149,5	854,3
09.04.2022	642,8	720,1	646,6	658,8	681,3	793,6	787,4	2287,5	2541,6	2891,1	3348,4	3573,1	3400,4	3236	3199,6	2799,5	2513	2149	1868,9	1788,7	1698,5	1740,2	644,7	
10.04.2022	697,2	690,2	710,3	746,1	709,2	748,5	685,9	1356	1587,5	2001,7	2446,5	2781,8	2694	2544,5	2541,4	2173,6	1936,1	1362,4	1025,2	894,1	892,9	936	1085,8	791,4
11.04.2022	288,5	297	303,9	308,2	296	327,7	315,1	739,8	788,2	1197,6	1608,4	1503,2	1445,1	1692,1	1794,4	1639,9	1664,9	1348,3	1196,3	1077,1	1073,3	1114	1061,7	199,8
12.04.2022	311,9	339,7	295	266,3	253,7																			

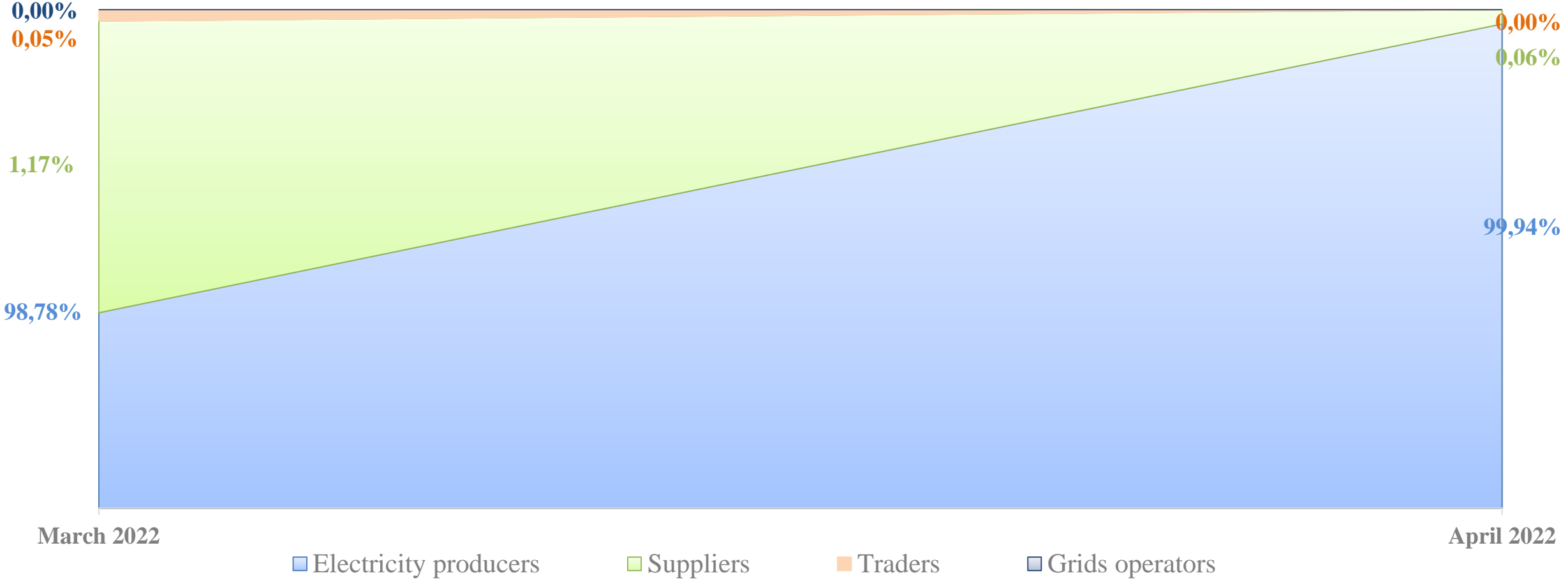
# Orders.

## DAM volumes of sale orders, ranking by the price in April 2022, MWh



# Orders.

## Comparison of the DAM sale orders structure

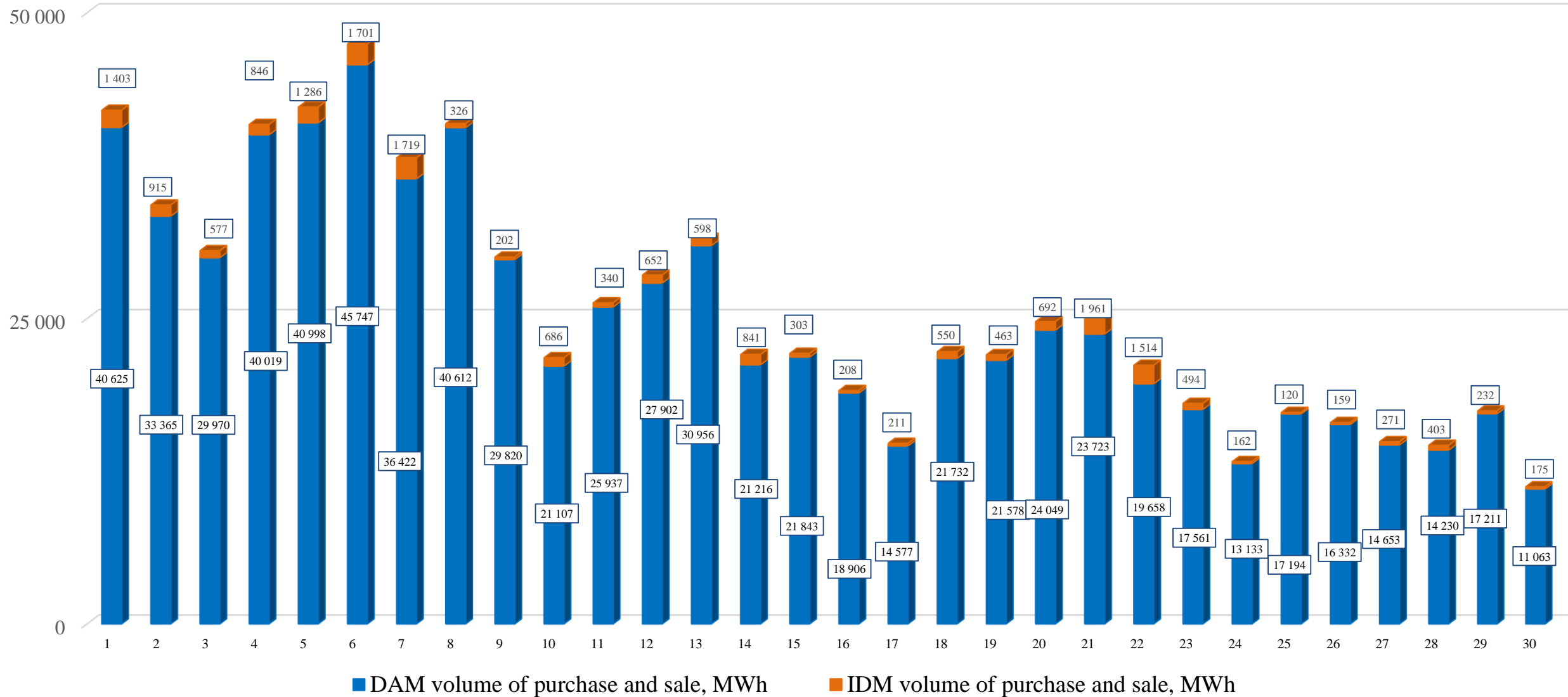


\* Guaranteed Buyers' declared sale volumes are included in the producers' declared sale volumes.

\*\*The amount of interest may differ from 100% due to rounding to 2 decimal places.



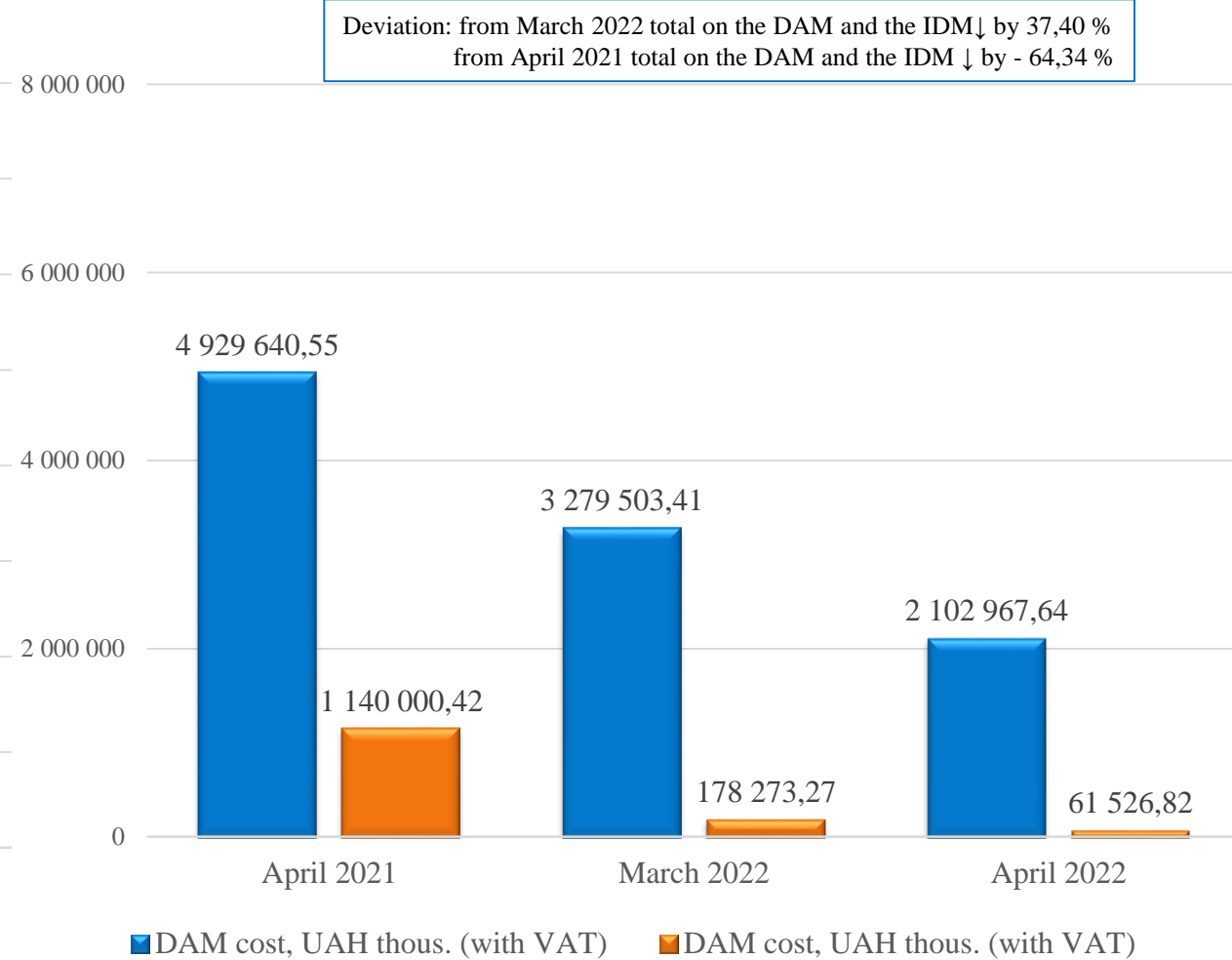
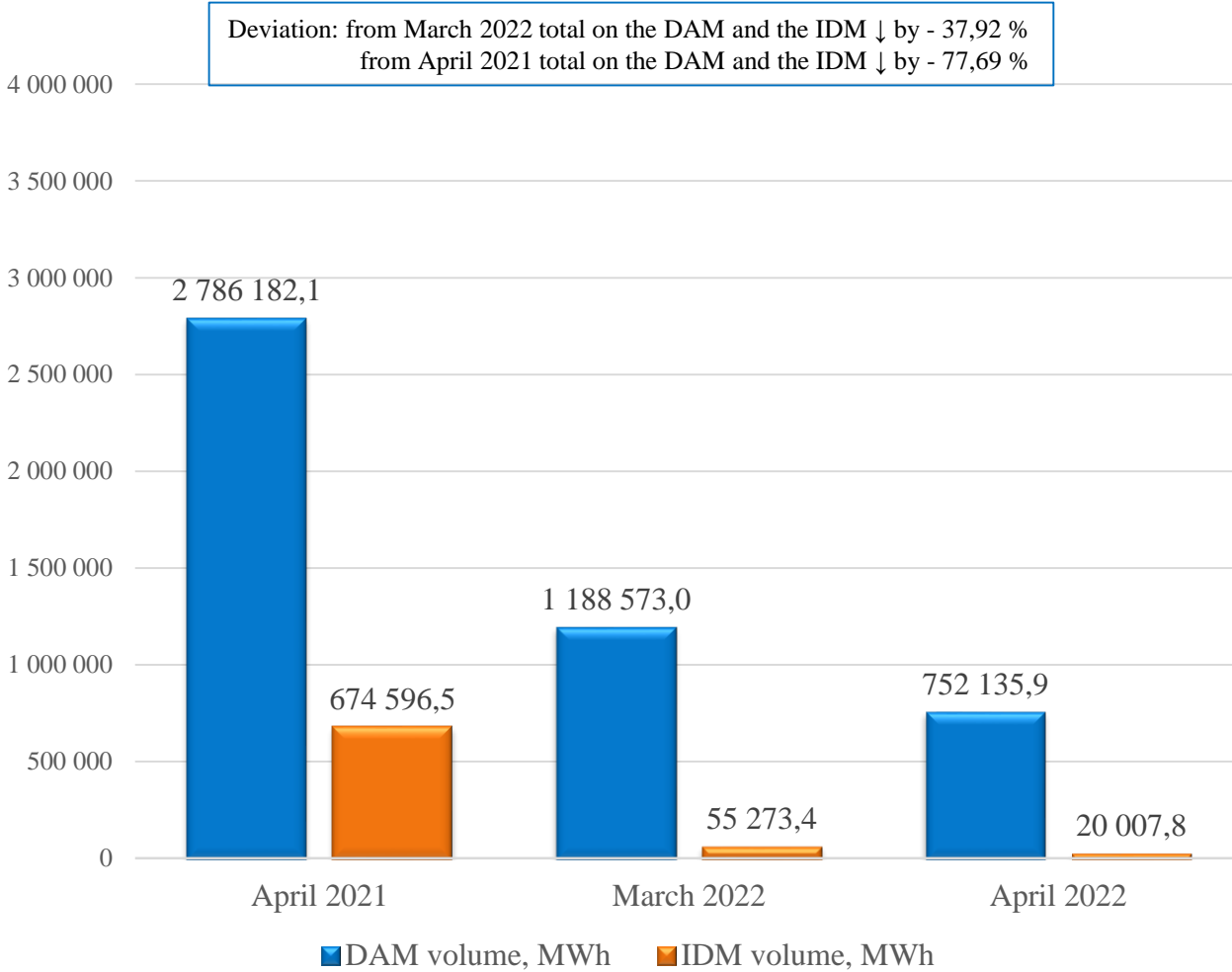
# Volume of trades on the DAM and the IDM in April 2022



# Comparison of volume and cost of electricity purchase and sale for April 2022, March 2022 and April 2021

## Volume of trades

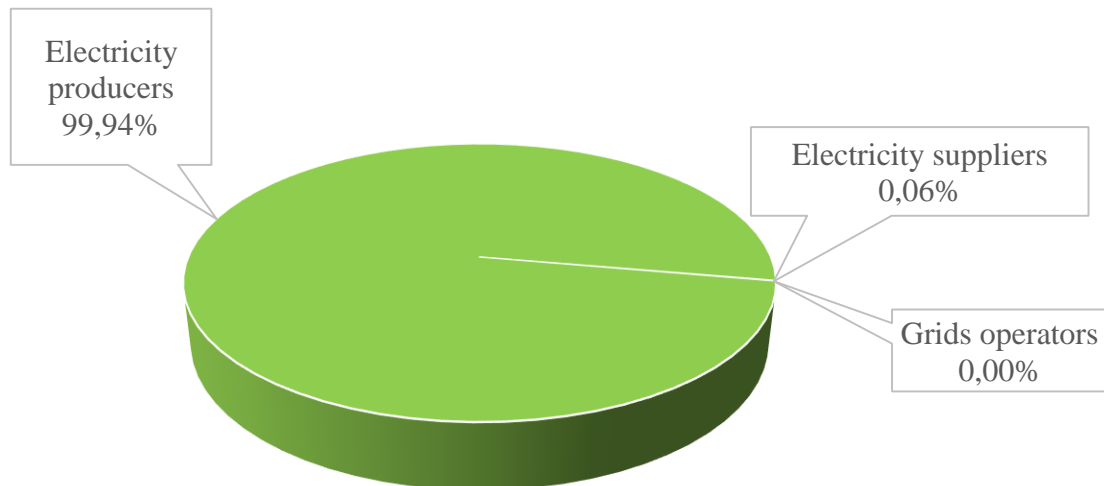
## Cost



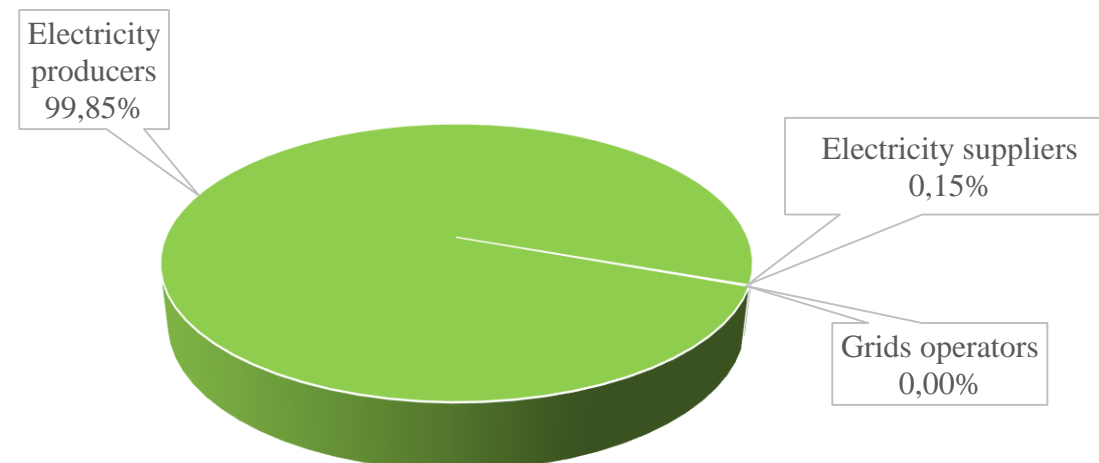
# Structure of DAM and IDM sale volumes for April 2022 by activity types,%

## Day-ahead market

### Declared volumes

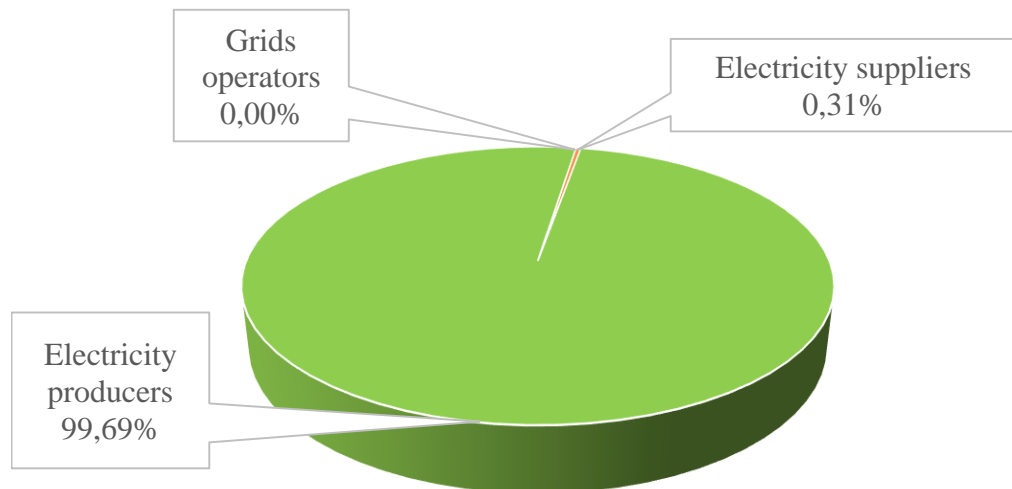


### Accepted volumes

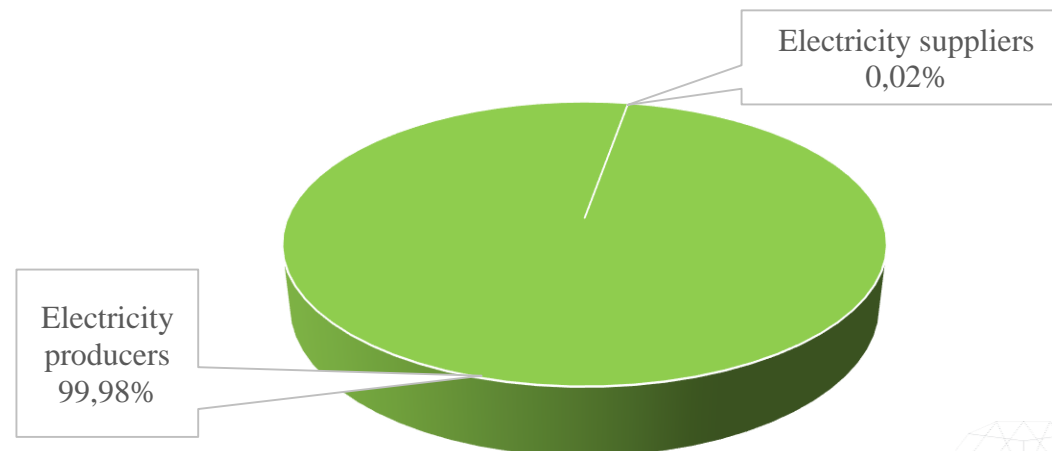


## Intraday market

### Declared volumes



### Accepted volumes

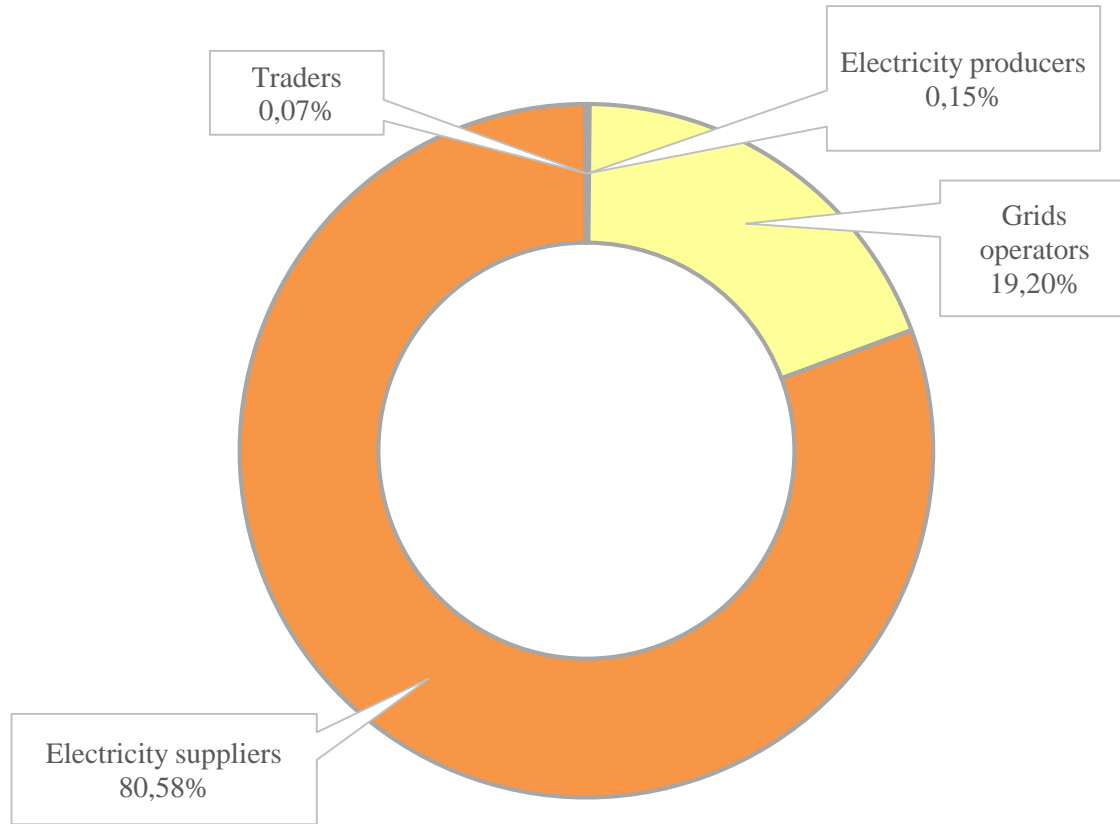


\*Guaranteed Buyers' declared sale volumes are included in the producers' declared sale volumes.

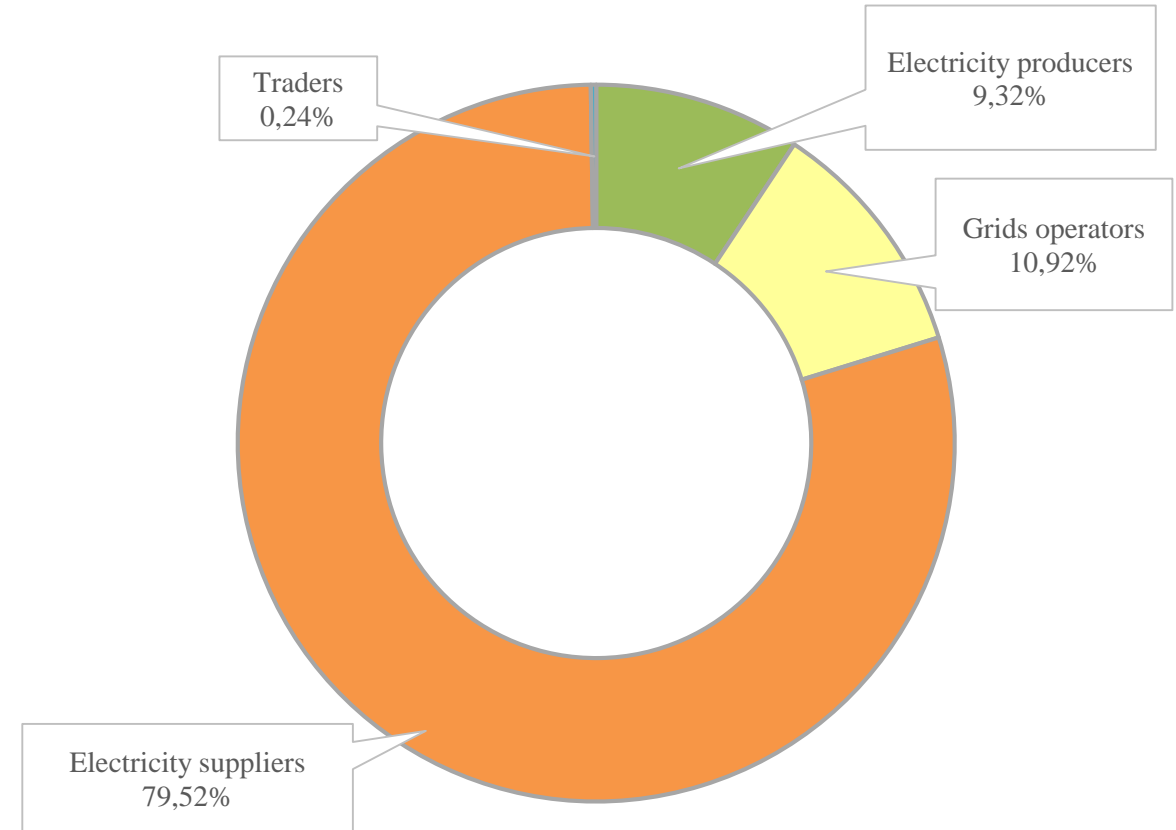
\*\*The amount of interest may differ from 100% due to rounding to 2 decimal places.

# Structure of DAM and IDM purchase volumes in April 2022, by activity types, %

## Day-ahead market



## Intraday market



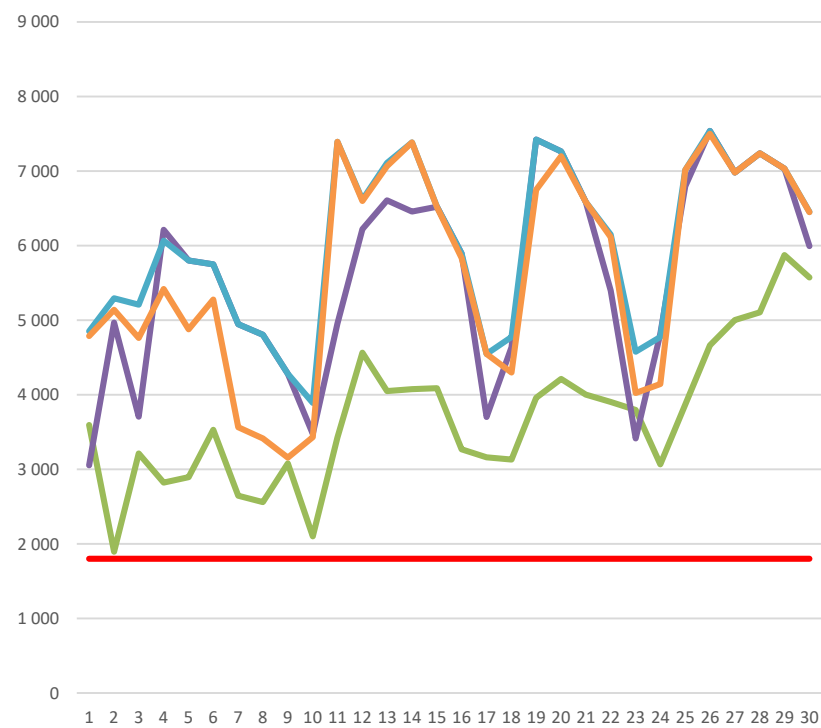
\* Guaranteed Buyers' declared sale volumes are included in the producers' declared sale volumes.

\*\* The amount of interest may differ from 100% due to rounding to 2 decimal places.

# DAM price indices.

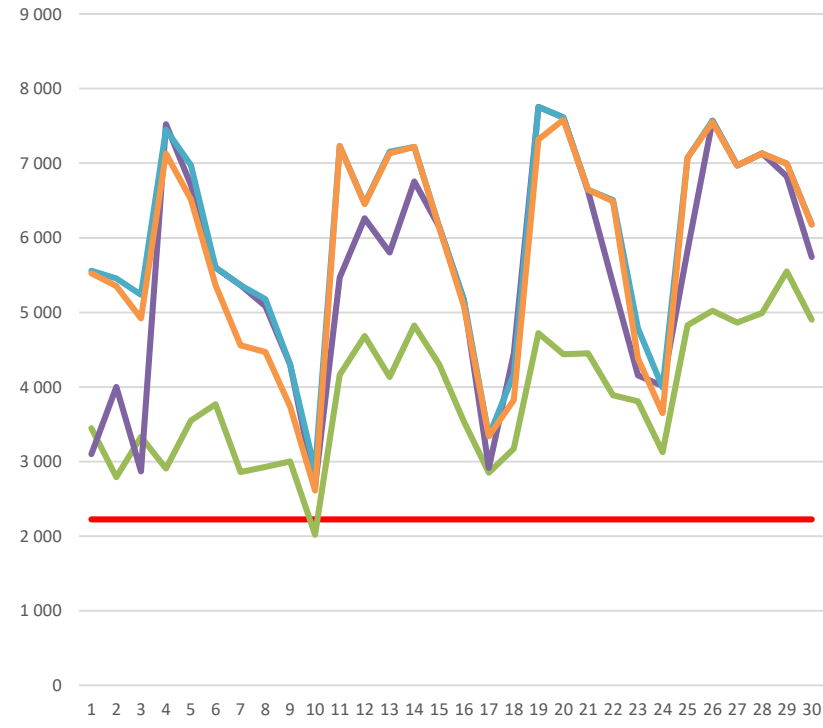
## Comparison with price indices of European countries for April 2022, UAH/MWh

### Period Off-peak



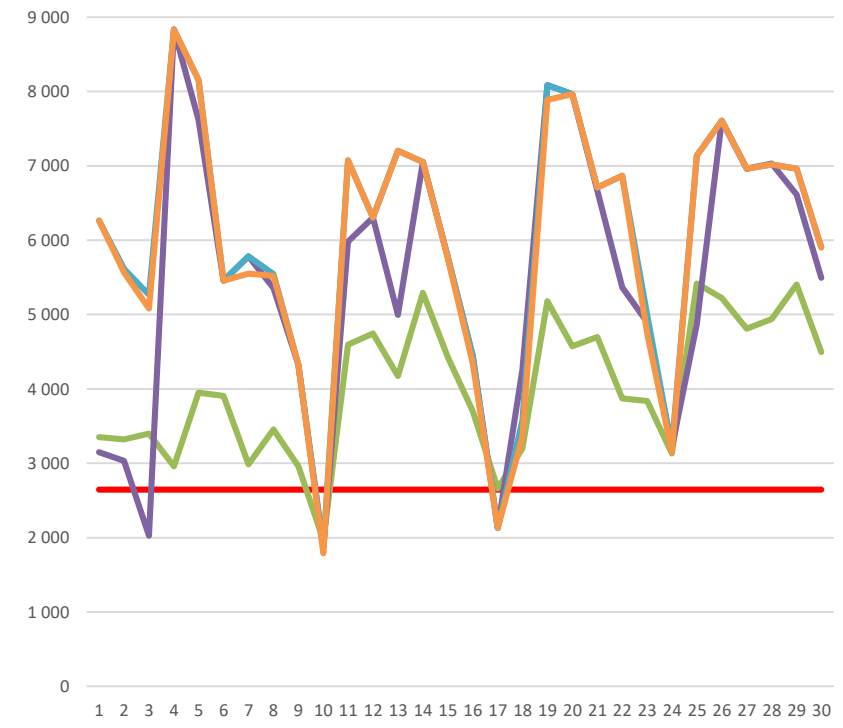
— Ukraine, IPS   
 — Poland   
 — Romania  
— Hungary   
 — Slovakia

### Period Base



— Ukraine, IPS   
 — Poland   
 — Romania  
— Hungary   
 — Slovakia

### Period Peak



— Ukraine, IPS   
 — Poland   
 — Romania  
— Hungary   
 — Slovakia

# Prices. Comparison with prices in Europe for April 2022

IPS	DAM		Comparison with other countries							
		IPS	PL	IPS/PL	RO	IPS/RO	HU	IPS/HU	SK	IPS/SK
Prices:										
BASE	UAH/MWh	2 223,82	3 895,37	▼ -42,9%	5 526,71	▼ -59,8%	6 003,36	▼ -63,0%	5 818,82	▼ -61,8%
PEAK	UAH/MWh	2 646,25	4 021,05	▼ -34,2%	5 438,33	▼ -51,3%	6 002,25	▼ -55,9%	5 955,64	▼ -55,6%
OFFPEAK	UAH/MWh	1 801,40	3 703,69	▼ -51,4%	5 615,10	▼ -67,9%	6 004,51	▼ -70,0%	5 682,01	▼ -68,3%

The DAM average prices in April 2022 remain lower than the corresponding figures of neighboring countries by 42,9%-63,0%.

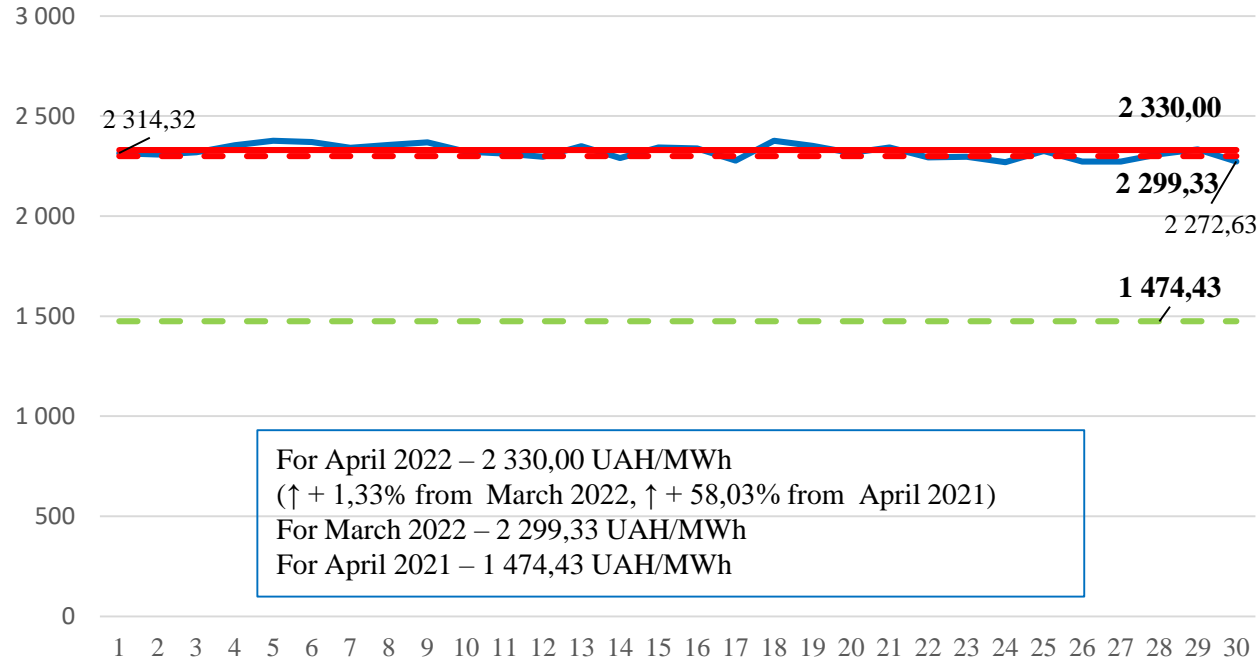
	IDM		Comparison with other countries			
		IPS	SK	IPS/SK	CZ	IPS/CZ
Price:						
Weighted average	UAH/MWh	2 562,62	5 516,37	▼ -53,5%	5 646,46	▼ -54,6%

The IDM weighted average prices in April 2022 are lower than the corresponding figures of the European countries by 53,5%-54,6%.

# Prices.

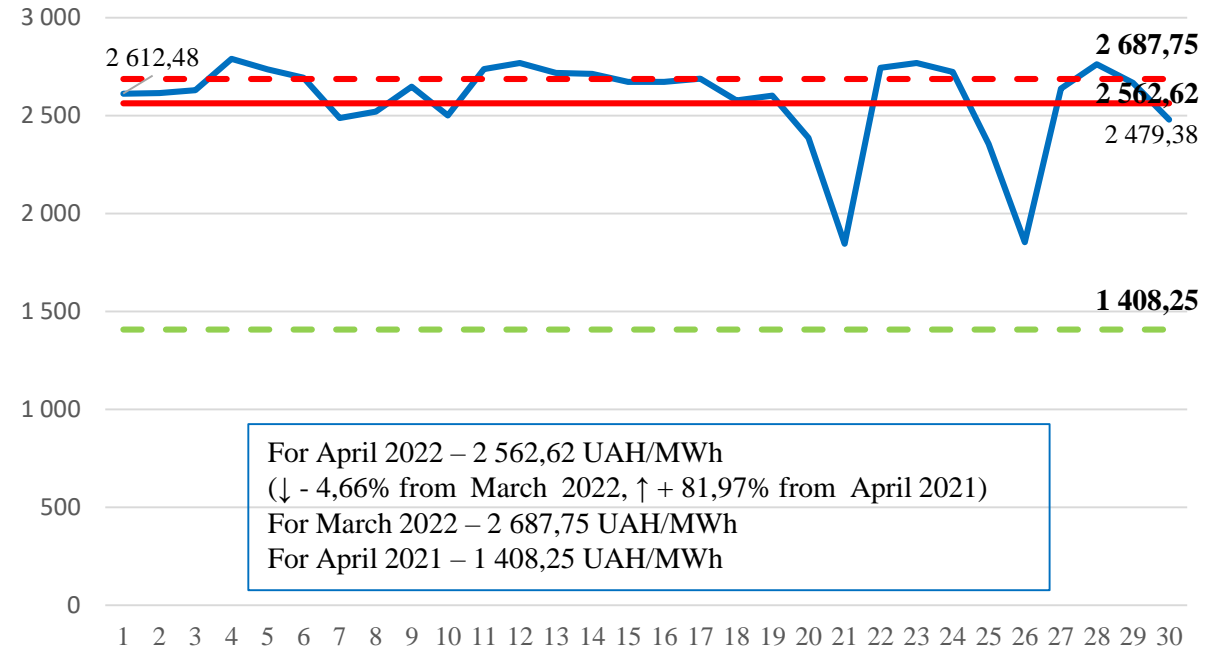
## Weighted average prices of electricity purchase and sale

### Day-ahead market



- DAM weighted average price, UAH/MWh
- DAM weighted average price for April 2022, UAH/MWh
- - - DAM weighted average price for March 2022, UAH/MWh
- - - DAM weighted average price for April 2021, UAH/MWh

### Intraday market



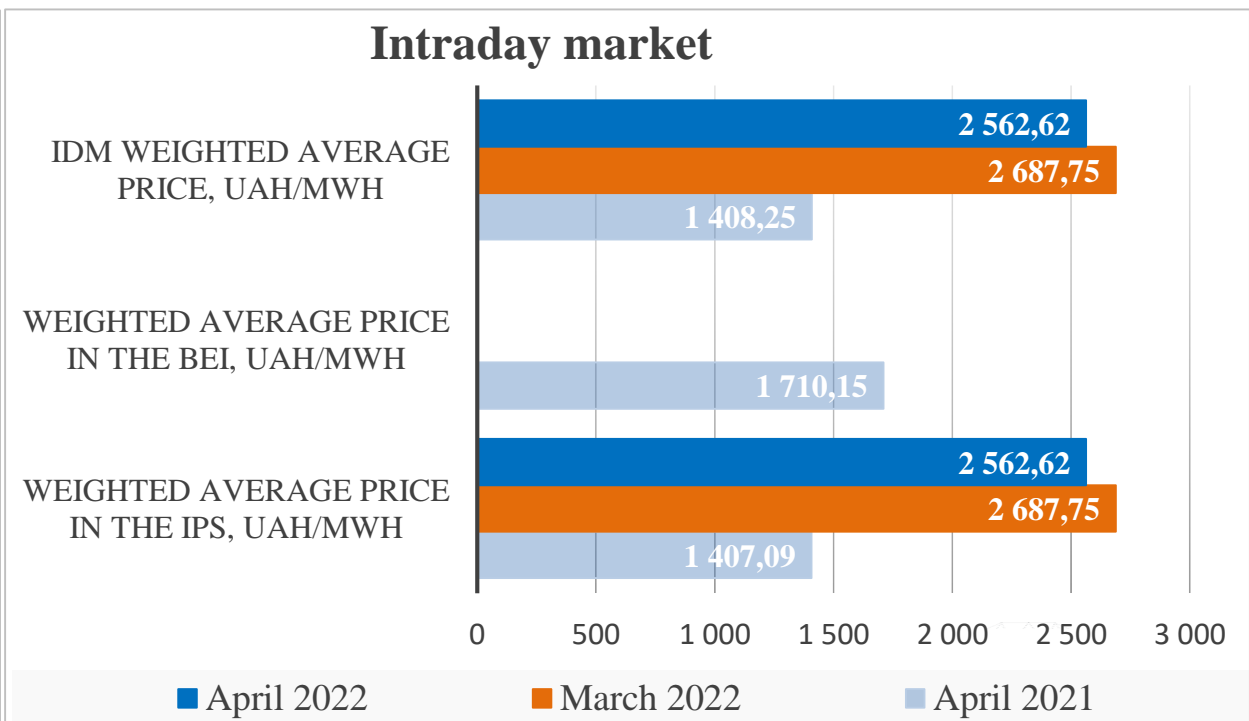
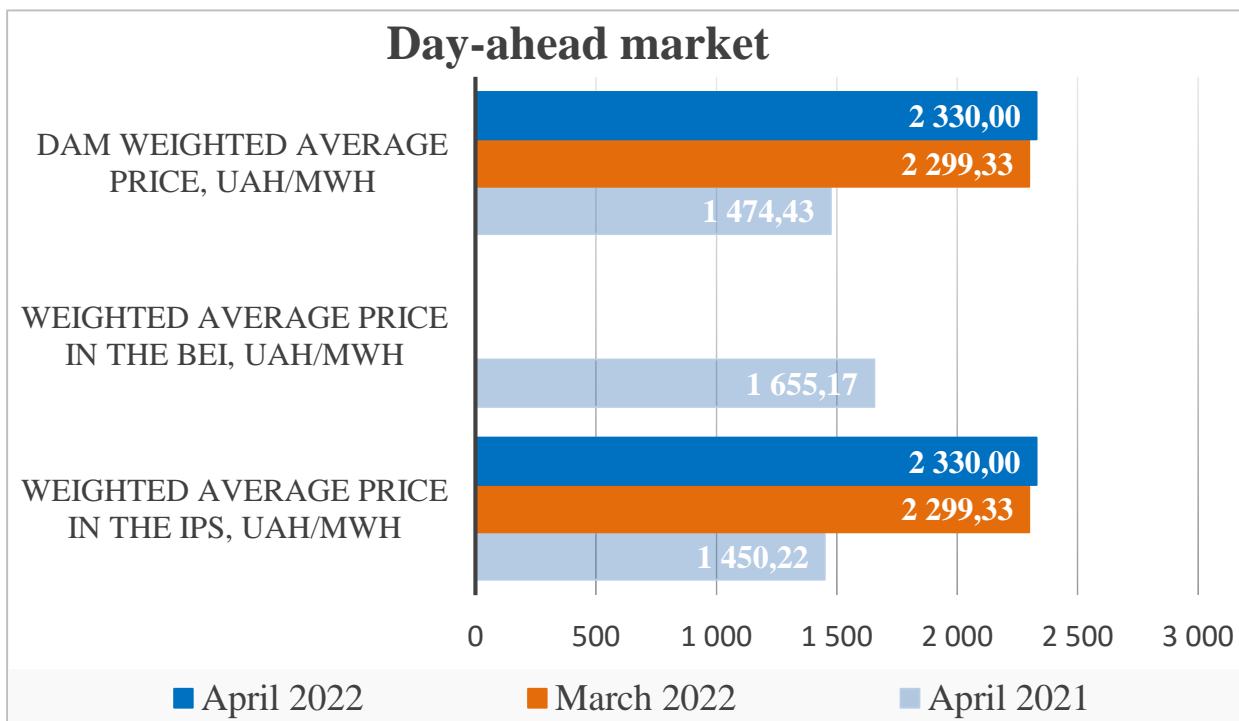
- IDM weighted average price, UAH/MWh
- IDM weighted average price for April 2022, UAH/MWh
- - - IDM weighted average price for March 2022, UAH/MWh
- - - IDM weighted average price for April 2021, UAH/MWh

\* - All prices are net of VAT

# Decade analysis of DAM and IDM weighted average prices for April 2022

Indicator	April 1 decade (01.04-10.04)	April 2 decade (11.04-20.04)	Зміна,%	April 3 decade (21.04-30.04)	Зміна,%
DAM weighted average price, UAH/MWh	2 345,05	2 326,21	↓ - 0,80%	2 302,47	↓ - 1,02%
IDM weighted average price, UAH/MWh	2 627,58	2 645,49	↑ + 0,68%	2 375,05	↓ - 10,22%

## Comparison of DAM and IDM weighted average prices for April 2022, March 2022 and April 2021



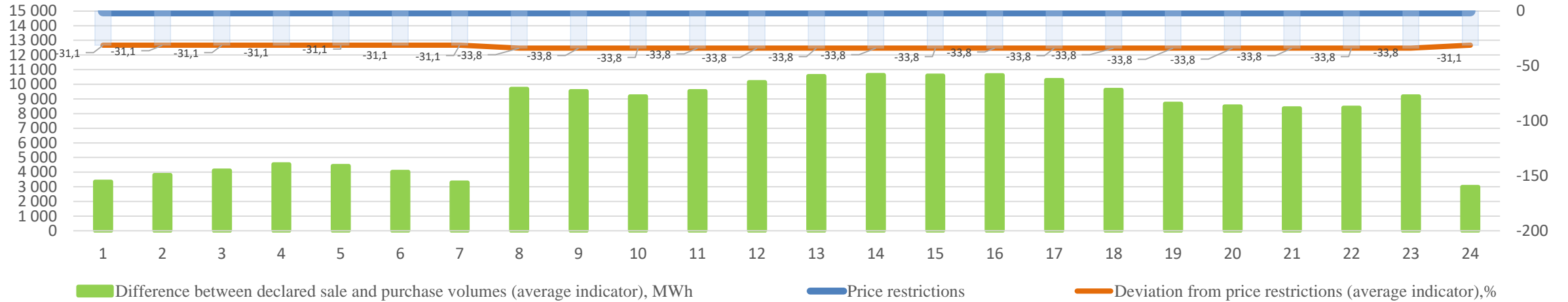
\* - All prices are net of VAT



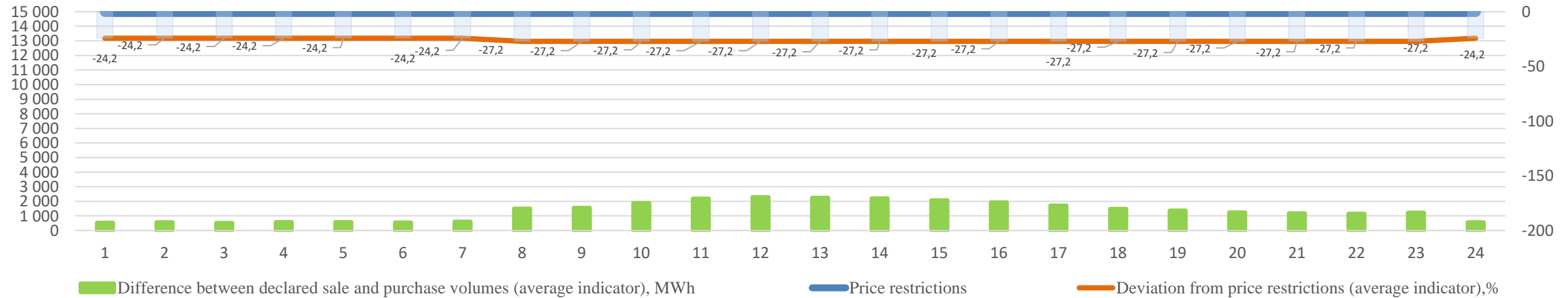
# Prices.

## Deviation of average hourly prices from price restrictions in April 2022

### Deviation of average hourly prices from price restrictions on the DAM

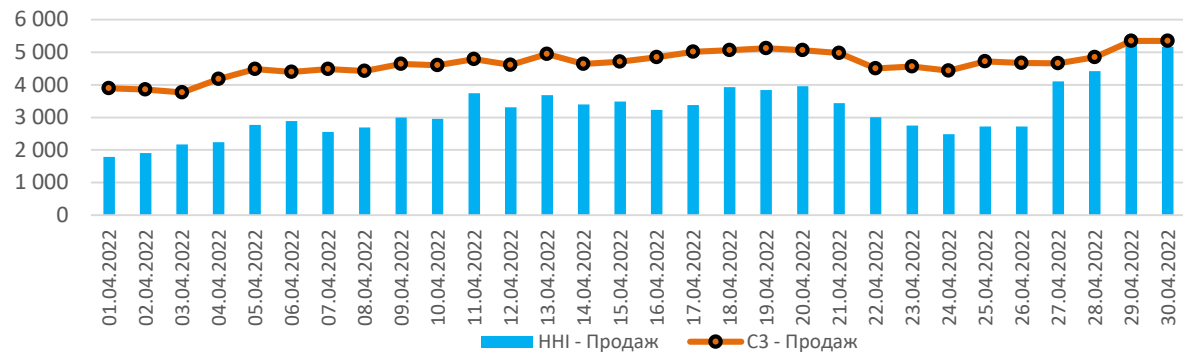


### Deviation of average hourly prices from price restrictions on the IDM

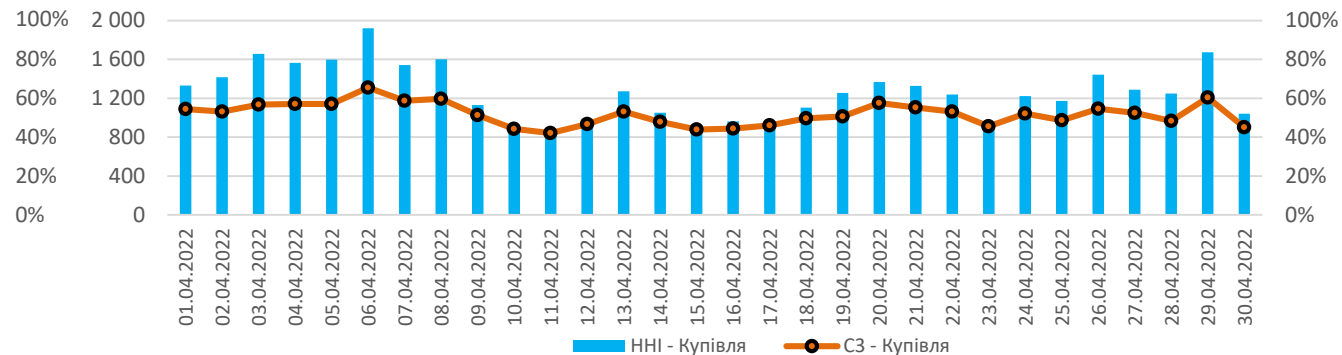


# Herfindahl-Hirschman Index (HHI) and Market Concentration Ratio (C3)

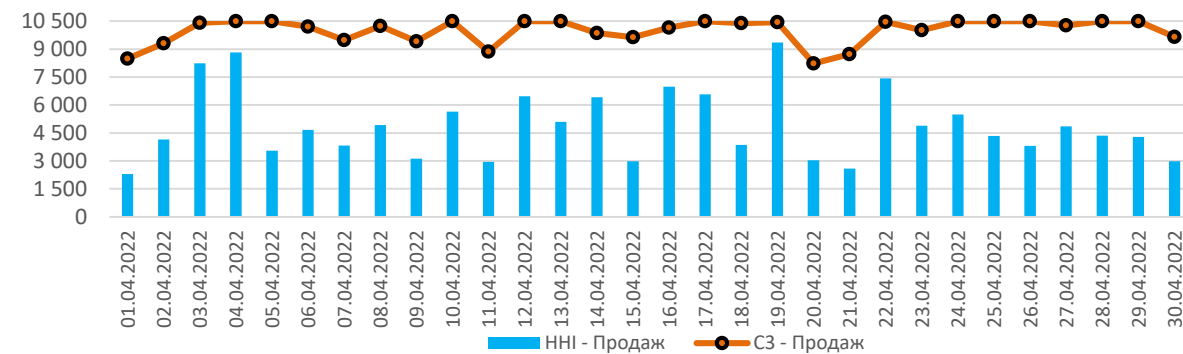
Market concentration indices (DAM, IPS, sale)



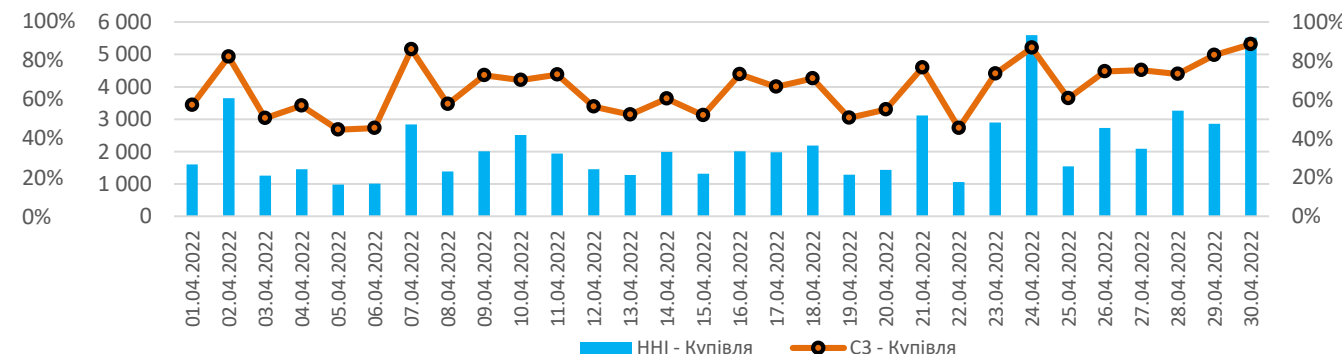
Market concentration indices (DAM, IPS, purchase)



Market concentration indices (IDM, IPS, sale)



Market concentration indices (IDM, IPS, purchase)



Indicator	Concentration		
	Low	Average	High
Market Concentration Index (C3)	less 45 %	45% - 70%	70% - 100%
Herfindahl-Hirschman Index (HHI)	less 1 000	1 000 – 1 800	1 800

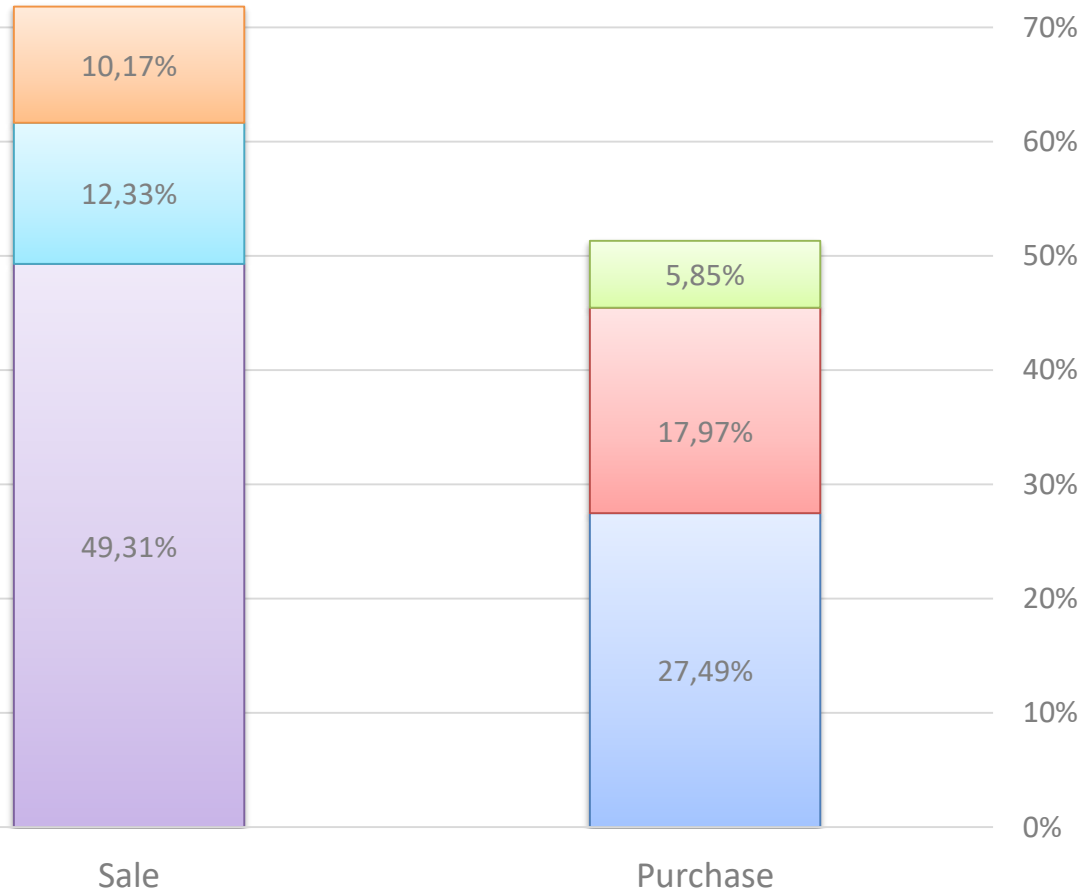
**The Herfindahl-Hirschman Index (HHI)** is the sum of the market share squares of the participants during the purchase/sale transactions. Competition reacts to the share of each market participant during the analysis takes place. The higher the Herfindahl-Hirschman index is (higher concentration), the weaker the competition in the market.

**The Market Concentration Ratio (C3)** represents the percentage of the market share of the top three participants with the highest purchase/sale volumes. The higher the indicator is, the higher market concentration and the weaker the competition are.



# Share in the volume of purchase and sale of the three largest DAM and IDM participants

## Day-ahead market (DAM, IPS)



## Intraday market (IDM, IPS)

