



# Analysis of the day-ahead market and the intraday market for March 2022

*Market Surveillance Department  
Surveillance division  
08.04.2022*

# THE MAIN INDICATORS OF DAM AND IDM



# The main indicators of DAM and IDM for March 2022

## DAY-AHEAD MARKET

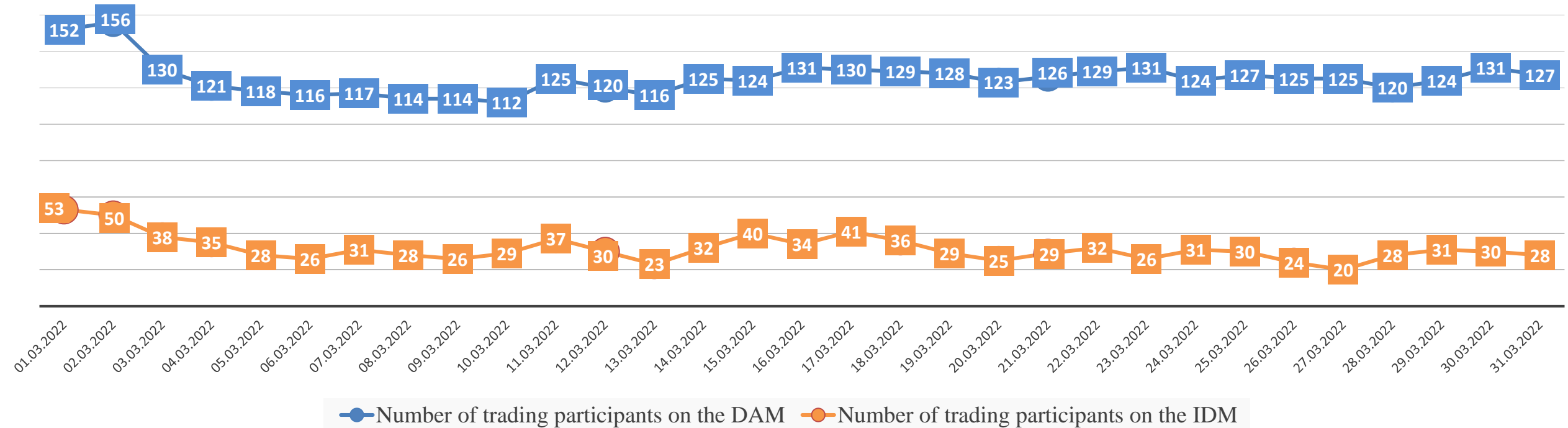
Indicator	March 2022	February 2022	Change,%	March 2021	Change,%
Base index (IPS), UAH/MWh	2 225,01	1 973,54	↑ + 12,74%	1 316,42	↑ + 69,02%
Peak index (IPS), UAH/MWh	2 646,25	2 532,77	↑ + 4,48%	1 457,54	↑ + 81,56%
Off-peak index (IPS), UAH/MWh	1 802,64	1 414,31	↑ + 27,46%	1 175,67	↑ + 53,33%
Base index (BEI), UAH/MWh	-	2 523,55	-	1 612,30	-
Peak index (BEI), UAH/MWh	-	2 960,58	-	1 912,39	-
Off-peak index (BEI), UAH/MWh	-	2 086,51	-	1 311,74	-
DAM weighted average price, UAH/MWh	2 299,33	2 182,82	↑ + 5,34%	1 406,25	↑ + 63,51%
DAM weighted average price (IPS), UAH/MWh	2 299,33	2 127,23	↑ + 8,09%	1 374,25	↑ + 67,31%
DAM weighted average price (BEI), UAH/MWh	-	2 572,28	-	1 644,82	-
DAM volume of purchase and sale, MWh	1 188 573,0	3 553 640,5	↓ - 66,55%	3 215 611,3	↓ - 63,04%
DAM volume of purchase and sale (IPS), MWh	1 188 573,0	3 109 733,6	↓ - 61,78%	2 835 301,8	↓ - 58,08%
DAM volume of purchase and sale (BEI), MWh	-	443 906,9	-	380 309,5	-
DAM average daily volume of trades, MWh	38 341,1	126 915,7	↓ - 69,79%	103 729,4	↓ - 63,04%

## INTRADAY MARKET

Indicator	March 2022	February 2022	Change,%	March 2021	Change,%
IDM weighted average price, UAH/MWh	2 687,75	2 206,63	↑ + 21,80%	1 360,47	↑ + 97,56%
IDM weighted average price (IPS), UAH/MWh	2 687,75	2 206,12	↑ + 21,83%	1 359,04	↑ + 97,77%
IDM weighted average price (BEI), UAH/MWh	-	2 493,03	-	1 591,13	-
IDM volume of purchase and sale, MWh	55 273,4	1 251 768,8	↓ - 95,58%	848 485,5	↓ - 93,49%
IDM volume of purchase and sale (IPS), MWh	55 273,4	1 249 567,2	↓ - 95,58%	843 248,0	↓ - 93,45%
IDM volume of purchase and sale (BEI), MWh	-	2 201,6	-	5 237,5	-
IDM average daily volume of trades, MWh	1 783,0	44 706,0	↓ - 96,01%	27 370,5	↓ - 93,49%

# Information on the DAM/IDM participants

Number of the DAM/IDM participants who submitted orders on the DAM and the IDM during March 2022



There were no new members on the DAM/IDM in March 2022. As of March 31, 2022, there were 553 agreements on participation in the DAM and the IDM. There are 36 electricity producers, 31 distribution system operators, 450 electricity suppliers, 29 traders, 5 consumers, the Transmission system operator and the Guaranteed Buyer among the participants of the DAM/IDM.

There were no suspensions of participation in the DAM and the IDM in March 2022.

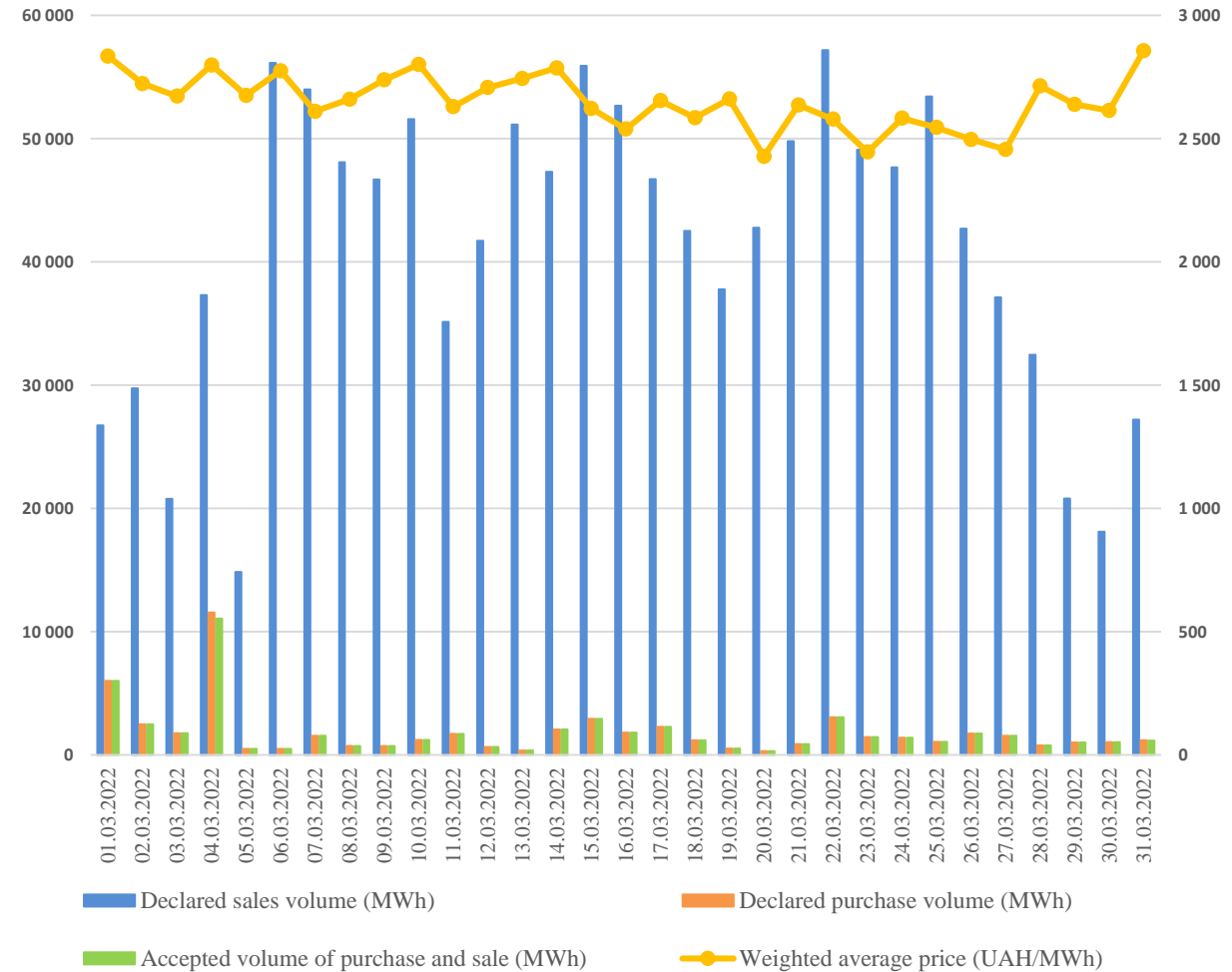
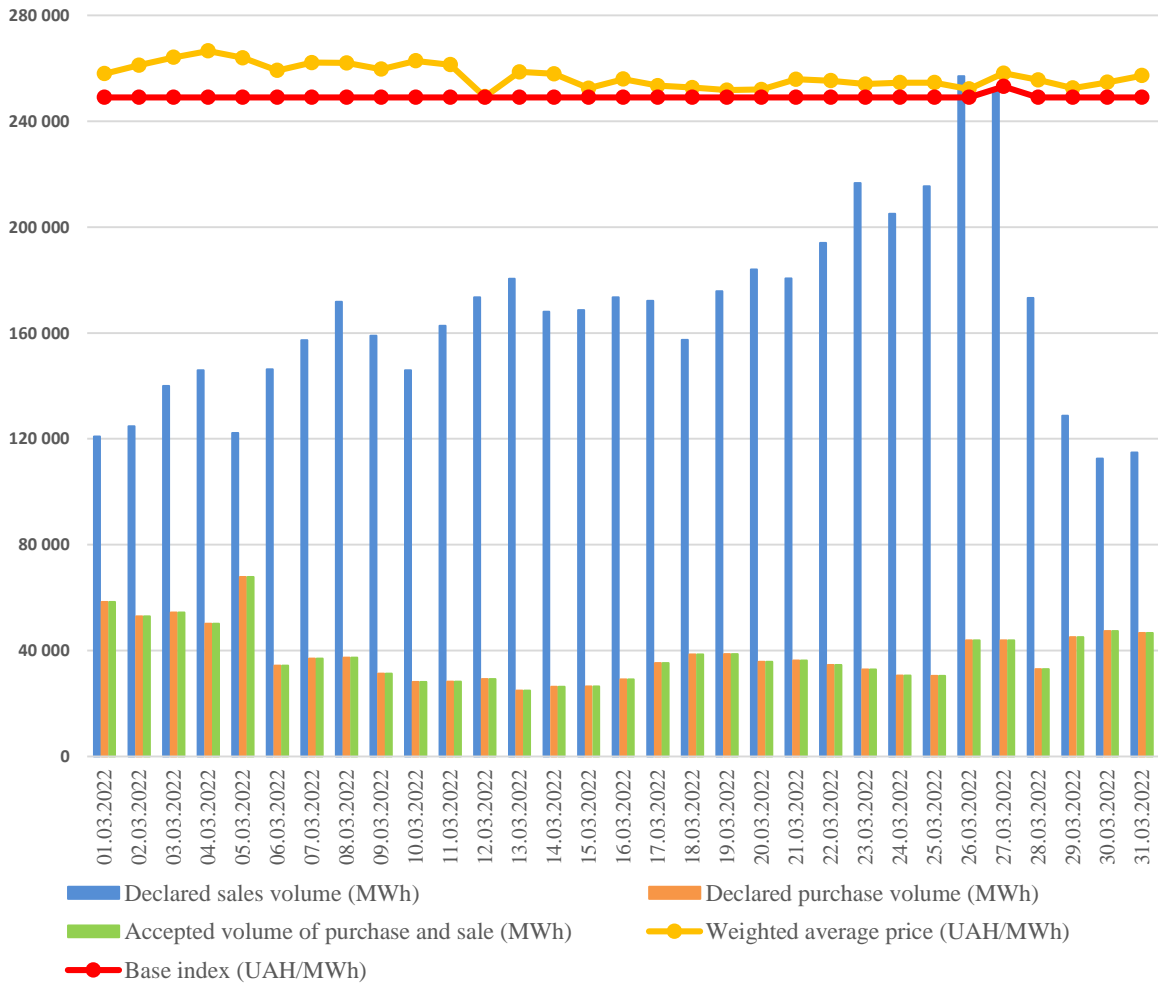
The participation of 1 participant in the DAM/IDM was terminated due to the termination of the agreement on the settlement of electricity imbalances with the Transmission system operator in March 2022.

# Orders.

## Consolidated orders for sale and purchase on the DAM and IDM

### Day-ahead market

### Intraday market



# Orders.

## Demand and supply on the DAM and IDM

### Day-ahead market

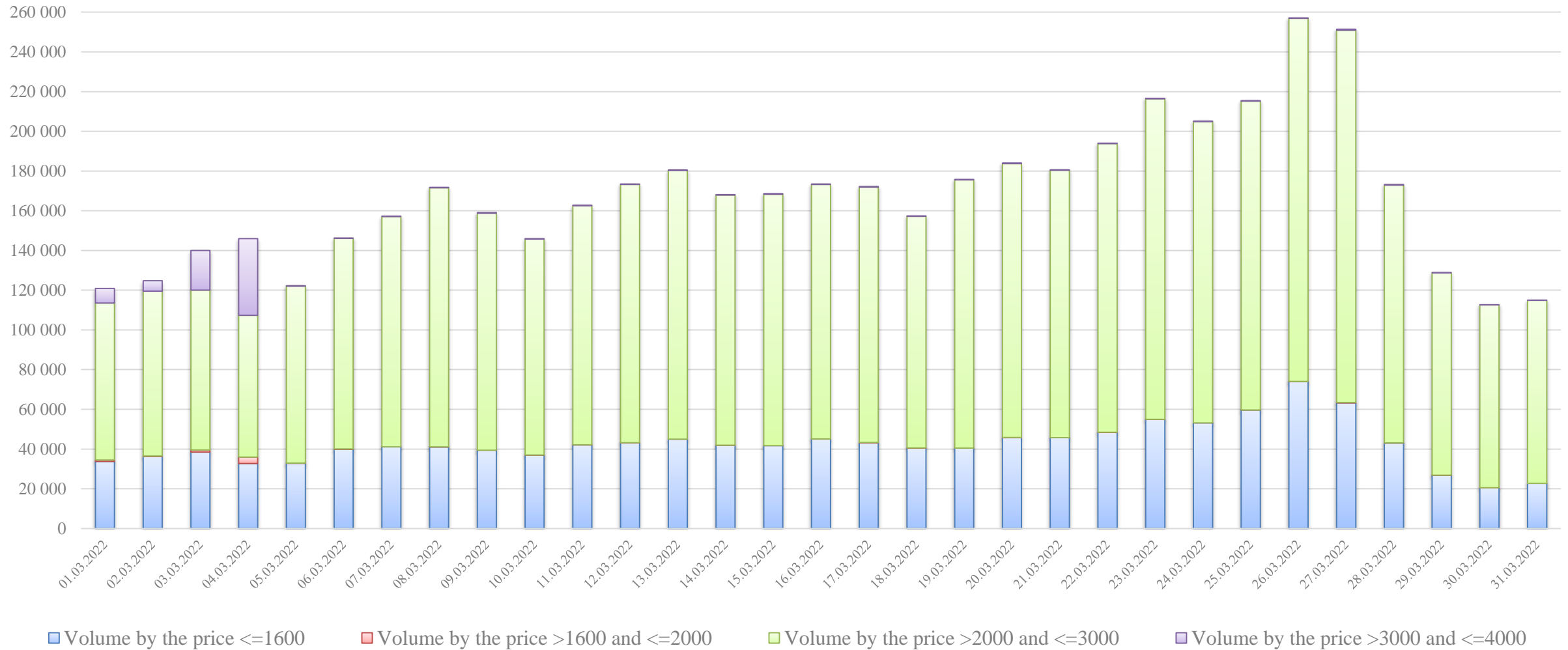
Дата	1	2	3	4	5	6	7	8	9	10	11	12	13	14	15	16	17	18	19	20	21	22	23	24
01.03.2022	1864,9	2286,3	2695,2	2766,1	2723,6	2446,0	1868,8	2627,6	2254,0	2237,7	2701,5	3028,6	3199,9	3247,3	3342,3	3285,3	2786,5	2406,0	2002,6	2145,3	2464,6	2733,8	3279,0	2016,3
02.03.2022	2297,3	2991,9	3127,1	3307,0	3351,2	3164,8	2544,0	3098,3	2624,2	2768,2	3224,0	3550,8	3731,0	3828,0	3838,9	3577,3	3022,3	2560,3	2167,6	2362,5	2657,7	2949,8	2521,0	2597,2
03.03.2022	3364,9	3613,5	3537,0	3612,7	3565,5	3363,4	2938,0	3871,2	3544,7	3582,8	3716,5	4164,4	4219,0	4269,7	4136,9	4044,6	3541,0	3002,6	2631,9	2842,9	3168,2	3556,2	4116,4	3184,4
04.03.2022	2390,0	3025,6	3270,2	3492,7	3548,7	3490,1	3109,9	4608,1	4582,0	4629,3	4800,9	5066,9	4970,9	4912,5	4778,4	4607,3	4122,7	3538,8	3190,2	3420,2	3886,3	4298,0	4855,7	3143,9
05.03.2022	1570,5	2037,8	2384,1	2618,1	2673,1	2485,9	2128,6	2944,3	2691,0	2697,2	2868,1	3053,9	3036,0	2847,8	2537,6	2412,1	2066,4	1648,9	1237,5	1179,1	1421,5	1895,8	2470,1	1470,0
06.03.2022	3476,2	3828,2	3895,5	4031,4	4097,1	4072,0	3992,8	5151,6	5264,1	5859,3	6071,1	6195,7	6158,4	6014,2	5606,7	5085,8	4581,1	4143,2	3834,4	3964,0	4070,9	4270,4	4638,8	3656,2
07.03.2022	3859,2	4119,7	4041,8	4132,1	4115,4	4059,7	3982,6	5716,5	5835,8	6147,2	6221,6	6201,8	6166,9	6013,9	5775,5	5425,6	5181,8	4818,0	4662,0	4707,8	4835,8	5085,2	5398,9	3900,1
08.03.2022	3512,7	3779,1	3849,0	3997,1	4096,1	4178,7	4264,7	6364,0	6532,6	6846,2	7264,8	7409,2	7516,8	7272,5	7060,4	6500,7	6136,6	5449,3	5346,6	5334,0	5573,1	5696,9	6130,5	4380,9
09.03.2022	3493,3	3807,1	3877,9	4039,0	4093,4	4029,2	3980,3	5947,3	6064,4	6387,8	6663,1	6807,0	6970,2	6860,8	6617,3	6165,7	5789,7	5256,5	5070,5	5141,7	5271,8	5517,4	4067,9	4679,8
10.03.2022	3220,2	3446,1	3653,4	3807,1	3943,7	3944,2	3975,7	4963,4	5307,7	5768,5	6164,1	6358,6	6365,3	6306,5	6054,7	5613,8	5281,0	4950,3	4849,6	4768,9	4783,5	4924,9	4371,4	4812,5
11.03.2022	3871,4	4181,5	4258,3	4316,2	4468,3	4540,8	4578,1	5874,3	6173,6	6759,4	7189,5	7391,0	7411,6	7292,4	6953,3	6521,9	6026,1	5440,3	5206,8	5063,4	5131,8	5322,6	5602,8	4954,8
12.03.2022	3833,3	4125,4	4026,0	4041,7	4082,1	4088,0	4205,4	6017,6	7013,0	7869,7	8504,8	8784,8	8931,4	8716,0	8177,6	7307,2	6442,4	5584,5	5314,7	5284,3	5306,1	5576,2	5876,1	5149,6
13.03.2022	4362,0	4618,7	4580,4	4713,0	4894,8	4968,6	4999,1	6663,7	7408,8	8079,7	8733,2	8904,8	8750,0	8454,3	7973,9	7381,6	6728,1	6395,6	6170,3	6184,5	6285,3	6531,7	6546,6	5272,8
14.03.2022	3826,0	4104,8	4136,8	4434,6	4568,9	4508,5	4446,9	6069,9	7023,6	7927,6	8650,8	8796,4	8419,5	8213,4	7712,5	7043,7	6165,4	5325,2	4973,6	4971,2	5067,7	5210,6	5426,6	4802,9
15.03.2022	4210,0	4278,6	4107,7	4184,0	4178,1	4079,5	4110,4	6199,5	7170,1	7893,0	8545,0	8816,4	8796,6	8605,0	8046,6	7282,1	6243,7	5278,3	4905,8	4903,5	5098,2	5235,3	5543,8	4466,6
16.03.2022	4393,5	4637,3	4562,4	4645,8	4678,4	4598,3	4576,2	6227,6	6822,9	7563,3	8158,2	8279,6	8279,6	8604,4	8070,0	7336,8	6529,4	4958,6	4987,3	5102,4	5226,9	5569,4	4774,7	4679,8
17.03.2022	4017,4	4155,9	4100,8	4125,0	4126,2	3997,8	3978,5	6004,0	6807,0	7468,5	8109,8	8493,3	8622,1	8481,9	7950,0	7175,5	6128,3	4640,4	4601,4	4748,0	4917,5	5057,1	4099,0	4679,8
18.03.2022	3394,2	3646,5	3623,0	3672,8	3677,0	3585,2	3529,3	5176,1	5890,4	6447,8	7056,8	7424,6	7566,6	7452,5	7014,0	6310,7	5415,1	4347,7	3869,7	3823,8	3870,7	4114,9	4380,7	3569,2
19.03.2022	3308,8	3546,4	3491,4	3577,5	3561,6	3502,2	3582,1	6312,2	7267,1	8023,9	8543,4	8772,7	8870,2	8790,2	8329,8	7546,5	6475,9	5329,3	4709,5	4699,6	4838,3	5029,6	5274,8	3782,5
20.03.2022	4050,5	4289,8	4293,8	4417,0	4412,6	4364,5	4401,9	6620,4	7636,6	8438,7	9064,2	9290,0	9268,6	9154,2	8646,9	7813,3	6641,9	5414,4	4908,5	4913,1	5111,4	5252,7	5470,0	4362,5
21.03.2022	4210,6	4305,8	4305,4	4473,6	4513,8	4504,1	4502,5	6302,3	7104,2	7925,9	8555,3	8895,5	8908,2	8766,6	8280,9	7512,4	6534,5	5391,3	4793,8	4700,4	4807,9	5107,7	5361,9	4553,1
22.03.2022	4568,8	4829,0	4744,0	4845,0	4826,9	4802,4	4802,4	6937,0	7873,8	8845,1	9467,5	9849,8	9949,2	9733,9	9212,2	8342,1	7256,9	6016,7	5488,3	5334,4	5377,5	5551,5	5766,7	5010,7
23.03.2022	5468,9	5685,3	5596,8	5732,6	5735,8	5676,5	5646,7	7989,2	9076,8	10053,6	10691,5	11086,7	11089,9	10856,8	10304,0	9424,4	8373,8	7052,0	6500,1	6342,4	6395,7	6607,8	6775,5	5645,1
24.03.2022	5248,1	5498,7	5464,0	5623,2	5696,0	5499,8	5403,3	7521,2	8501,2	9325,2	9889,8	10172,2	10213,8	10021,8	9462,2	8662,1	7828,8	6818,6	6350,5	6179,7	6223,0	6422,2	6738,3	5819,4
25.03.2022	6209,1	6434,8	6372,7	6476,0	6451,9	6273,6	6134,9	7945,5	8637,8	9373,6	9863,7	10112,8	10090,5	9947,5	9581,6	8992,1	8269,2	7346,4	6857,9	6657,7	6674,2	6822,0	7041,5	6376,1
26.03.2022	7156,0	7348,2	7414,7	7570,9	7589,1	7625,1	7662,1	9090,2	9981,3	10758,0	11267,2	11490,4	11271,8	10782,8	10042,7	9185,0	8219,4	7777,8	7659,0	7699,2	7896,3	8264,2	8049,3	6479,8
27.03.2022	6895,0	7296,4	7294,5	0,0	7499,3	7528,9	7451,2	8514,8	9365,3	10151,4	10862,6	11442,5	11583,7	11698,9	11502,0	11006,3	10335,2	9475,7	8585,9	7900,4	7576,0	7757,8	8126,4	7638,8
28.03.2022	4266,1	4326,6	4150,8	4155,1	4118,1	4111,0	4124,7	5056,8	5887,9	6952,2	7878,2	8420,8	8687,2	8713,4	8532,9	8095,9	7428,6	6380,8	5222,8	4729,9	4654,7	4886,7	5061,5	4325,6
29.03.2022	1613,7	1785,2	1643,3	1707,0	1630,0	1535,5	1377,2	3301,7	3952,8	4962,8	5469,8	5981,6	6205,3	6128,4	5784,1	5391,2	4755,9	3864,2	3206,8	2700,2	2761,1	3003,6	3291,0	1648,4
30.03.2022	1234,4	1117,9	882,7	829,4	740,6	677,2	520,3	2647,1	2966,4	3649,9	4378,5	4946,7	5282,5	5375,8	5133,3	4789,7	4131,3	3294,2	2502,4	2253,0	2189,0	2407,6	2677,0	623,2
31.03.2022	1076,0	1452,2	1346,0	1407,7	1343,7	1286,4	1210,2	3240,3	3246,4	3552,8	4299,3	4838,2	5164,9	5257,8	5024,8	4602,3	3906,0	3178,3	2549,4	2407,9	2208,5	2341,8	2606,5	744,1

### Intraday market

Дата	1	2	3	4	5	6	7	8	9	10	11	12	13	14	15	16	17	18	19	20	21	22	23	24
01.03.2022	942,5	1200,9	1265,1	1315,6	1365,8	1310,1	873,8	837,6	561,1	409,2	213,1	537,9	626,7	578,3	751,4	928,2	943,1	734	519,4	637,9	892,7	977,1	1266,4	1034,5
02.03.2022	1086,7	1103,9	1033,5	1060,5	1041,5	1040,5	1106,6	1194,8	884,2	642,9	1064,9	1369,3	1545,3	1452,8	1304,5	1322,3	1453	1246,1	1002,9	1044,1	1169,4	986,4	1009,6	1097
03.03.2022	422,2	685,2	568,9	602,9	567,5	610,1	640,4	937,9	595,1	718,1	712,9	1123,6	1213,9	1205,5	943,9	1023,3	1092,4	742,9	459,1	516,8	670,3	847,7	1215,8	905
04.03.2022	1169,1	1305,5	1141,9	1155,7	1132,3	1150,7	1271,8	1353,5	1525,7	1624,5	1527,1	1030,5	616	435,3	488,8	715,4	1192,8	990,9	1005,8	841,4	1306,2	893,4	1039,9	847
05.03.2022	344,9	347,9	369,7	388	387,4	345,7	300,7	674,6	625,9	656,3	796,7	861,7	854,4	829,1	715,4	625,1	554,7	532,2	610,8	596	704,7	762,9	984,2	508
06.03.2022	1716,1	2038,7	1910,1	1940,6	1925,1	1903	1997,4	2309,9	2491,2	2612,6	2706,9	2754,7	2745,2	2773,7	2576,1	2464,2	2452,8	2409,6	2250	2313,3	2341,8	2450,2	2517,9	2068,6
07.03.2022	1690,7	2101,8	1954,3	1968,7	1941,3	1889,7	1954,8	2172,6	2321,1	2350,5	2373,4	2366,8	2384,8	2378	2387,3	2307,5	2323,9	2252,1	2192,3	2193	2215,8	2328,7	2448,8	1966,3
08.03.2022	1740	1845,9	1724,1	1751,2	1702,1	1768,3	1805,1	2109,9	1996,6	2073,5	2164,8	2202,6	2221,7	2205,2	2181,1	2088,8	2065,6	1957,1	1921,9	1909	1953,8	1980,7	2117,1	1873,3
09.03.2022	1836	1881,9	1729,4	1756,7	1755	1820,9	1948,7	2052,6	1950,3	1918,3	1958,9	1977,9	2024,5	2031,7	2128,9	2003,7	1934,2	1850,3	1831,5	1811,8	1834,8	1955,8	2030,5	1946,6
10.03.2022	1981,8	2006,1	1956,4	1987	2025,4	1976,7	2038,9	2152,6	1945,6	1953,3	2000,4	2248,9	2213,5	2219,2	2186,7	2129,4	2190	2110,8	2107,3	2184,8	2006,1	2331,9	2237,7	1982,7
11.03.2022	1369,6	1419,8	1180,3	1196	1192,6	1283,4	1263,9	1416,4	1341,9	1388,2	1508,1	1519,1	1575,5	1671,8	1594,7	1630,1	1472,9	1454,9	1275	1133,6	1166,9	135		

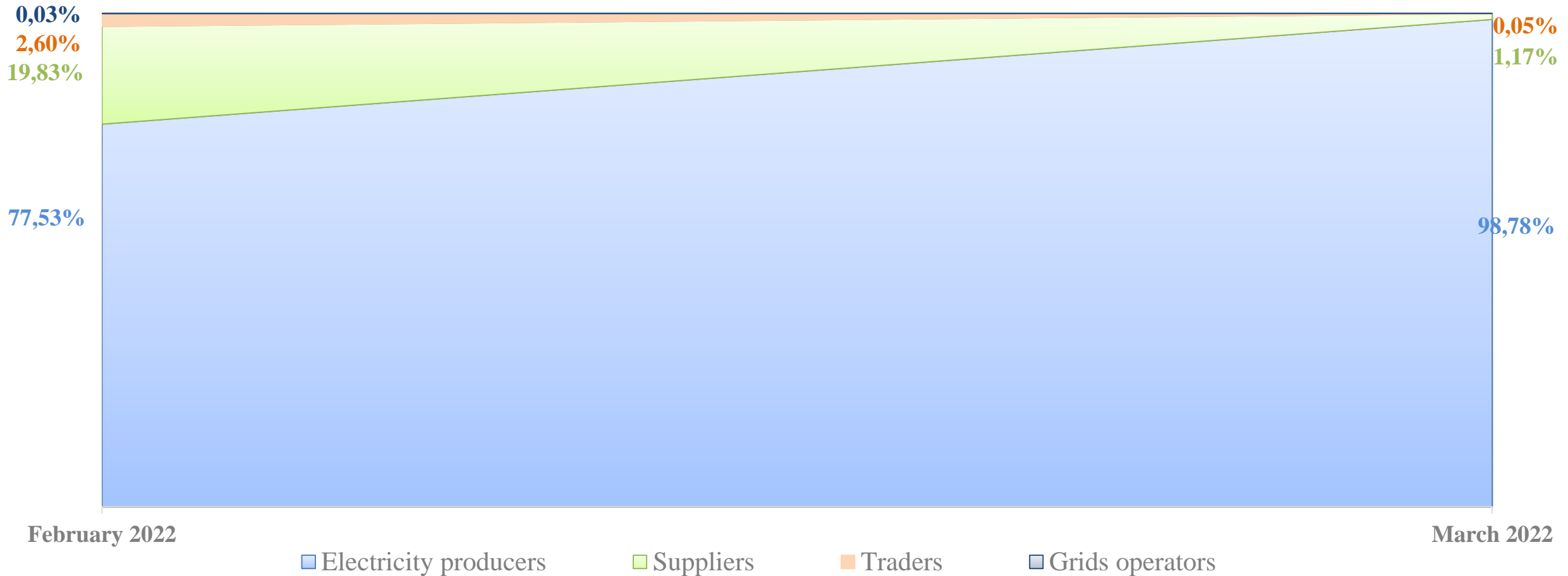
# Orders.

## DAM volumes of sale orders with ranking by the price in March 2022, MWh



# Orders.

## Comparison of the structure of DAM sale orders

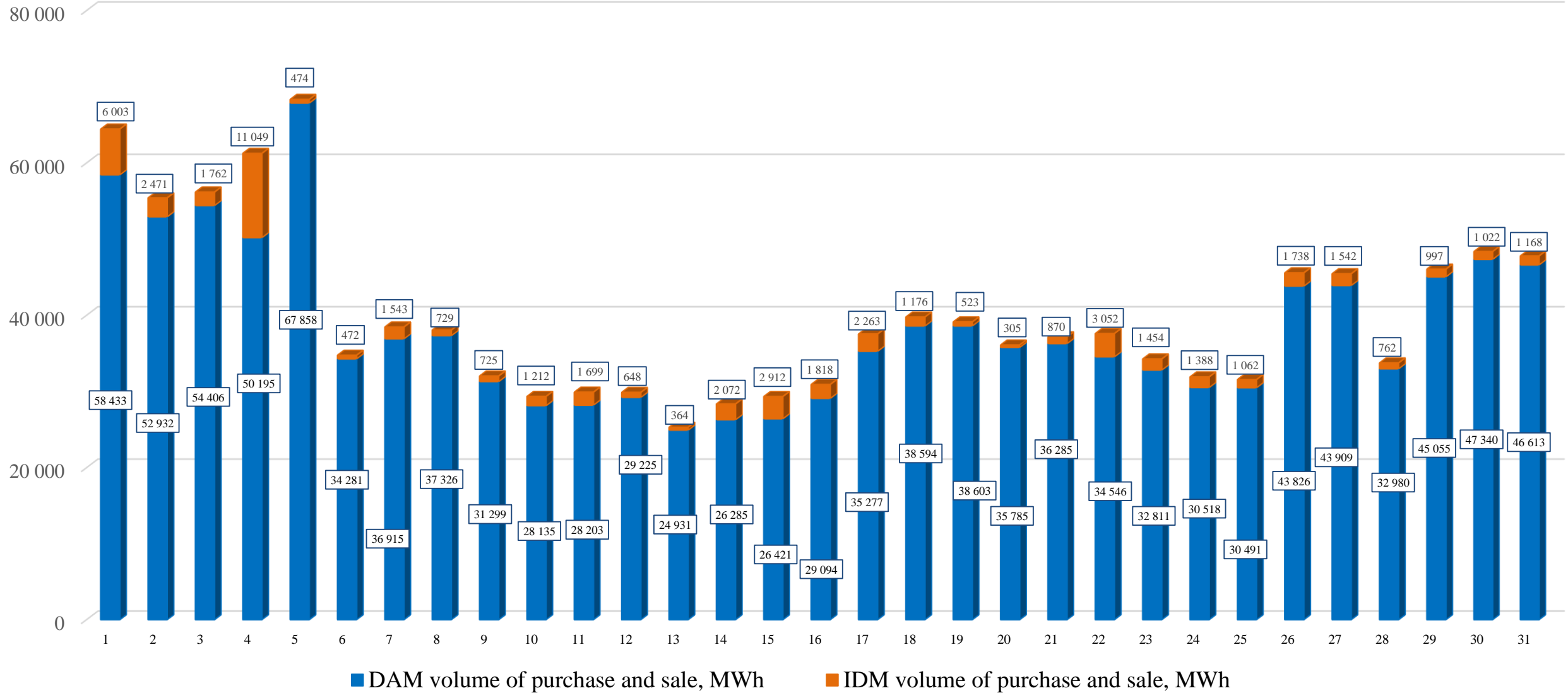


\* Declared sale volumes by the Guaranteed Buyer are taken into account in the declared sale volumes by producers.

\*\*The amount of interest may differ from 100% due to rounding to 2 decimal places.

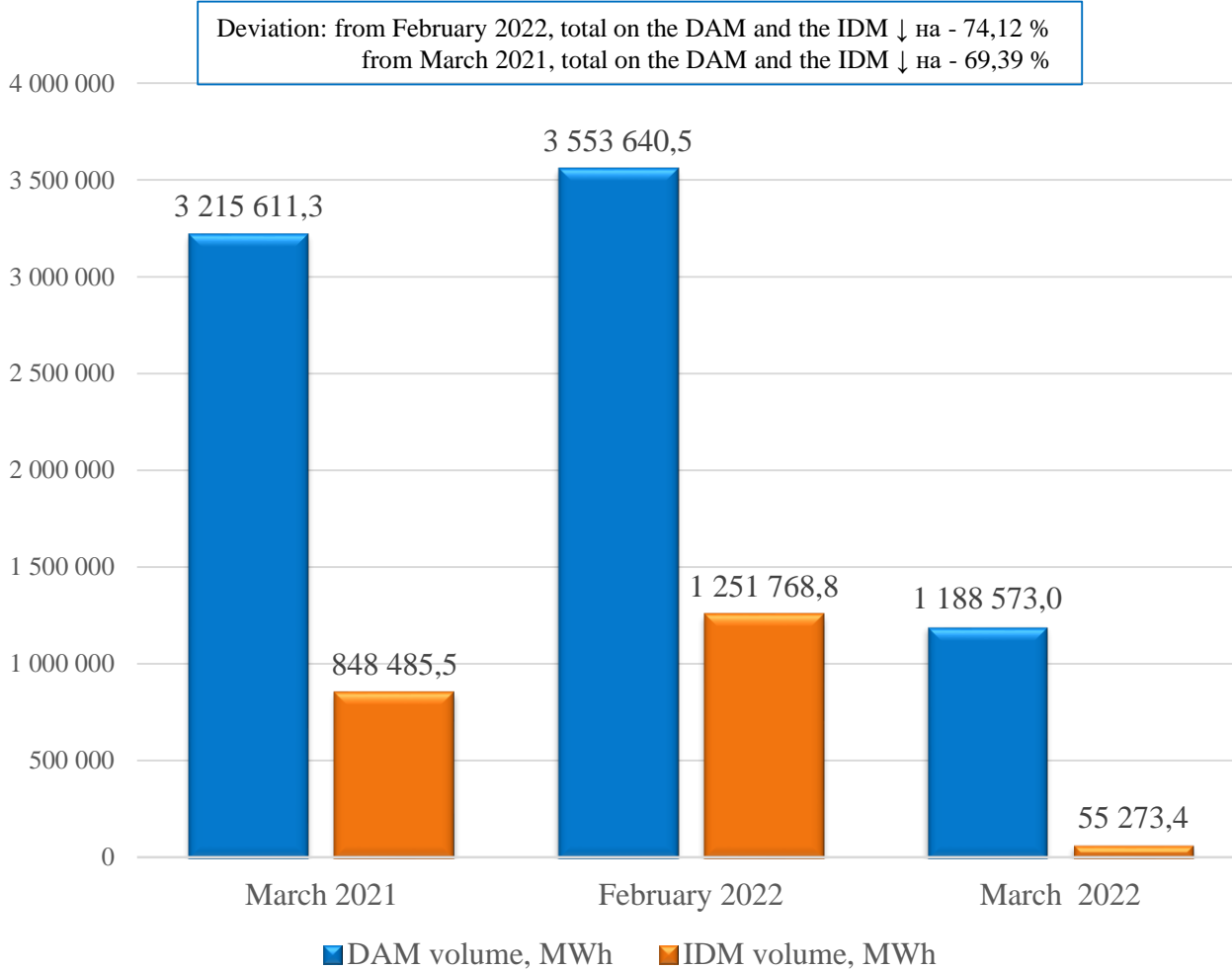


# Volume of trades in March 2022

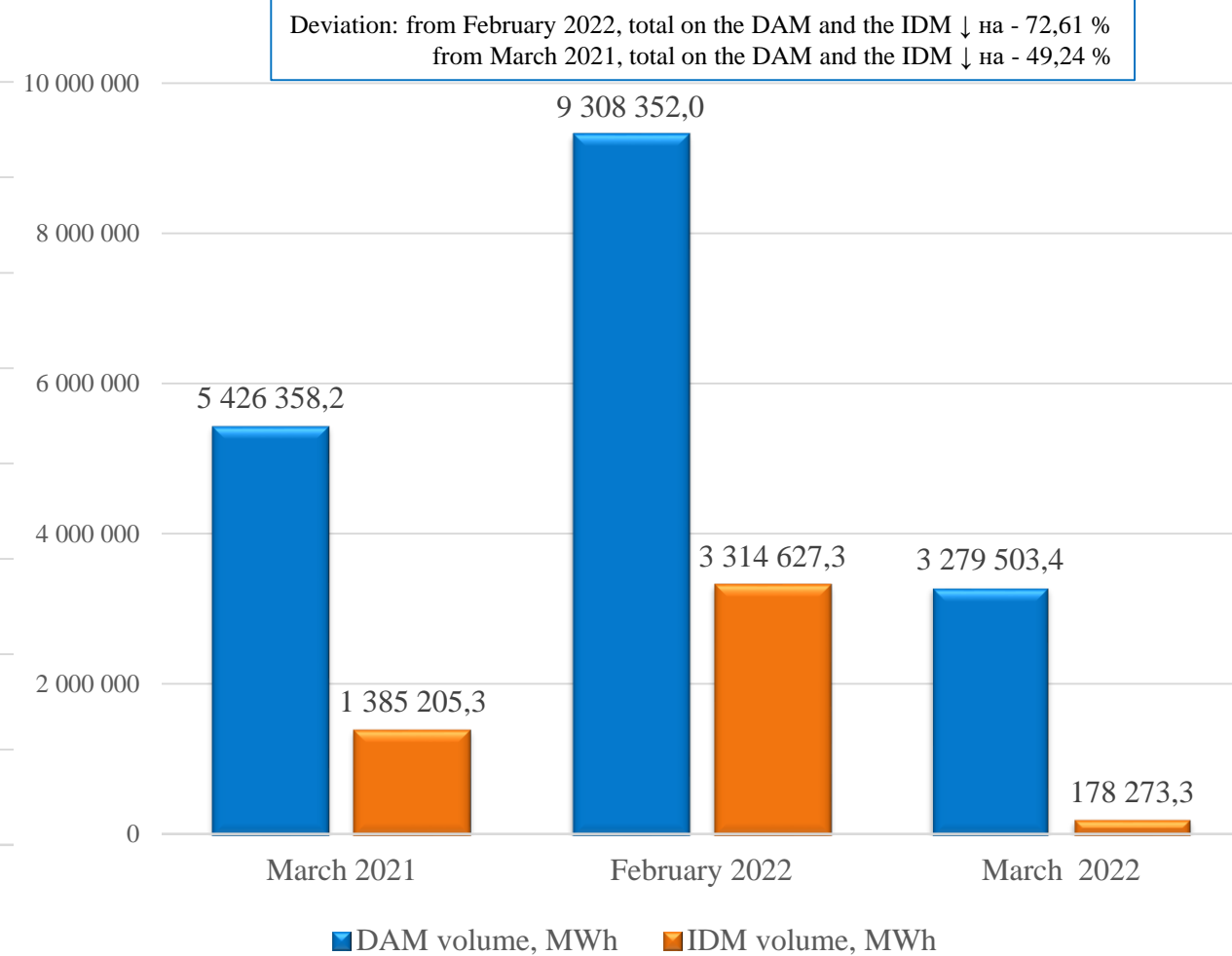


# Comparison of volume and cost of electricity purchase and sale for March 2022, February 2022 and March 2021

## Volume of trades



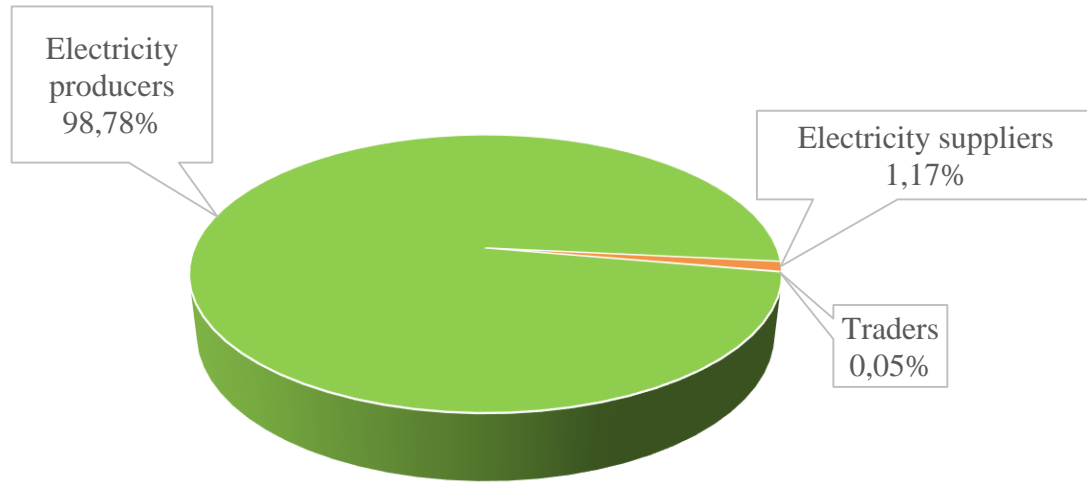
## Cost



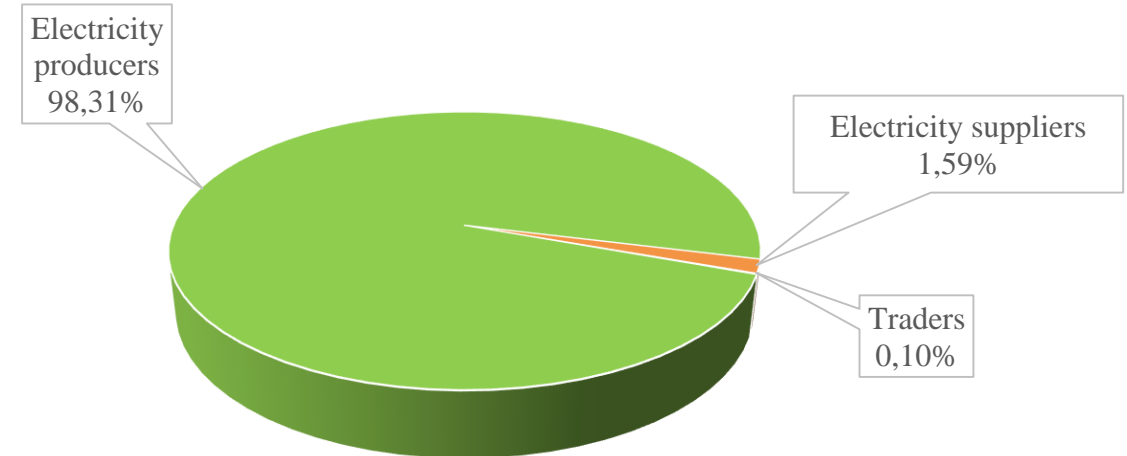
# Structure of DAM and IDM sale volumes for March 2022 by activity types,%

## Day-ahead market

### Declared volumes

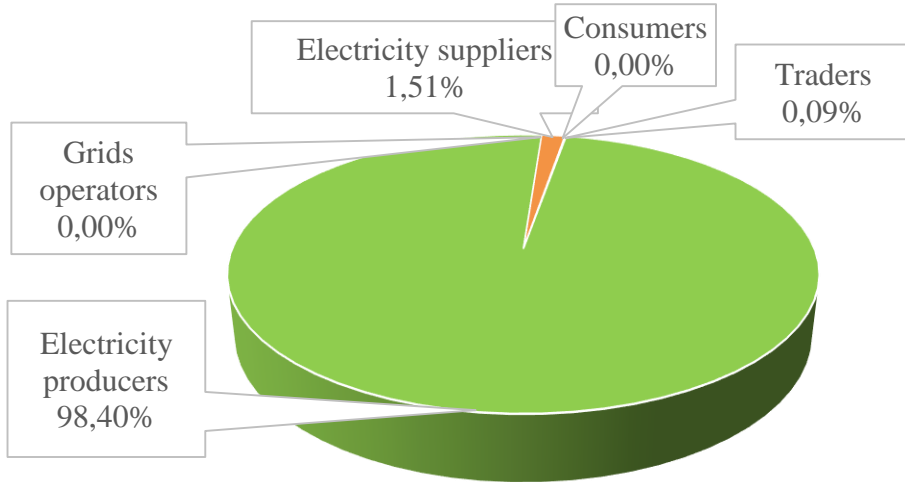


### Accepted volumes

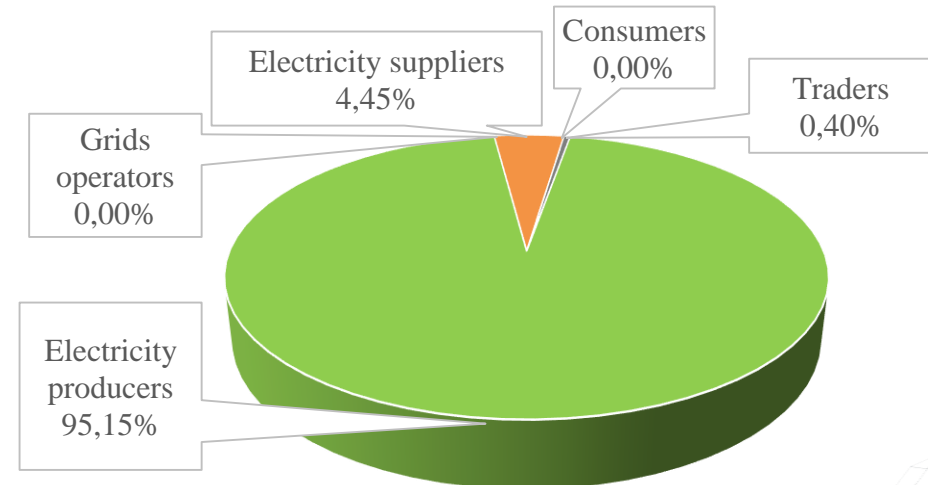


## Intraday market

### Declared volumes



### Accepted volumes

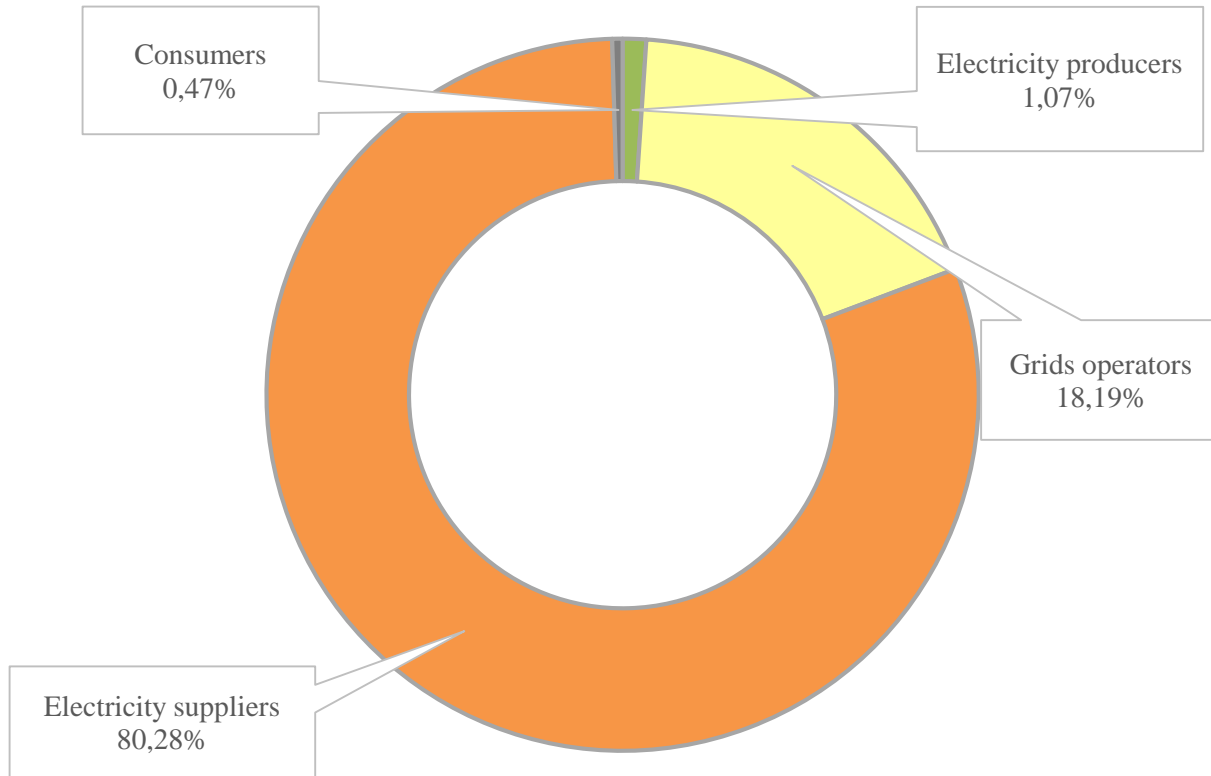


\*Sale volumes by the Guaranteed Buyer are taken into account in sale volumes by producers.

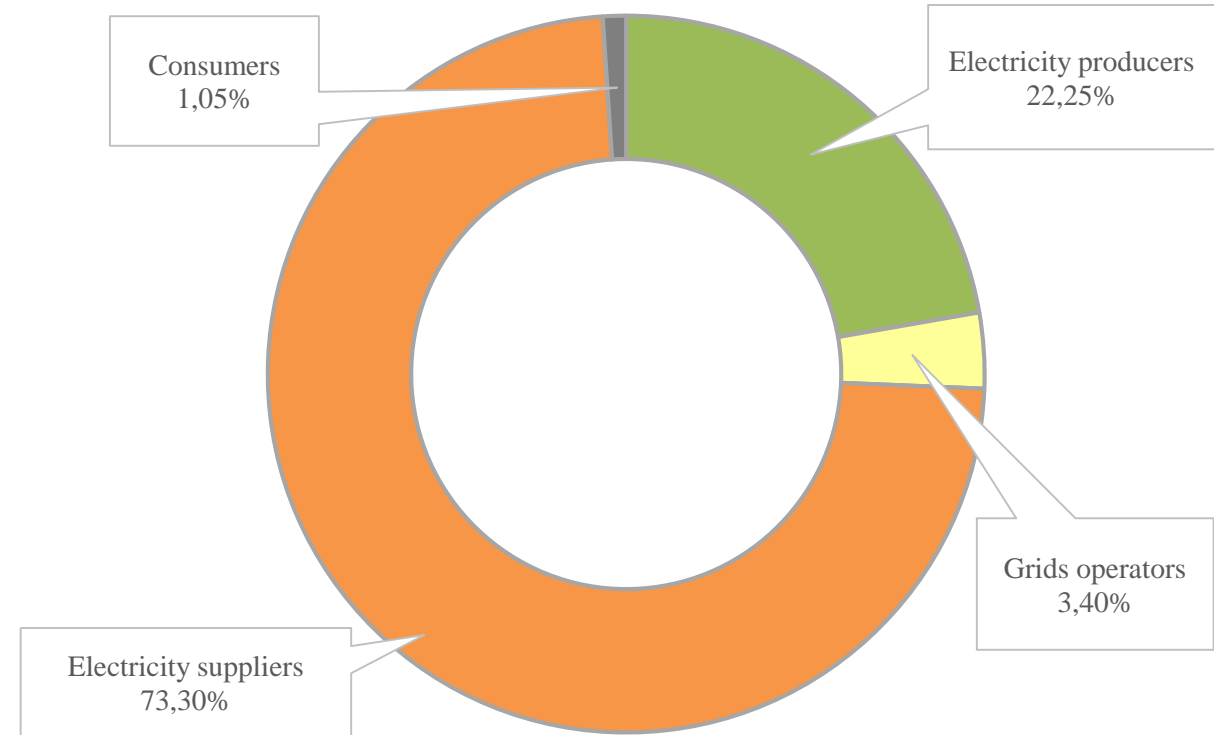
\*\*The amount of interest may differ from 100% due to rounding to 2 decimal places.

# Structure of DAM and IDM purchase volumes in March 2022 by activity types,%

## Day-ahead market



## Intraday market

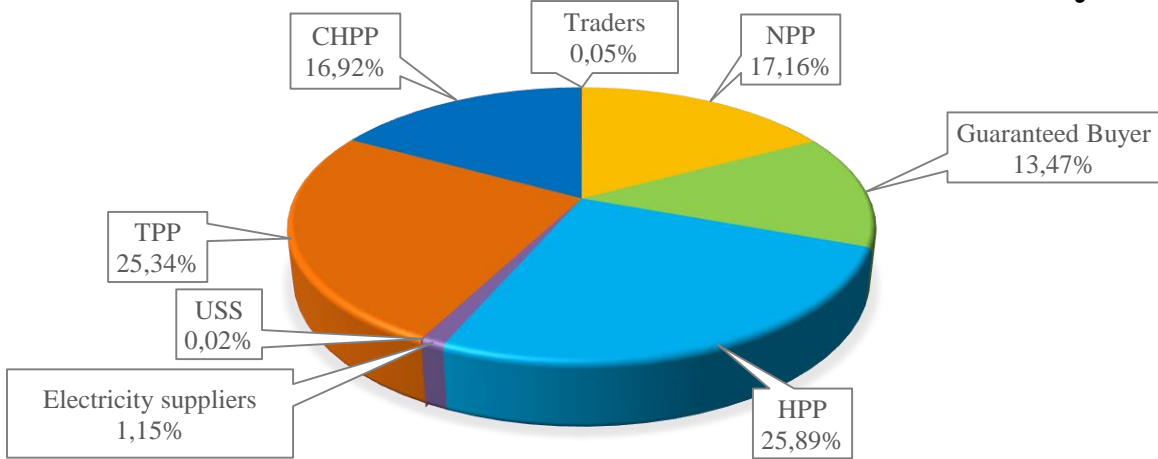


\* Purchase volumes by the Guaranteed Buyer are taken into account in purchase volumes by electricity suppliers.

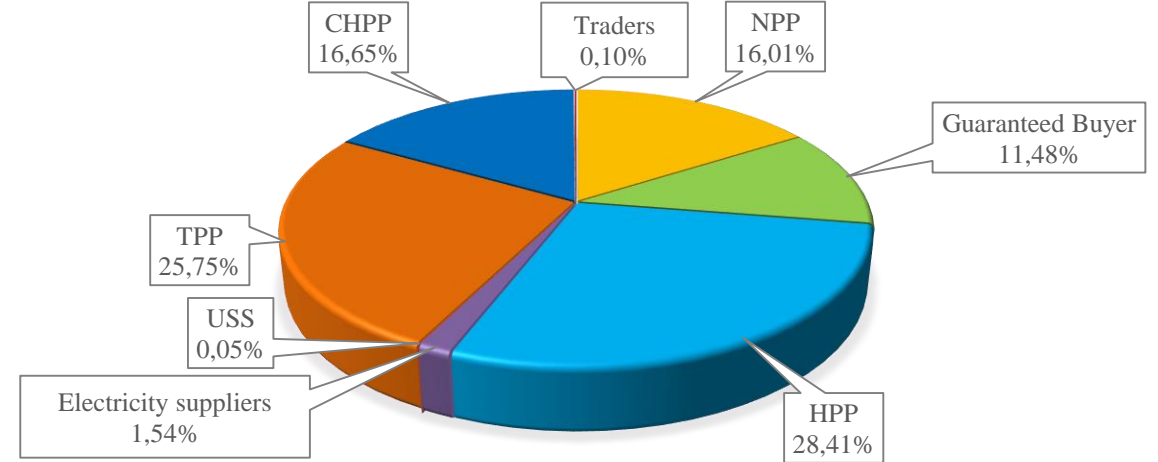
\*\* The amount of interest may differ from 100% due to rounding to 2 decimal places.

# Structure of DAM and IDM sale volumes by types of activity and categories of producers in March 2022, % Day-ahead market

DECLARED VOLUMES

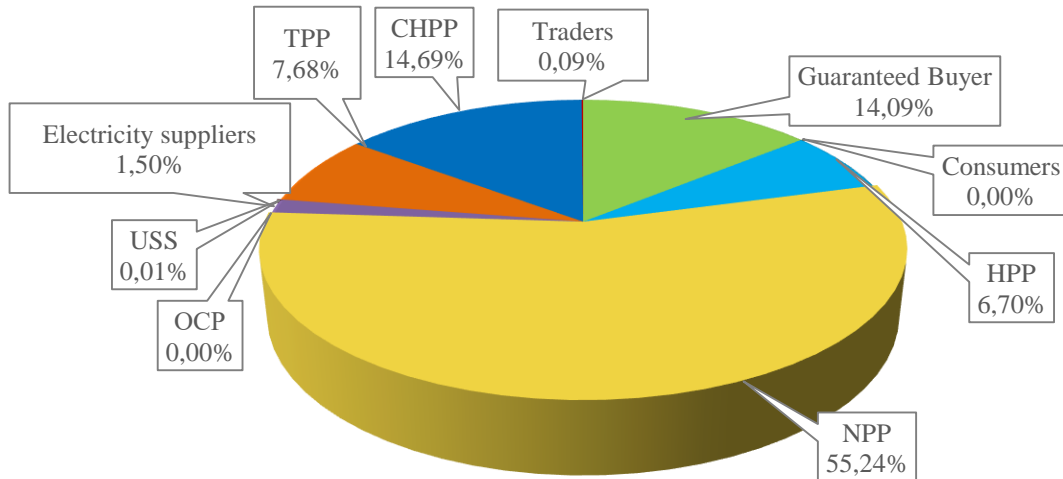


ACCEPTED VOLUMES

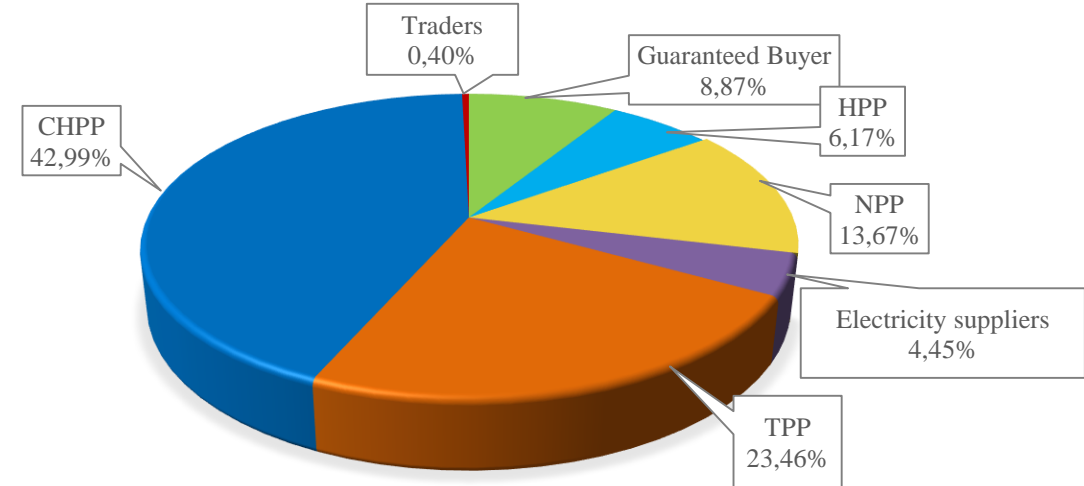


## Intraday market

DECLARED VOLUMES



ACCEPTED VOLUMES

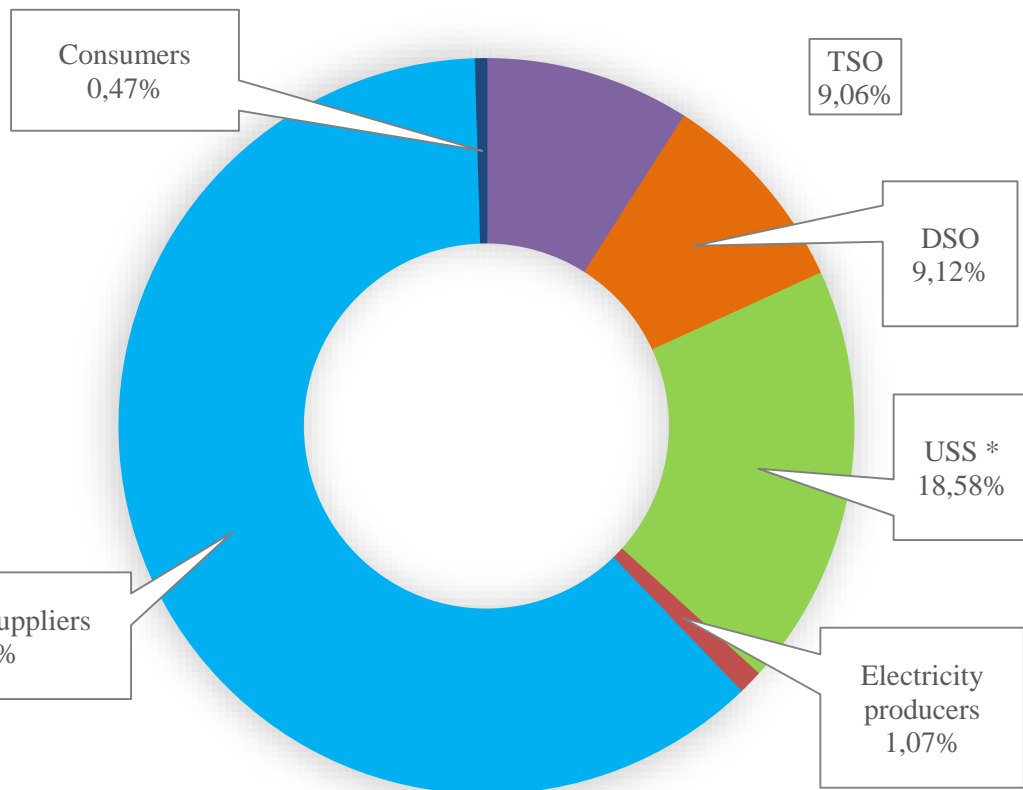


The structure of volumes by categories of electricity producers is shown tentatively, since the market participants are economic entities, not individual generating units, and when buying and selling electricity on the DAM/IDM, the fixing of release/selection points of the corresponding volume of electricity does not occur. Under such conditions, JSC Market Operator does not know the origin of electricity sold on the DAM and IDM.

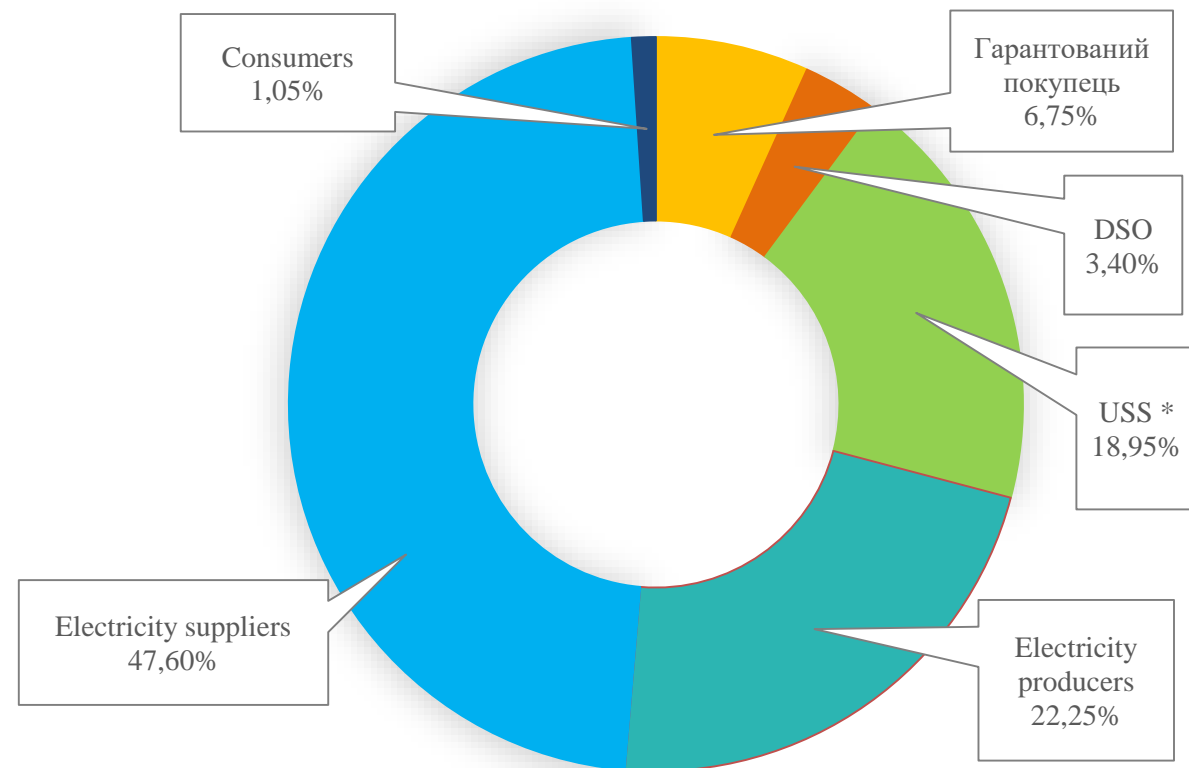
\*The amount of interest may differ from 100% due to rounding to 2 decimal places.

# Structure of DAM and IDM purchase volumes in March 2022, %

## Day-ahead market



## Intraday market



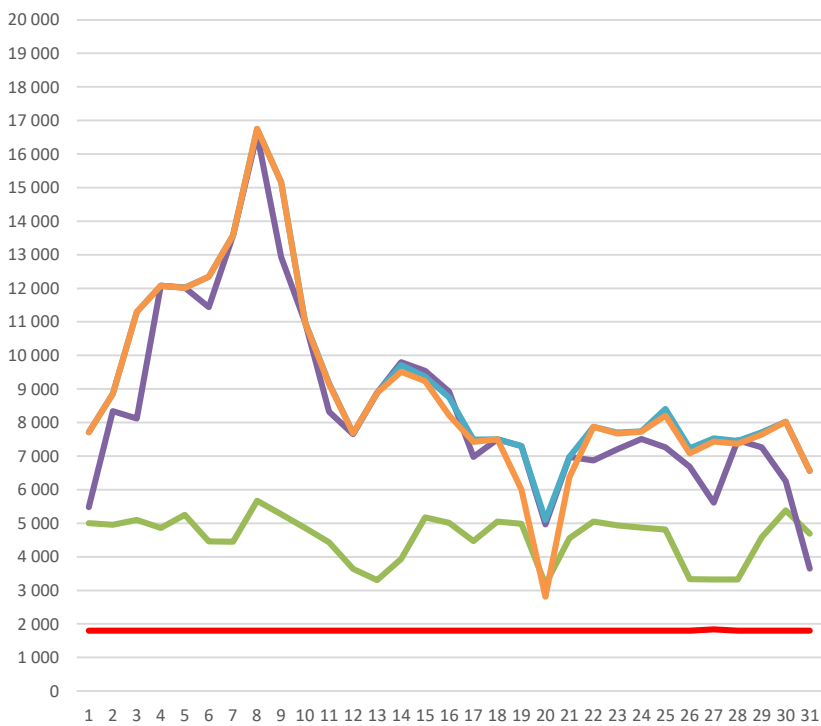
\*Universal Service Suppliers, among other things, also conduct electricity purchase operations as a supplier.

\*\* The amount of interest may differ from 100% due to rounding to 2 decimal places.

# DAM price indices.

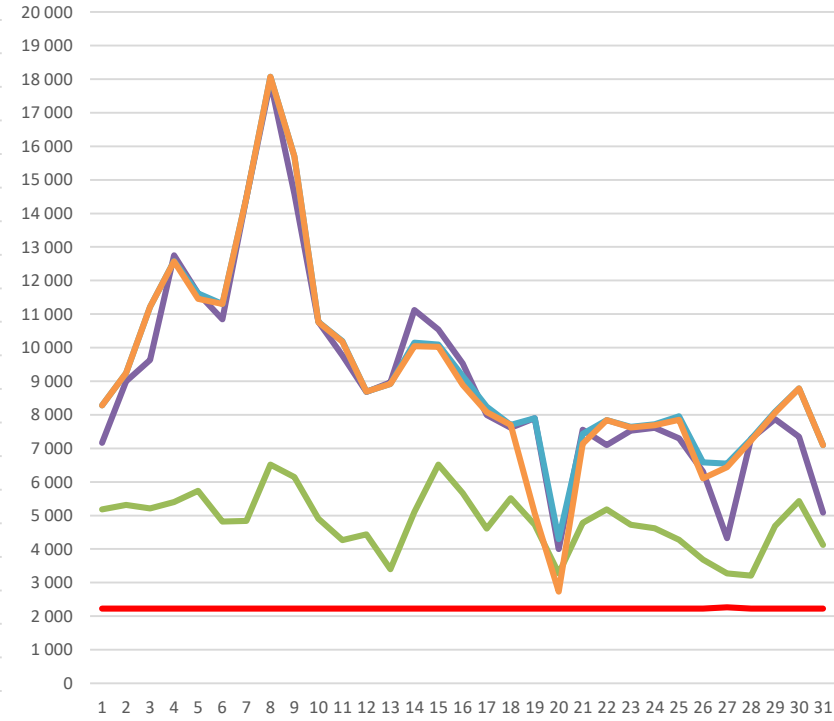
## Comparison with price indices of European countries for March 2022, UAH / MWh

### Off-peak period



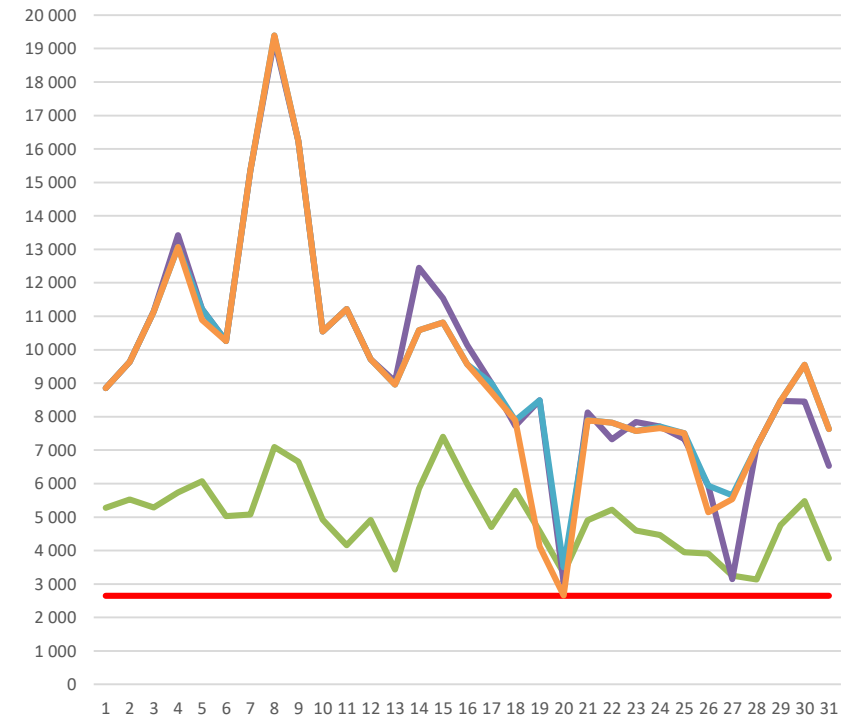
— Ukraine, IPS    — Poland    — Romania  
— Hungary    — Slovakia

### Base period



— Ukraine, IPS    — Poland    — Romania  
— Hungary    — Slovakia

### Peak period



— Ukraine, IPS    — Poland    — Romania  
— Hungary    — Slovakia

# Prices. Comparison with prices in Europe for March 2022

IPS	DAM		Comparison with other countries							
		IPS	PL	IPS/PL	RO	IPS/RO	HU	IPS/HU	SK	IPS/SK
Prices:										
BASE	UAH/MWh	2 225,01	4 824,09	▼ -53,9%	9 038,01	▼ -75,4%	9 405,34	▼ -76,3%	9 202,65	▼ -75,8%
PEAK	UAH/MWh	2 646,25	4 975,58	▼ -46,8%	9 556,95	▼ -72,3%	9 621,50	▼ -72,5%	9 404,06	▼ -71,9%
OFFPEAK	UAH/MWh	1 802,64	4 577,58	▼ -60,6%	8 522,56	▼ -78,8%	9 191,76	▼ -80,4%	9 003,97	▼ -80,0%

The DAM average prices in the IPS of Ukraine for March 2022 remain lower than the corresponding figures of neighboring countries by 53,9%-76,3%.

	IDM		Comparison with other countries			
		IPS	SK	IPS/SK	CZ	IPS/CZ
Price:						
Weighted average	UAH/MWh	2 687,75	9 663,47	▼ -72,2%	8 717,97	▼ -69,2%

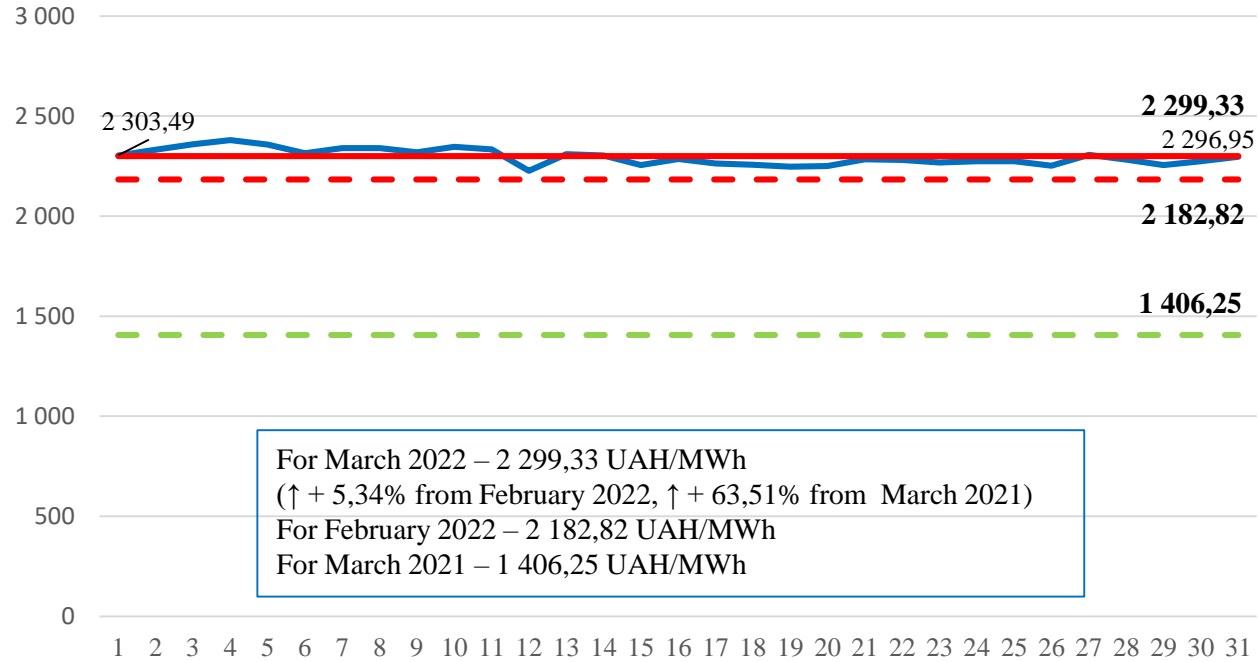
The IDM weighted average prices in the IPS of Ukraine for March 2022 are lower than the corresponding figures of European countries by 69,2%-72,2%.



# Prices.

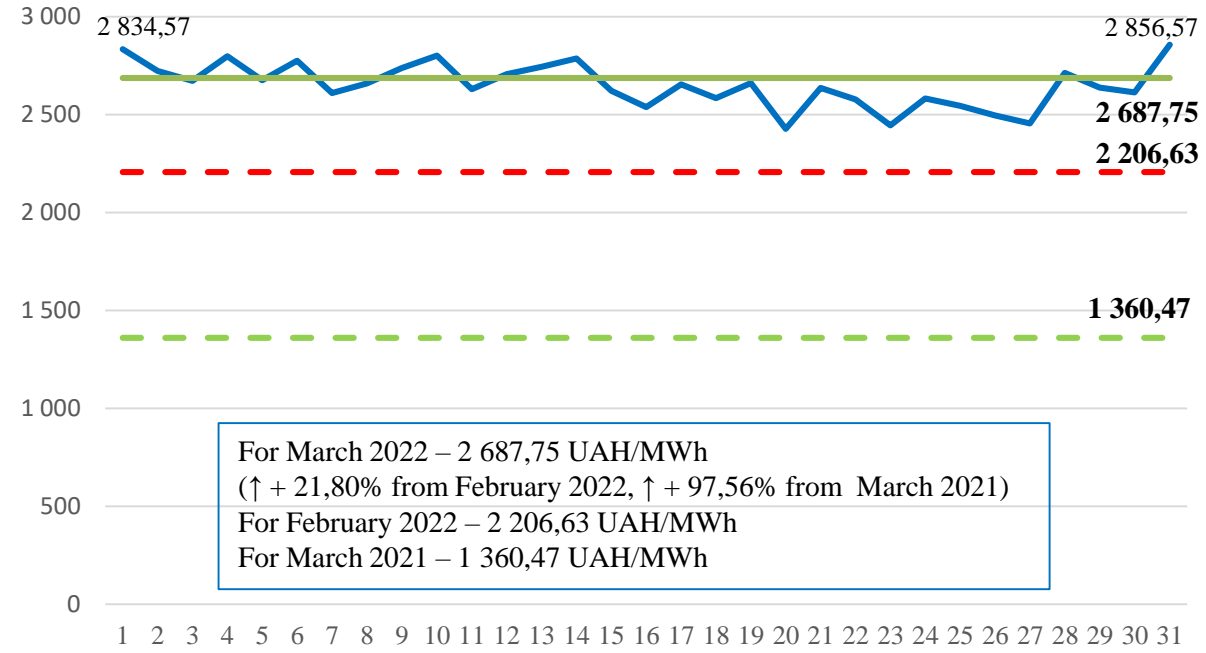
## Weighted average prices of electricity purchase and sale

### Day-ahead market



- DAM weighted average price, UAH/MWh
- DAM weighted average price for March 2022, UAH/MWh
- - DAM weighted average price for February 2022, UAH/MWh
- - DAM weighted average price for March 2021, UAH/MWh

### Intraday market



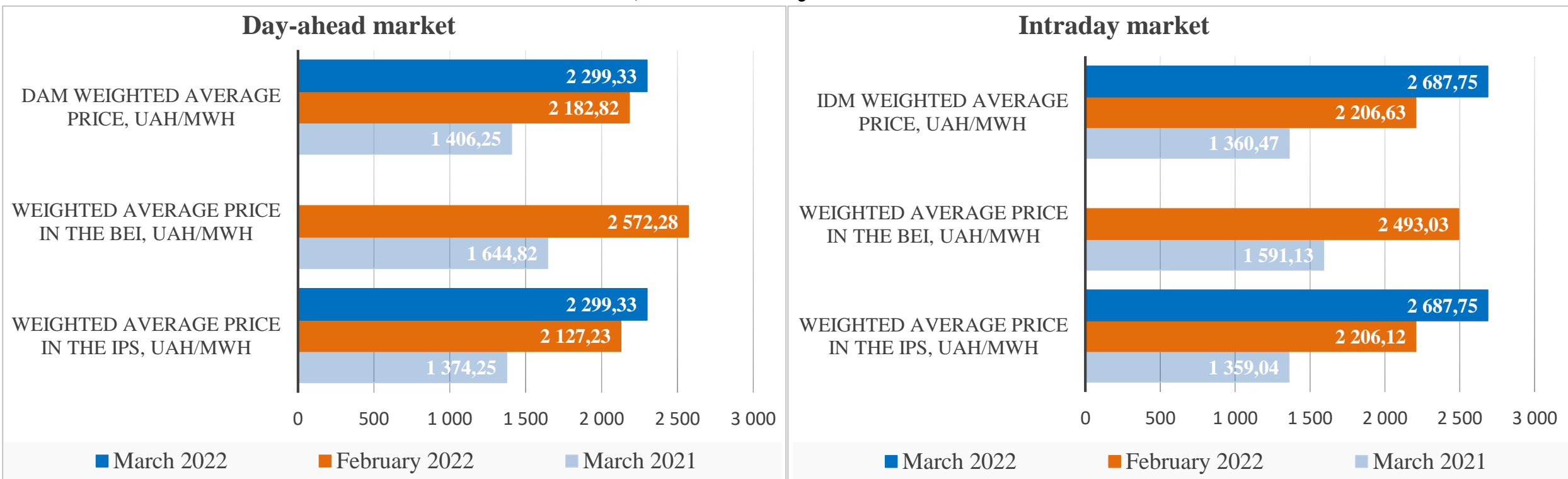
- IDM weighted average price, UAH/MWh
- IDM weighted average price for March 2022, UAH/MWh
- - IDM weighted average price for February 2022, UAH/MWh
- - IDM weighted average price for March 2021, UAH/MWh

\* - All prices are net of VAT

# Decade analysis of DAM and IDM weighted average prices for March 2022

Indicator	March 1 decade (01.03-10.03)	March 2 decade (11.03-20.03)	Change,%	March 3 decade (21.03-31.03)	Change,%
DAM weighted average price, UAH/MWh	2 340,51	2 270,18	↓ - 3,00%	2 276,94	↑ + 0,30%
IDM weighted average price, UAH/MWh	2 772,29	2 643,38	↓ - 4,65%	2 579,89	↓ - 2,40%

## Comparison of DAM and IDM weighted average prices for March 2022, February 2022 and March 2021

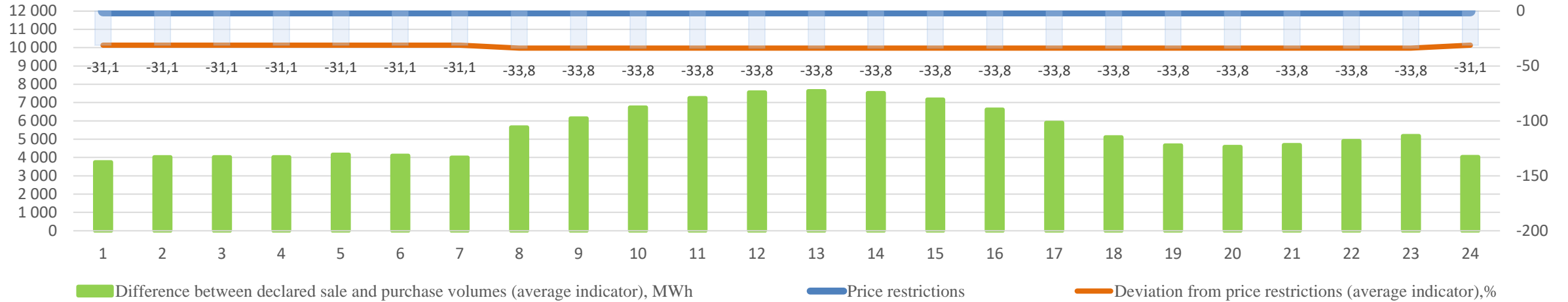


\* - All prices are net of VAT

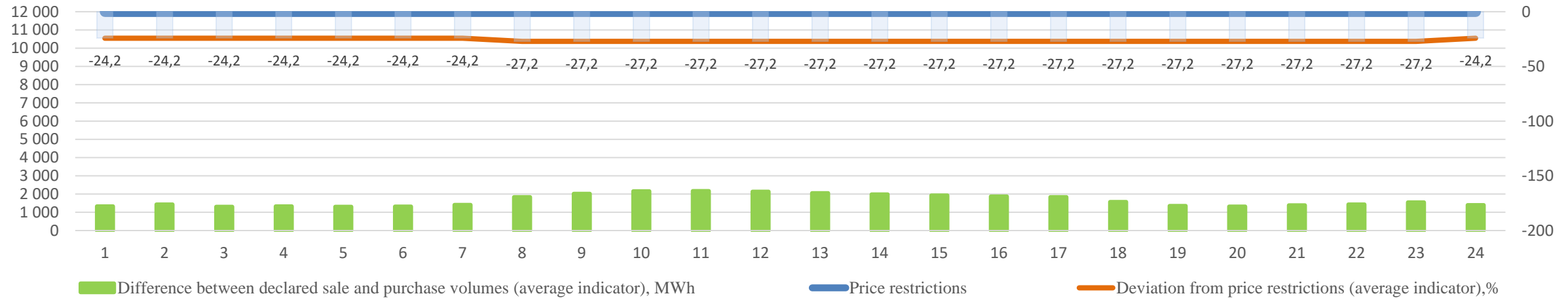
# Prices.

## Deviation of average hourly prices from price restrictions in March 2022

### Deviation of average hourly prices from price restrictions on the DAM

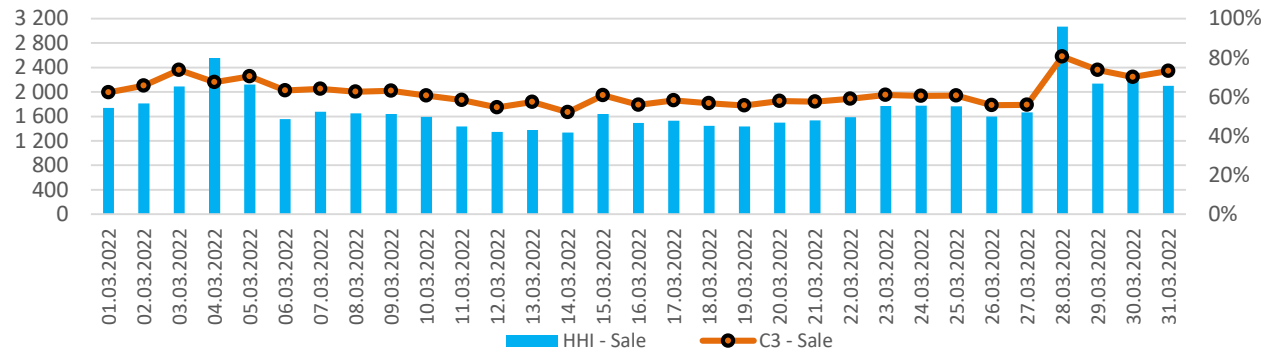


### Deviation of average hourly prices from price restrictions on the IDM

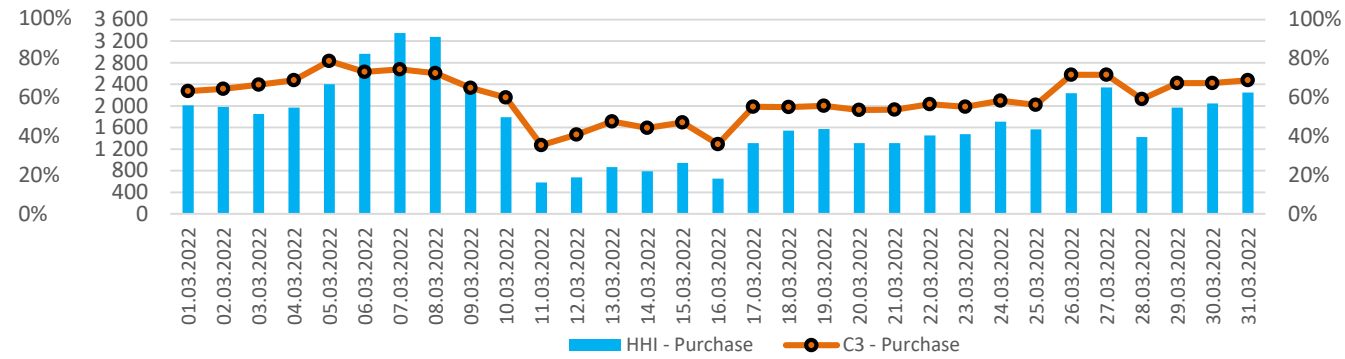


# Herfindahl-Hirschman Index (HHI) and Market Concentration Ratio (C3)

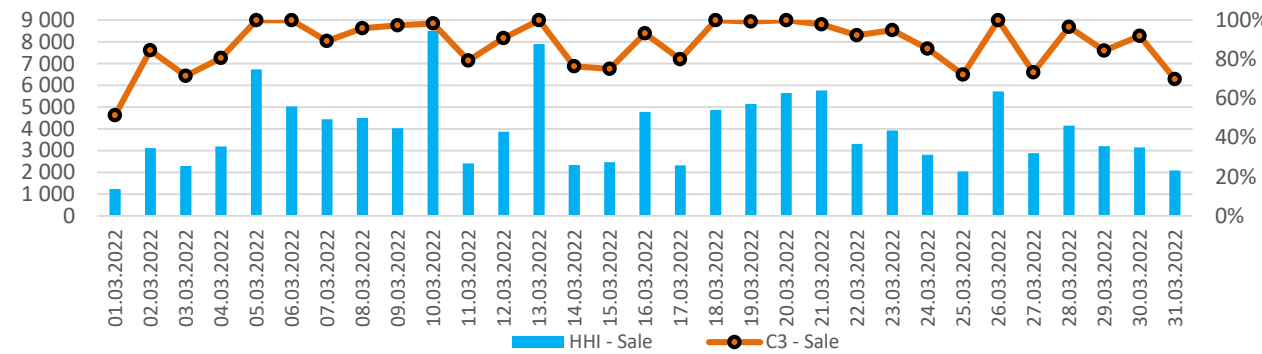
Market concentration indices (DAM sale)



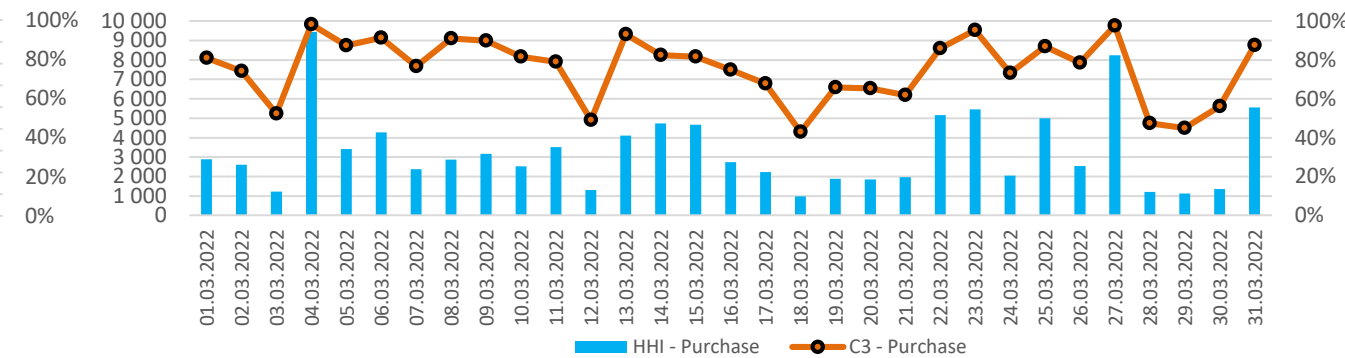
Market concentration indices (DAM purchase)



Market concentration indices (IDM sale)



Market concentration indices (IDM purchase)



Indicator	Concentration		
	Low	Average	High
Market Concentration Index (C3)	less 45 %	45% - 70%	70% - 100%
Herfindahl-Hirschman Index (HHI)	less 1 000	1 000 – 1 800	1 800

**The Herfindahl-Hirschman Index (HHI)** is the sum of the market share squares of the participants during the purchase/sale transactions. Competition reacts to the share of each market participant during the analysis takes place. The higher the Herfindahl-Hirschman index is (higher concentration), the weaker the competition in the market.

**The Market Concentration Ratio (C3)** represents the percentage of the market share of the top three participants with the highest purchase/sale volumes. The higher the indicator is, the higher market concentration and the weaker the competition are.

# Share in the volume of purchase and sale of the three largest DAM and IDM participants

## Day-ahead market



## Intraday market

